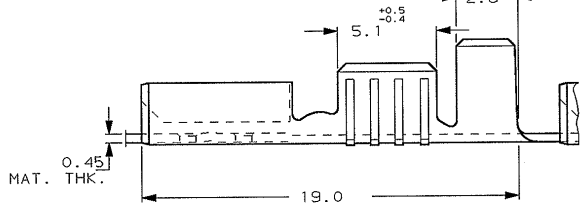
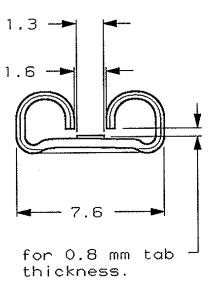
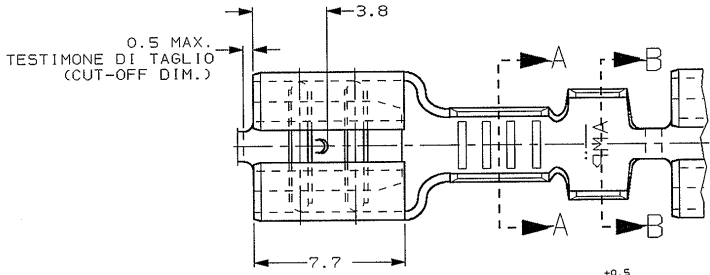


1 2 3 4 5 6 7 8

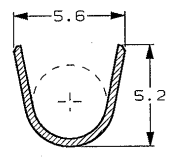
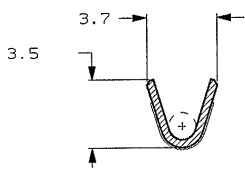
SCALA NON IMPERATIVA (DO NOT SCALE)
 DIMENSIONI IN mm
METRIC
 THIRD ANGLE PROJECTION



- 1) STATO DI FORNITURA - SCALA 1:1 (SUPPLY CONDITION - SCALE 1:1)
 SENSO DI USCITA DEL TERMINALE DALLA BOBINA (DIRECTION OFF TOP OF REEL)
-
- 2) SPECIFICA DI PRODOTTO 108-20019 (PRODUCT SPEC. 108-20019)
 3) PER LE VERSIONI IN PEZZI SCIOLTI VEDERE DISEGNO 160563 & 160742 (FOR LOOSE PIECE VERSION SEE DRAWING 160563 & 160742).

SEZIONE A-A
(SECTION A-A)

SEZIONE B-B
(SECTION B-B)



STAGNATO (TIN PLATED)	BRONZO FOSF (PHOS. BRONZE)	6-160465-1	AH
STAGNATO (TIN PLATED)	OTTONE (BRASS)	6-160465-0	AH
NUDO (UNPLATED)	OTTONE (BRASS)	5-160465-1	AH
FINITURA / COLORE (FINISH / COLOUR)	MATERIALE (MATERIAL)	NUMERO (AMP P/N)	REV
CUSTOMER DWG. FOR REFERENCE ONLY		DISEGNO PER CLIENTE SOLO PER RIFERIMENTO	
THIS DRAWING IS UNPUBLISHED		RELEASE FOR PUBLICATION 19	
© COPYRIGHT IS BY AMP INCORPORATED, MORRISBURG PA. ALL INTERNATIONAL RIGHT RESERVED. AMP PRODUCTS MAY BE COVERED BY U.S. AND FOREIGN PATENT AND/OR PATENT PENDING.			
TOLLERANZE: SE NON DIVERSAMENTE SPECIFICATO (TOLERANCES: UNLESS OTHERWISE SPECIFIED)		DIAM. ISOLANTE (INS. DIA. RANGE)	RANGO FILO (WIRE RANGE) mm2
± 0.4		3.0-4.3	0.75-1.50
ANGOLI (ANGLES)		SCALA (SCALE) 5:1	
± 2°		AMP AMP ITALIA S.p.A. Corso F.lli Cervi, 15 COLLENO (TORINO)	
AJ3	CORRECT MATERIAL - TRINITE	HY	2006 DIS.
AJ2	REVISED ET00-0033-05	H.Y	2006 DIS. 03 AUG 2000
AJ1	REVISED ET00-0033-01	H.Y	2006 DIS. 03 AUG 2000
AJ	OBSOLETE PARTS & REDRAWN ET00-0034-00	H.Y	2006 DIS. 03 AUG 2000
REV.	REVISION (REVISION RECORD)	DIS.	DATE
		APP.	DATE
		APP.	DATE
DESCRIZIONE (DESCRIPTION)		LOC. SIZE (LOC. NO)	REV. (REV.)
FASTON® Connector, .250" sr. REC. CONTACT.		I A3	C-160465
		AJ3	1 of 1

DISTRIBUZIONE
PRINT DIST.