

4

3

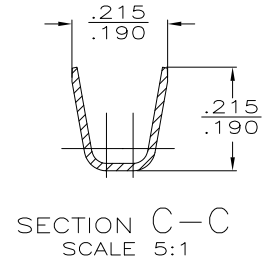
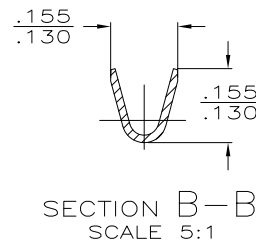
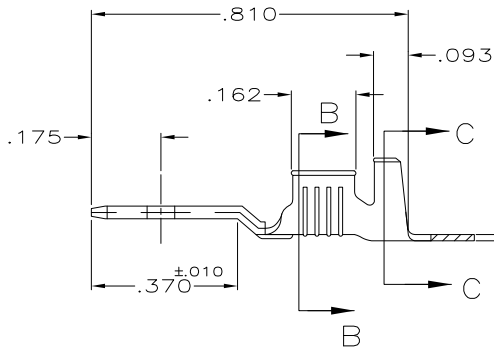
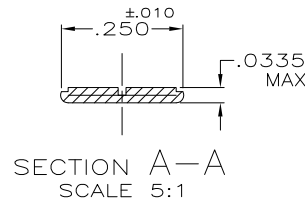
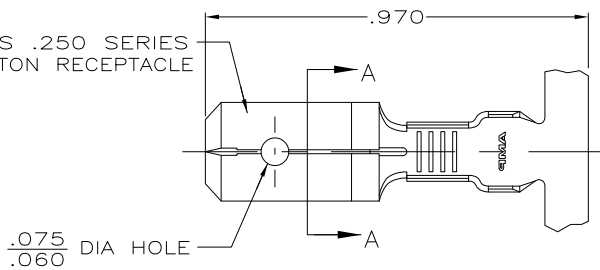
2

1

THIS DRAWING IS UNPUBLISHED. RELEASED FOR PUBLICATION
 © COPYRIGHT - By - ALL RIGHTS RESERVED.

LOC	DIST	REVISIONS			
P	LTR	DESCRIPTION	DATE	DWN	APVD
AF	50	U1	REVISED PER ECO-11-004820	11MAR11	RK HMR

FITS .250 SERIES FASTON RECEPTACLE



1. CONTINUOUS STRIP ON REELS.
2. FEED TO BE .540# .005.
- 3 REVERSED REEL OF 42474-1.
- 4 REVERSED REEL OF 42474-2.
- 5 FOREIGN PRODUCTION ONLY.
- 6 LUBRICANT APPLIED AFTER TIN PLATING.

FINISH	INSULATION RANGE	WIRE SIZE	PART NO
4 TIN	.110-.150 DIA	18-14 AWG	42474-7
5 -			42474-6
5 SILVER .000120 MIN			42474-5
4 TIN			42474-4
3 -			42474-3
3 TIN			42474-2
5 -			42474-1

THIS DRAWING IS A CONTROLLED DOCUMENT.

DIMENSIONS: INCHES	TOLERANCES UNLESS OTHERWISE SPECIFIED:	DWN: JR RUTH 1/31/91	CHK: MS FEHER 1/31/91	TE Connectivity	
0 PLC ± -	1 PLC ± -	APVD: C MEYERS 1/31/91	NAME	TAB, FASTON™ .250 SERIES	
2 PLC ± -	3 PLC ± .015	PRODUCT SPEC	SIZE	CAGE CODE	DRAWING NO
4 PLC ± -	4 PLC ANGLES ± -	APPLICATION SPEC	A3	00779	C-42474
MATERIAL: NO 2H BRASS	FINISH: SEE TABLE	WEIGHT	CUSTOMER DRAWING		RESTRICTED TO
			SCALE: 4:1	SHEET: 1 OF 1	REV: U1