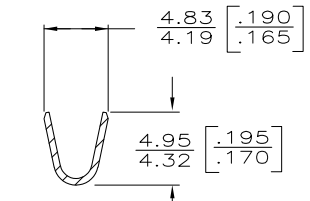
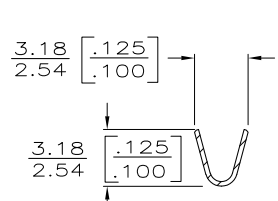
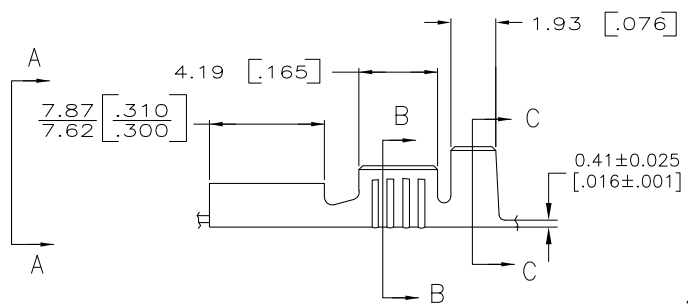
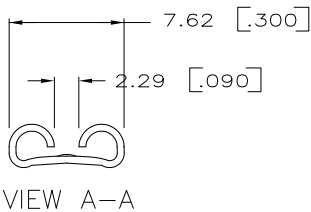
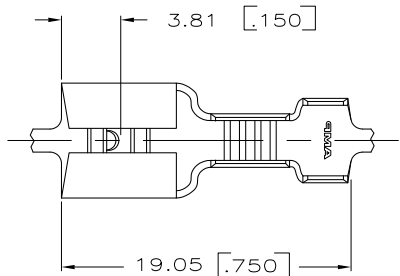


THIS DRAWING IS UNPUBLISHED. RELEASED FOR PUBLICATION
 © COPYRIGHT - By - ALL RIGHTS RESERVED.

LOC	DIST	REVISIONS					
AF	50	P	LTR	DESCRIPTION	DATE	DWN	APVD
		U1		REVISED PER ECO-11-004917	11MAR11	RK	HMR

1- DIM'S IN BRACKETS ARE IN INCHES.
 2- CONTINUOUS STRIP ON REELS.
 3- FOR FOREIGN PRODUCTION ONLY



3	2.29-3.30 [.090-.130]	0.3-0.8mm [22-18]	0.81 ±0.025 [.032] ±0.01	41771-1
	2.29-3.30 [.090-.130]	0.3-0.8mm ² [22-18]	0.81 ±0.025 [.032] ±0.01	41771
	INSUL RANGE	WIRE SIZE	TAB THK.	PART NO.

F OR O	3.30 [130]	5.59 [220]	F	2.29 [090]	1.42 [056]	0.8mm [18]
					1.30 [051]	0.5mm [20]
					1.24 [049]	0.3mm [22]
TYPE	WIDTH	STRIP LENGTH ±0.38 ±0.15	TYPE	WIDTH	±.051 [±.002]	WIRE HEIGHT
INSUL BARREL CRIMP			WIRE BARREL CRIMP			

THIS DRAWING IS A CONTROLLED DOCUMENT.		DWN	2/7/86	
		CHK	2/7/86	
		APD	2/7/86	
		NAME	-	
		PRODUCT SPEC	-	
		APPLICATION SPEC	-	
		WEIGHT	-	
CUSTOMER DRAWING		SCALE	4:1	SHEET 1 of 1
		REV	U1	



RECEPTACLE, FASTON,
6.35 [250] SERIES

SIZE	CAGE CODE	DRAWING NO	RESTRICTED TO
A3	00779	C=41771	-