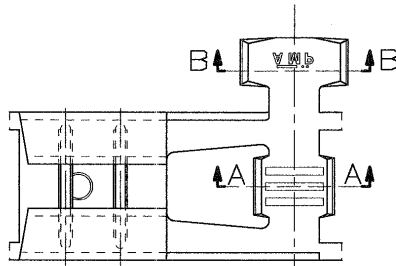
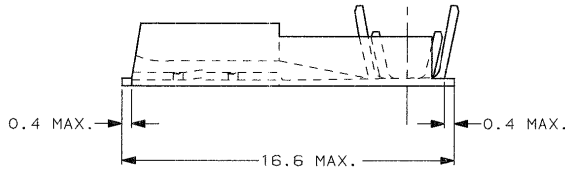
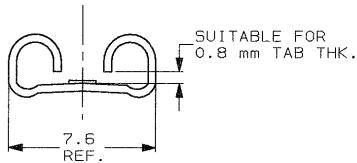


SCALA NON IMPEGNATIVA
(DO NOT SCALE)
DIMENSIONI IN
DIMENSIONS IN mm

METRIC

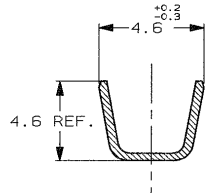
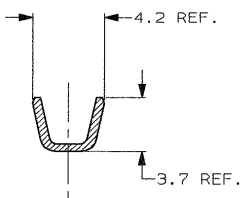


- 1) PER LA VERSIONE IN NASTRO
VEDERE DISEGNO 180388.
(FOR STRIP FORM VERSION SEE DRAWING 180388).
- 2) CONFEZIONAMENTO IN ACCORDO
ALLA SPECIFICA AMP 107-20201.
(PACKAGE ACCORDING TO AMP SPEC. 107-20201).



SECTION A-A

SECTION B-B



STAGNATO (TIN PLATED)	OTTONE (BRASS)	0-180430-2	L
NUDO (UNPLATED)	OTTONE (BRASS)	0-180430-1	L
FINITURA / COLORE (FINISH / COLOUR)	MATERIALE (MATERIAL)	NUMERO (AMP P/N)	REV

CUSTOMER DWG.
FOR REFERENCE ONLY

DISEGNO PER CLIENTE
SOLO PER RIFERIMENTO

-THIS DRAWING IS UNPUBLISHED-		RELEASE FOR PUBLICATION		19
© COPYRIGHT 19 BY AMP INCORPORATED, HARRISBURG, PA. ALL INTERNATIONAL RIGHTS RESERVED. AMP PRODUCTS MAY BE COVERED BY U.S. AND FOREIGN PATENT AND/OR PATENT PENDING				
TOLLERANZE - SE NON DIVERSAMENTE SPECIFICATO (TOLERANCES, UNLESS OTHERWISE SPECIFIED)	DIAM. ISOLANTE (INS. DIA. RANGE)	RANGO FILO (WIRE RANGE)	SCALA (SCALE)	
± 0.3	2.0-3.3	0.5-1.5	5:1	
ANGOLI (ANGLES)	± 2°			
DIS. 21 JUN 2001 (COR.) H. YAALI		DESCRIZIONE (DESCRIPTION) FASTON® Connector, .250" FLAG REC. CONTACT (LOOSE PIECE VERSION)		
CONT. 21 JUN 2001 (COR.) C. TARTARI		AMP ITALIA S.p.A. Corso F.lli Cervi, 15 COLLEGGIO (TORINO)		
L	OBSOLETE PARTS & REDRAWN ETOC-0151-01	LOC. SIZE NUMBER (DWG NO)	REV.	FOLIO (SHEET)
REV.	REVISIONI (REVISION RECORD)	I A3	C-180430	L 1 OF 1

REVISIONI (REVISION RECORD)