



STP16CPPS05

Low voltage 16-bit constant current LED sink driver with auto power-saving

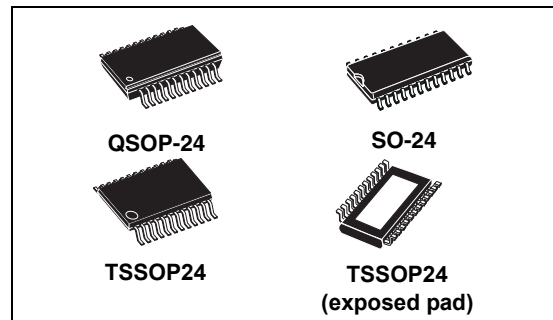
Preliminary data

Features

- Low voltage power supply down to 3 V
- 16 constant current output channels
- Adjustable output current through external resistor
- Serial data IN/parallel data OUT
- Auto power-saving
- 3.3 V MCU-driving capability
- Output current: 3 to 40 mA
- 30 MHz clock frequency
- Available in high thermal efficiency TSSOP exposed pad
- ESD protection: 2 kV HBM, 200 V MM

Description

The STP16CPPS05 is a monolithic, low voltage, low current power 16-bit shift register designed for LED panel displays. The device features a 16-bit serial-in, parallel-out shift register that feeds a 16-bit D-type storage register. In the output stage, sixteen regulated current sources are designed to provide 3 to 40 mA of constant current to drive the LEDs.



The STP16CPPS05 output current can be adjusted through an external resistor to control the light intensity of the LEDs. LED brightness is adjustable from 0% to 100% via the \overline{OE} pin.

The auto power-shutdown and auto power-ON feature allows the device to save power with no external intervention.

The STP16CPPS05 guarantees a 20 V output driving capability, allowing users to connect more LEDs in series. The high 30 MHz clock frequency makes the device suitable for high data rate transmission. The 3.3 V supply is well suited for applications which interface a 3.3 V MCU. Compared to a standard TSSOP package, the TSSOP with exposed pad increases heat dissipation capability by a factor of 2.5

Table 1. Device summary

| Order codes | Package | Packaging |
|-----------------|---------------------|---------------------|
| STP16CPPS05MTR | SO-24 | 1000 parts per reel |
| STP16CPPS05TTR | TSSOP24 | 2500 parts per reel |
| STP16CPPS05XTTR | TSSOP24 exposed pad | 2500 parts per reel |
| STP16CPPS05PTR | QSOP-24 | 2500 parts per reel |

Contents

| | | |
|----------|---|-----------|
| 1 | Summary description | 3 |
| | 1.1 Pin connection and description | 3 |
| 2 | Electrical ratings | 5 |
| | 2.1 Absolute maximum ratings | 5 |
| | 2.2 Thermal data | 5 |
| | 2.3 Recommended operating conditions | 6 |
| 3 | Electrical characteristics | 7 |
| 4 | Equivalent circuit and outputs | 9 |
| 5 | Timing diagrams | 11 |
| 6 | Typical characteristics | 14 |
| | 6.1 Auto power-saving | 18 |
| 7 | Package mechanical data | 20 |
| 8 | Revision history | 28 |

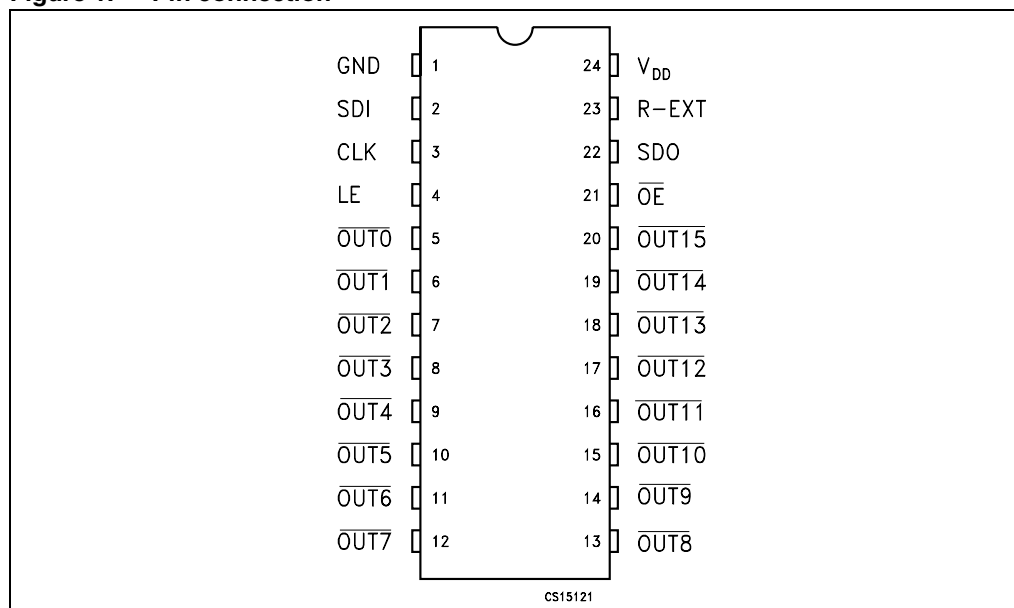
1 Summary description

Table 2. Typical current accuracy

| Output voltage | Current accuracy | | Output current | V _{DD} | Temperature |
|----------------|------------------|-------------|----------------|-----------------|-------------|
| | Between bits | Between ICs | | | |
| ≥ 1.3 V | ± 1% | ± 2% | 5 to 40 mA | 3.3 V to 5 V | 25 °C |

1.1 Pin connection and description

Figure 1. Pin connection



Note: The exposed pad should be electrically connected to a metal land electrically isolated or connected to ground.

Table 3. Pin description

| Pin n° | Symbol | Name and function |
|--------|-------------------------------|--|
| 1 | GND | Ground terminal |
| 2 | SDI | Serial data input terminal |
| 3 | CLK | Clock input terminal |
| 4 | LE | Latch input terminal - detect mode 1 (see operation principle) |
| 5-20 | $\overline{\text{OUT}}\ 0-15$ | Output terminal |
| 21 | $\overline{\text{OE}}$ | Input terminal of output enable (active low) - detect mode 1 (see operation principle) |
| 22 | SDO | Serial data out terminal |
| 23 | R-EXT | Input terminal for an external resistor for constant current programming |
| 24 | V _{DD} | Supply voltage terminal |

2 Electrical ratings

2.1 Absolute maximum ratings

Stressing the device above the ratings listed in the “absolute maximum ratings” table may cause permanent damage to the device. These are stress ratings only and operation of the device at these or any other condition above those indicated in the operating sections of this specification is not implied. Exposure to absolute maximum rating conditions for extended periods may affect device reliability.

Table 4. Absolute maximum ratings

| Symbol | Parameter | Value | Unit |
|-----------|---|------------------|------|
| V_{DD} | Supply voltage | 0 to 7 | V |
| V_O | Output voltage | -0.5 to 20 | V |
| I_O | Output current | 50 | mA |
| V_I | Input voltage | -0.4 to V_{DD} | V |
| I_{GND} | GND terminal current | 800 | mA |
| f_{CLK} | Clock frequency | 50 | MHz |
| T_J | Junction temperature range ⁽¹⁾ | -40 to +170 | °C |

1. Such absolute value is based on the thermal shutdown protection.

2.2 Thermal data

Table 5. Thermal data

| Symbol | Parameter | Value | Unit | |
|-------------|--|---------------------------------------|------|------|
| T_A | Operating free-air temperature range | -40 to +125 | °C | |
| T_{J-OPR} | Operating thermal junction temperature range | -40 to +150 | °C | |
| T_{STG} | Storage temperature range | -55 to +150 | °C | |
| R_{thJA} | Thermal resistance junction-ambient ⁽¹⁾ | SO-24 | 42.7 | °C/W |
| | | TSSOP24 | 55 | °C/W |
| | | TSSOP24 ⁽²⁾ Exposed Pad | 37.5 | °C/W |
| | | QSOP-24 | 55 | °C/W |

1. According with JEDEC standard 51-7B

2. The exposed pad should be soldered directly to the PCB to obtain the thermal benefits.

2.3 Recommended operating conditions

Table 6. Recommended operating conditions

| Symbol | Parameter | Test conditions | Min. | Typ. | Max. | Unit |
|----------------|-----------------------------|--|----------------------------------|------|--------------|------|
| V_{DD} | Supply voltage | | 3.0 | | 5.5 | V |
| V_O | Output voltage | | | | 20 | V |
| I_O | Output current | OUTn | 3 | | 40 | mA |
| I_{OH} | Output current | SERIAL-OUT | | | +1 | mA |
| I_{OL} | Output current | SERIAL-OUT | | | -1 | mA |
| V_{IH} | Input voltage | | $0.7 V_{DD}$ | | V_{DD} | V |
| V_{IL} | Input voltage | | -0.3 | | $0.3 V_{DD}$ | V |
| t_{wLAT} | LE pulse width | $V_{DD} = 3.0 \text{ V to } 5.0 \text{ V}$ | 20 | | | ns |
| t_{wCLK} | CLK pulse width | | 10 | | | ns |
| t_{wEN} | \overline{OE} pulse width | | 100 | | | ns |
| $t_{SETUP(D)}$ | Setup time for DATA | | 8 | | | ns |
| $t_{HOLD(D)}$ | Hold time for DATA | | 5 | | | ns |
| $t_{SETUP(L)}$ | Setup time for LATCH | | 8 | | | ns |
| f_{CLK} | Clock frequency | | Cascade operation ⁽¹⁾ | | | 30 |

1. If the device is connected in cascade, it may not be possible to achieve the maximum data transfer. Please consider the timings carefully.

3 Electrical characteristics

$V_{DD} = 3.3 \text{ V to } 5 \text{ V}$, $T_A = 25 \text{ }^\circ\text{C}$, unless otherwise specified.

Table 7. Electrical characteristics

| Symbol | Parameter | Test conditions | Min. | Typ. | Max. | Unit |
|------------------|--|---|----------------------|-----------|--------------|------------------|
| V_{IH} | Input voltage high level | | $0.7 V_{DD}$ | | V_{DD} | V |
| V_{IL} | Input voltage low level | | GND | | $0.3 V_{DD}$ | V |
| I_{OH} | Output leakage current | $V_{OH} = 20 \text{ V}$ | | | 1 | μA |
| V_{OL} | Output voltage (serial-OUT) | $I_{OL} = 1 \text{ mA}$ | | | 0.4 | V |
| V_{OH} | Output voltage (serial-OUT) | $I_{OH} = -1 \text{ mA}$ | $V_{DD}-0.4\text{V}$ | | | V |
| I_{OL1} | Output current | $V_O = 0.3 \text{ V}$, $R_{ext} = 4 \text{ k}\Omega$ | 4.75 | 5 | 5.25 | mA |
| I_{OL2} | | $V_O = 0.3 \text{ V}$, $R_{ext} = 1 \text{ k}\Omega$ | 19 | 20 | 21 | |
| I_{OL3} | | $V_O = 1.3 \text{ V}$, $R_{ext} = 497 \Omega$ | 38 | 40 | 42 | |
| ΔI_{OL1} | Output current error between bit (All output ON) | $V_O = 0.3 \text{ V}$, $I_O = 5 \text{ mA}$ $R_{EXT} = 4 \text{ k}\Omega$ | | ± 1 | ± 5 | % |
| ΔI_{OL2} | | $V_O = 0.3 \text{ V}$, $I_O = 20 \text{ mA}$ $R_{EXT} = 980 \Omega$ | | ± 0.5 | ± 3 | |
| ΔI_{OL3} | | $V_O = 1.3 \text{ V}$, $I_O = 40 \text{ mA}$ $R_{EXT} = 490 \Omega$ | | ± 0.5 | ± 3 | |
| $R_{SIN(up)}$ | Pull-up resistor | | 150 | 300 | 600 | $\text{k}\Omega$ |
| $R_{SIN(down)}$ | Pull-down resistor | | 100 | 200 | 400 | $\text{k}\Omega$ |
| $I_{DD(OFF1)}$ | Supply current (OFF) | $R_{EXT} = 1 \text{ k}\Omega$, $I_{OUT} = 20 \text{ mA}$, OUT 0 to 15 = OFF | | 5.4 | 7.5 | mA |
| $I_{DD(OFF2)}$ | | $R_{EXT} = 497 \Omega$, $I_{OUT} = 40 \text{ mA}$ OUT 0 to 15 = OFF | | 8.0 | 9.5 | |
| $I_{DD(ON1)}$ | Supply current (ON) | $R_{EXT} = 1 \text{ k}\Omega$, $I_{OUT} = 20 \text{ mA}$, OUT 0 to 15 = ON | | 5.5 | 7.5 | |
| $I_{DD(ON2)}$ | | $R_{EXT} = 497 \Omega$, $I_{OUT} = 40 \text{ mA}$ OUT 0 to 15 = ON | | 8.1 | 9.5 | |
| $I_{DD(SH)}$ | Shut-down current all latched data = L | $V_{DD} = 3.3\text{V}$ | | 160 | 200 | μA |
| | | $V_{DD} = 5\text{V}$ | | 190 | 240 | μA |
| Thermal | Thermal protection | | | 170 | | $^\circ\text{C}$ |

$V_{DD} = 3.3\text{ V to }5\text{ V}$, $T_A = 25\text{ }^\circ\text{C}$, unless otherwise specified.

Table 8. Switching characteristics

| Symbol | Parameter | Test conditions | Min | Typ | Max | Unit | |
|------------|--|--|-------------------------|-----|------|------|----|
| t_{PLH1} | Propagation delay time, CLK-OUTn, LE = H, OE = L | $V_{IH} = V_{DD}$ $V_{IL} = \text{GND}$ $I_O = 20\text{ mA}$ $R_{EXT} = 1\text{ K}\Omega$ $C_L = 10\text{ pF}$ $V_L = 3.0\text{ V}$ $R_L = 60\ \Omega$ | $V_{DD} = 3.3\text{ V}$ | | 53.5 | 86.5 | ns |
| | | | $V_{DD} = 5\text{ V}$ | | 32 | 46.5 | |
| t_{PLH2} | Propagation delay time, LE-OUTn, OE = L | | $V_{DD} = 3.3\text{ V}$ | | 48 | 75.5 | ns |
| | | | $V_{DD} = 5\text{ V}$ | | 30 | 43 | |
| t_{PLH3} | Propagation delay time, OE-OUTn, LE = H | | $V_{DD} = 3.3\text{ V}$ | | 71.5 | 118 | ns |
| | | | $V_{DD} = 5\text{ V}$ | | 43 | 62 | |
| t_{PLH} | Propagation delay time, CLK-SDO | | $V_{DD} = 3.3\text{ V}$ | 15 | 21 | 31 | ns |
| | | | $V_{DD} = 5\text{ V}$ | 11 | 15 | 21 | |
| t_{PHL1} | Propagation delay time, CLK-OUTn, LE = H, OE = L | | $V_{DD} = 3.3\text{ V}$ | | 27.5 | 39 | ns |
| | | | $V_{DD} = 5\text{ V}$ | | 22 | 30.5 | |
| t_{PHL2} | Propagation delay time, LE-OUTn, OE = L | | $V_{DD} = 3.3\text{ V}$ | | 11.5 | 17.5 | ns |
| | | | $V_{DD} = 5\text{ V}$ | | 8 | 11.5 | |
| t_{PHL3} | Propagation delay time, OE-OUTn, LE = H | | $V_{DD} = 3.3\text{ V}$ | | 24 | 33.5 | ns |
| | | | $V_{DD} = 5\text{ V}$ | | 21 | 28.5 | |
| t_{PHL} | Propagation delay time, CLK-SDO | $V_{DD} = 3.3\text{ V}$ | 17.5 | 24 | 36 | ns | |
| | | $V_{DD} = 5\text{ V}$ | 12.5 | 17 | 25 | | |
| t_{ON} | Output rise time 10~90% of voltage waveform | $V_{DD} = 3.3\text{ V}$ | | 29 | 54 | ns | |
| | | $V_{DD} = 5\text{ V}$ | | 10 | 17 | | |
| t_{OFF} | Output fall time 90~10% of voltage waveform | $V_{DD} = 3.3\text{ V}$ | | 4.5 | 6 | ns | |
| | | $V_{DD} = 5\text{ V}$ | | 3.5 | 5 | | |
| t_r | CLK rise time ⁽¹⁾ | | | | 5000 | ns | |
| t_f | CLK fall time ⁽¹⁾ | | | | 5000 | ns | |

1. In order to achieve high cascade data transfer, please consider t_r/t_f timings carefully.

4 Equivalent circuit and outputs

Figure 2. \overline{OE} terminal

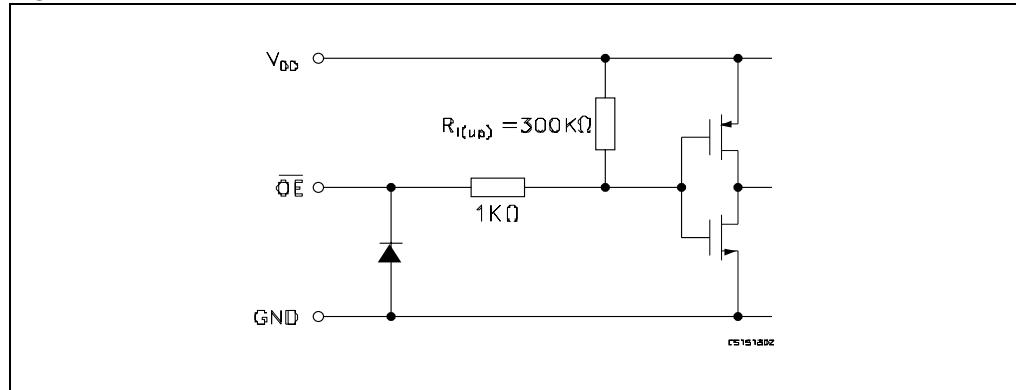


Figure 3. LE terminal

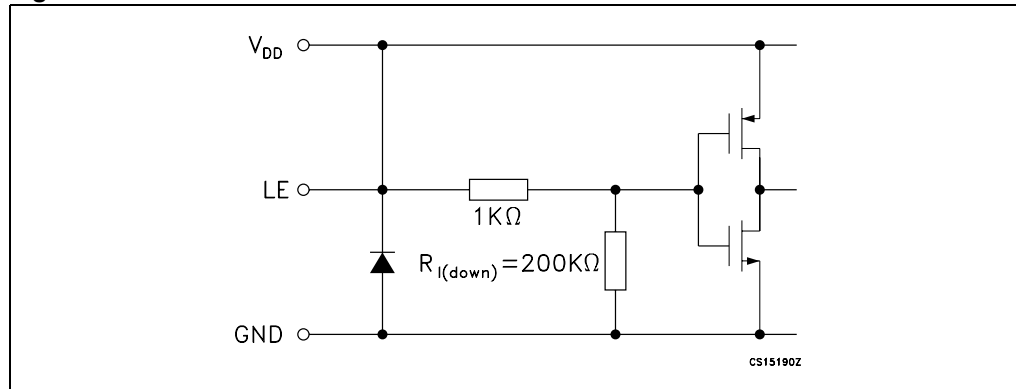


Figure 4. CLK, SDI terminal

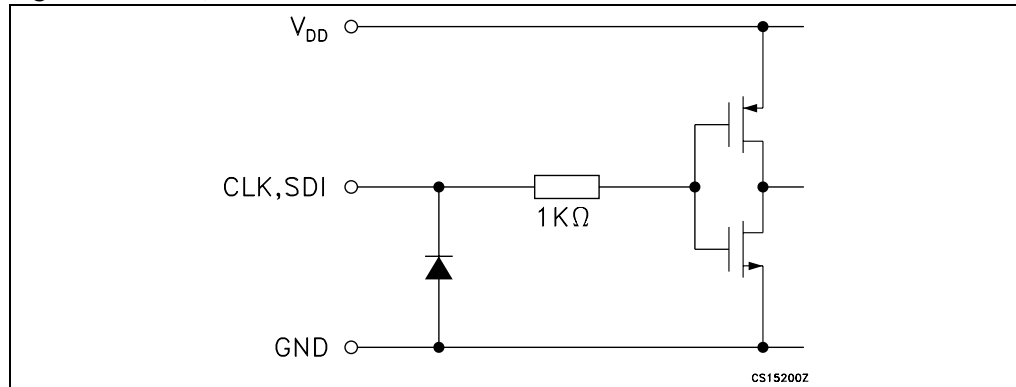


Figure 5. SDO terminal

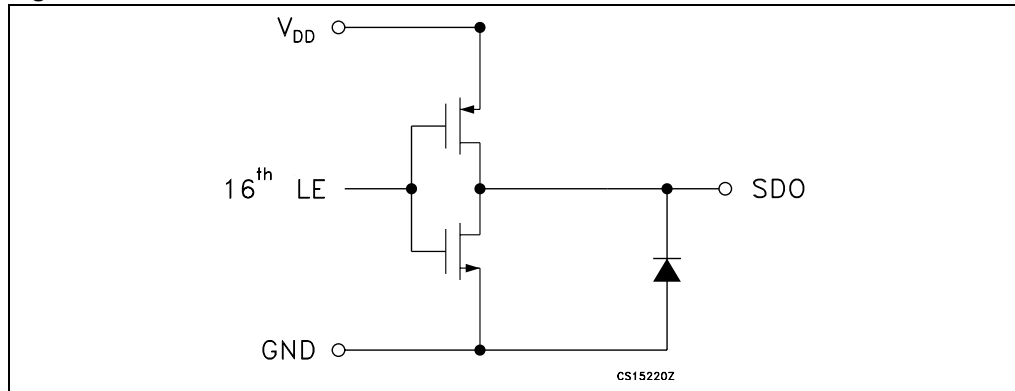
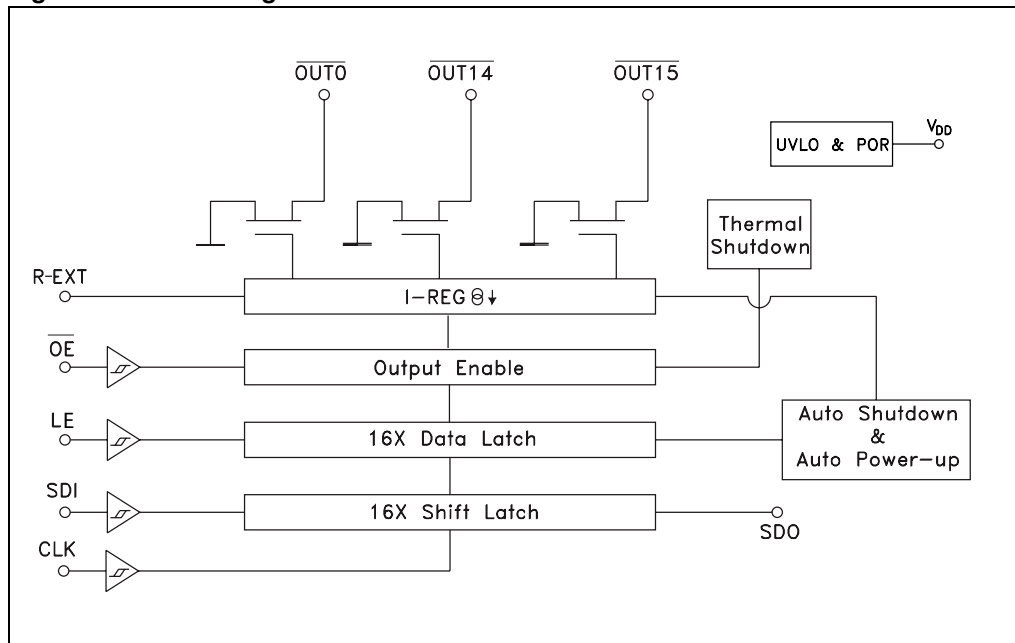


Figure 6. Block diagram



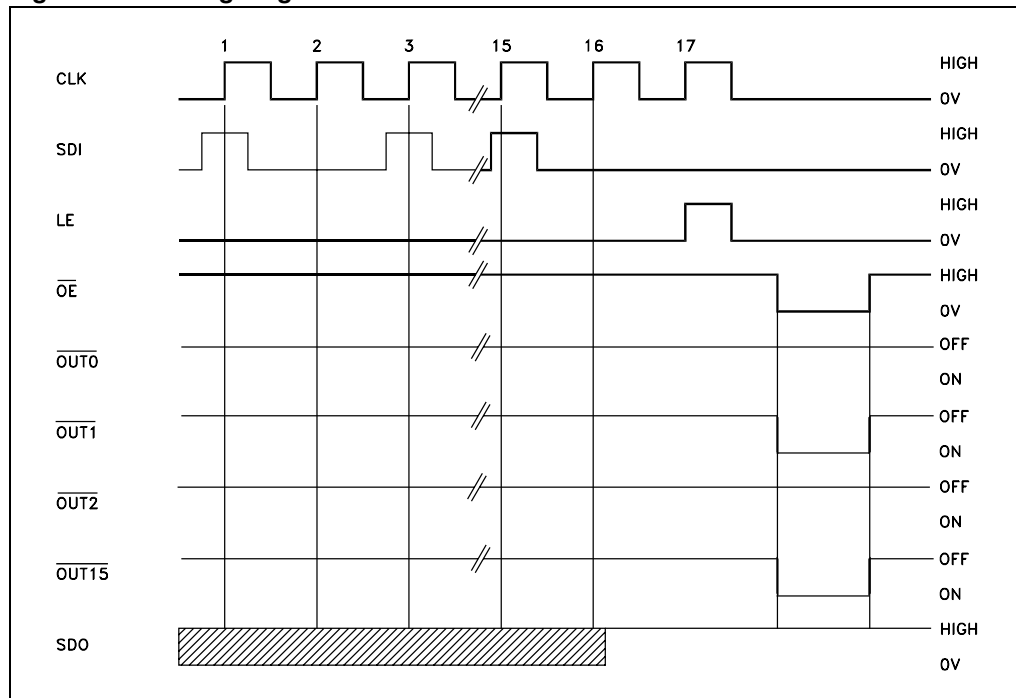
5 Timing diagrams

Table 9. Truth table

| CLOCK | LE | \overline{OE} | SERIAL-IN | $\overline{OUT0}$ $\overline{OUT7}$ $\overline{OUT15}$ | SDO |
|-------|----|-----------------|-----------|--|---------|
| | H | L | Dn | Dn Dn - 7 Dn - 15 | Dn - 15 |
| | L | L | Dn + 1 | No change | Dn - 14 |
| | H | L | Dn + 2 | Dn + 2 Dn - 5 Dn - 13 | Dn - 13 |
| | X | L | Dn + 3 | Dn + 2 Dn - 5 Dn - 13 | Dn - 13 |
| | X | H | Dn + 3 | OFF | Dn - 13 |

Note: $OUTn = ON$ when $Dn = H$ $OUTn = OFF$ when $Dn = L$

Figure 7. Timing diagram



- Note:
- 1 Latch and output enable terminals are level-sensitive and are not synchronized with rising or falling edge of CLK signal.
 - 2 When LE terminal is low level, the latch circuit holds previous set of data.
 - 3 When LE terminal is high level, the latch circuit refreshes new set of data from SDI chain.
 - 4 When \overline{OE} terminal is at low level, the output terminals Out 0 to Out 15 respond to data in the latch circuits, either '1' for ON or '0' for OFF.
 - 5 When \overline{OE} terminal is at high level, all output terminals are switched OFF.

Table 10. Enable IO: shutdown truth table

| CLOCK | LE | SDI ₀ SDI ₇ SDI ₁₅ | SH | Auto Power-up | $\overline{\text{OUTn}}$ |
|-------|----|---|------------|---------------------------|--------------------------|
| | H | All = L | Active | Not active ⁽¹⁾ | OFF |
| | L | No change | No change | No change | No change |
| | H | One or more = H | Not active | Active | X ⁽²⁾ |

1. At power-up, the device starts in shutdown mode.
2. Undefined.

Figure 8. Clock, serial-in, serial-out

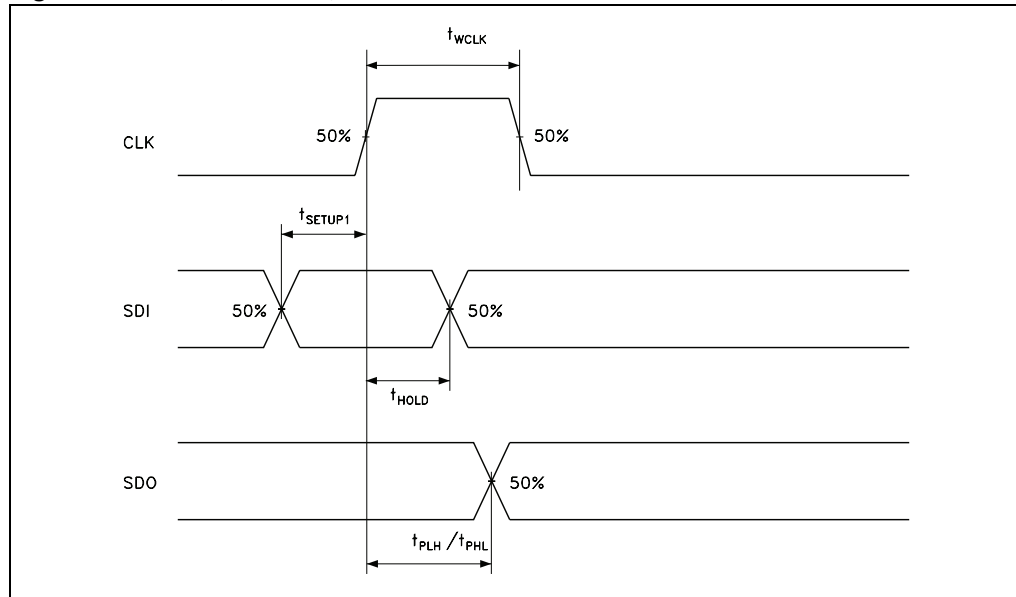


Figure 9. Clock, serial-in, latch, enable, outputs

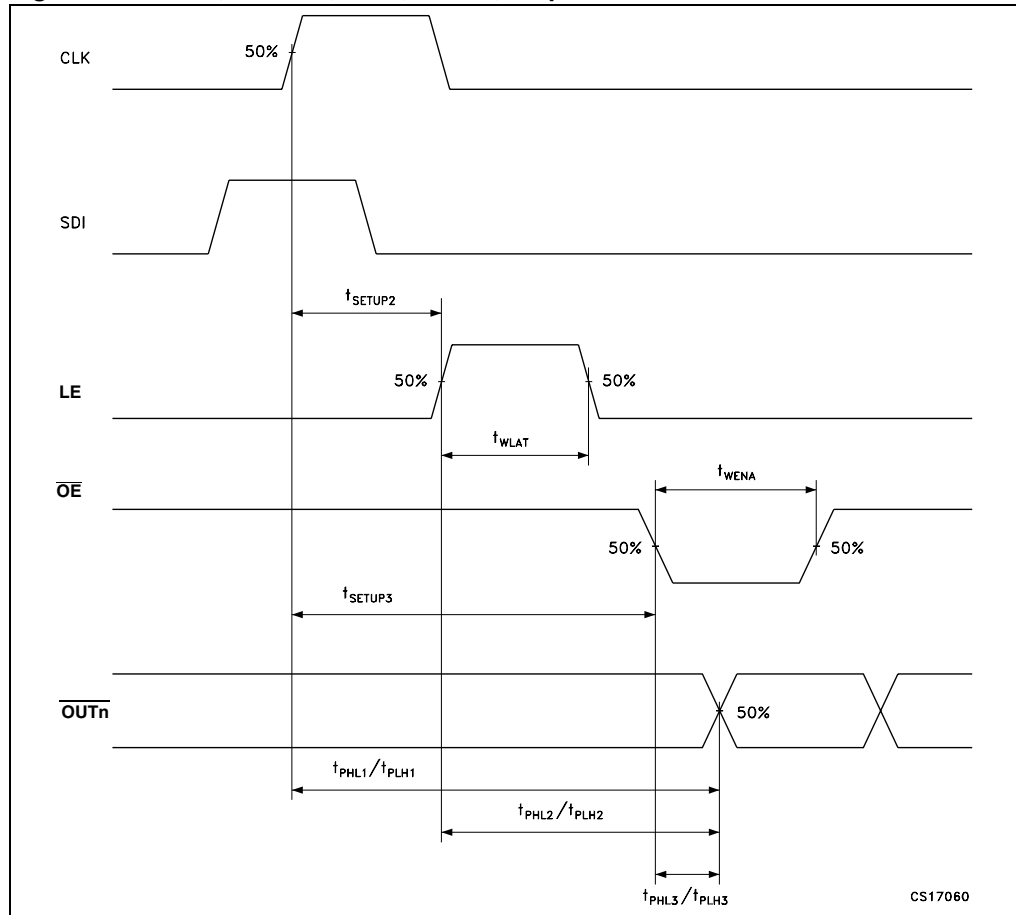
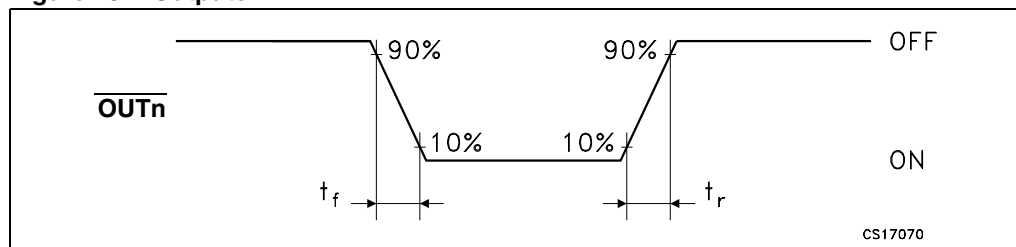


Figure 10. Outputs



6 Typical characteristics

Figure 11. Output current vs. R-EXT resistor

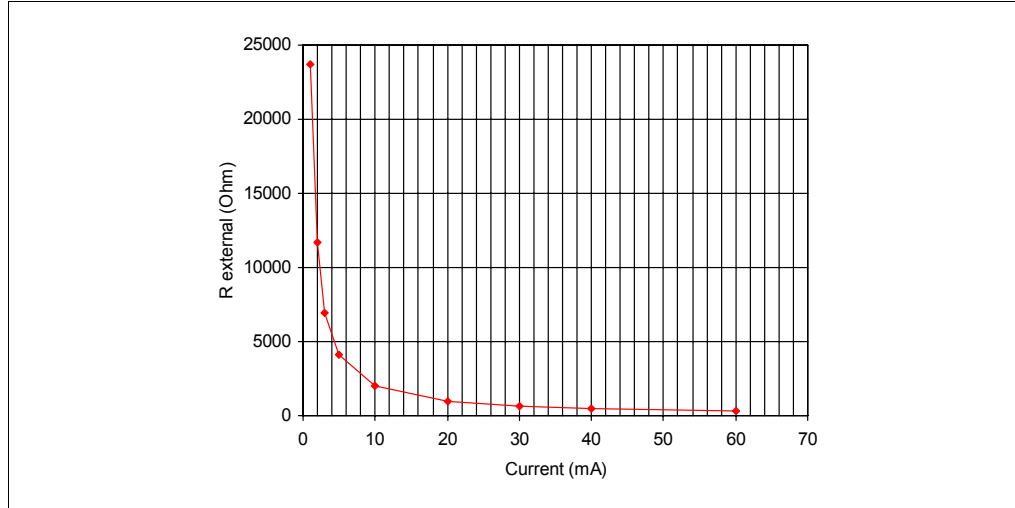


Table 11. Output current vs. R-EXT resistor

| R-EXT (Ω) | Output current (mA) |
|--------------------|---------------------|
| 23700 | 1 |
| 11730 | 2 |
| 6930 | 3 |
| 4090 | 5 |
| 2025 | 10 |
| 1000 | 20 |
| 667 | 30 |
| 497 | 40 |
| 331 | 60 |

Conditions:

Temperature = 25 °C, V_{DD} = 3.3 V; 5.0 V, I_{SET} = 3 mA; 5 mA; 10 mA; 20 mA; 50 mA; 60 mA.

Figure 12. I_{SET} vs. dropout voltage (V_{drop})

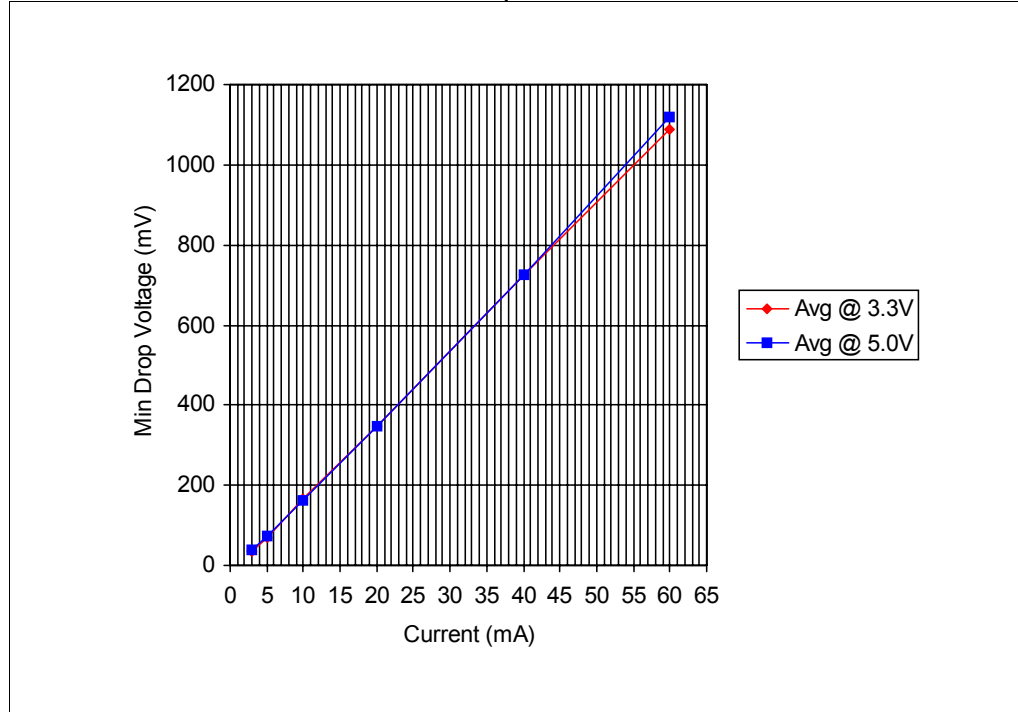


Table 12. I_{SET} vs. dropout voltage (V_{drop})

| I_{out} (mA) | Avg (mV) @ 3.3 V | Avg (mV) @ 5.0 V |
|----------------|------------------|------------------|
| 3 | 36 | 37 |
| 5 | 71 | 72 |
| 10 | 163 | 163 |
| 20 | 346 | 347 |
| 40 | 724 | 726 |
| 60 | 1080 | 1110 |

$T_A = 25\text{ }^\circ\text{C}$, $V_{dd} = 3.3\text{ V}; 5\text{ V}$

Figure 13. Output current vs. $\pm \Delta I_{OL}(\%)$

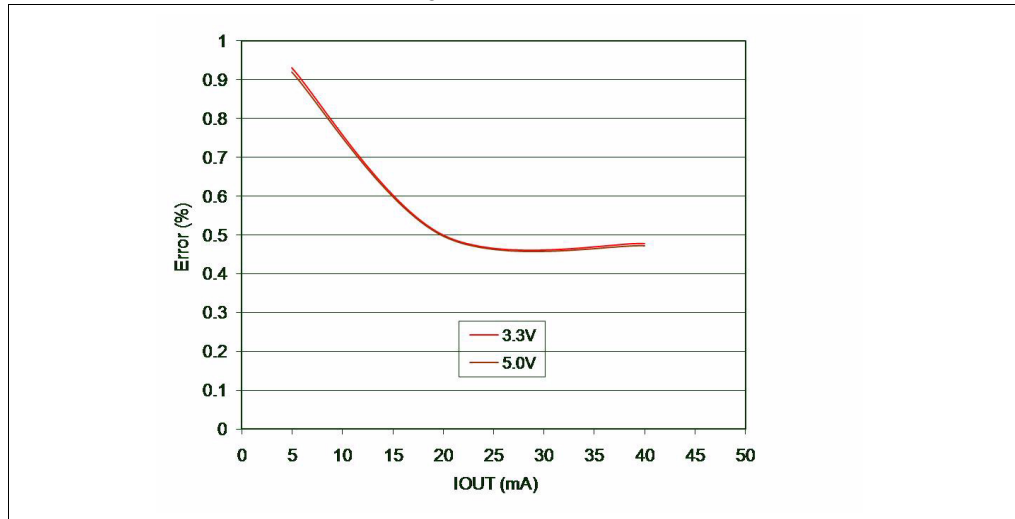


Figure 14. Idd ON/OFF

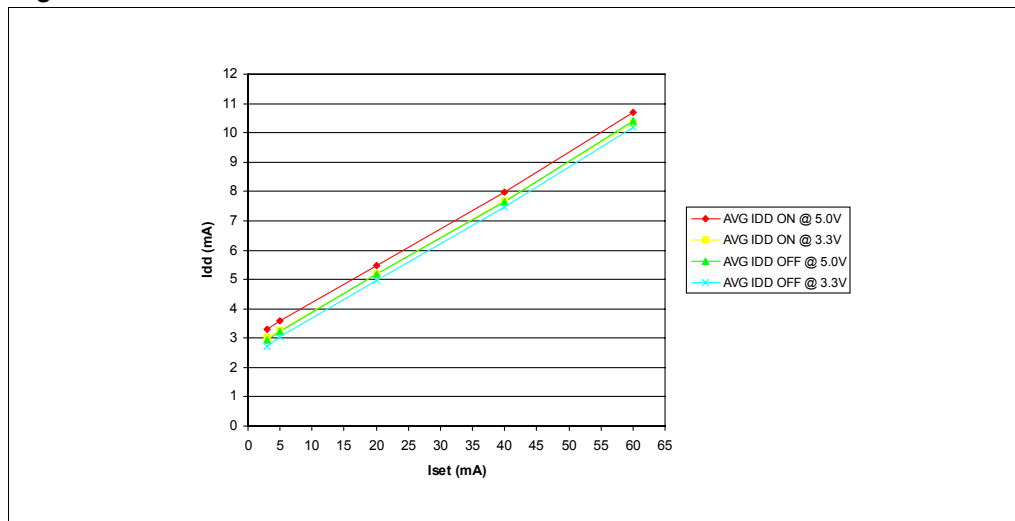
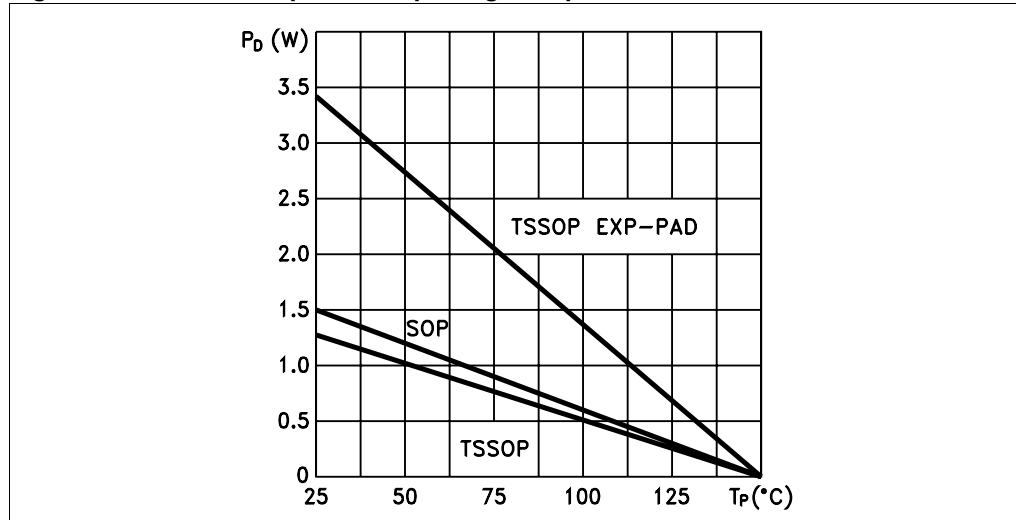


Figure 15. Power dissipation vs. package temperature



Note: The exposed pad should be soldered to the PCB to obtain the thermal benefits.

Figure 16. Turn ON output current characteristics (1)

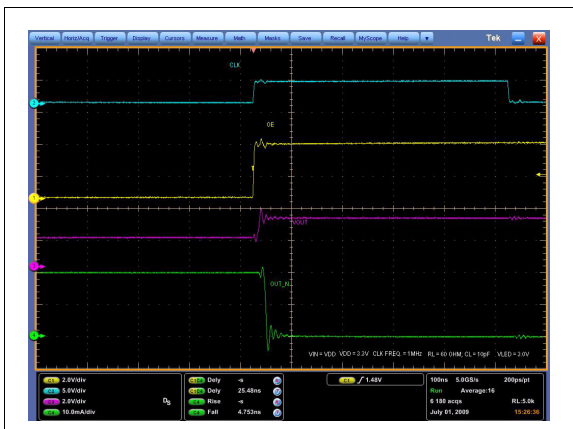
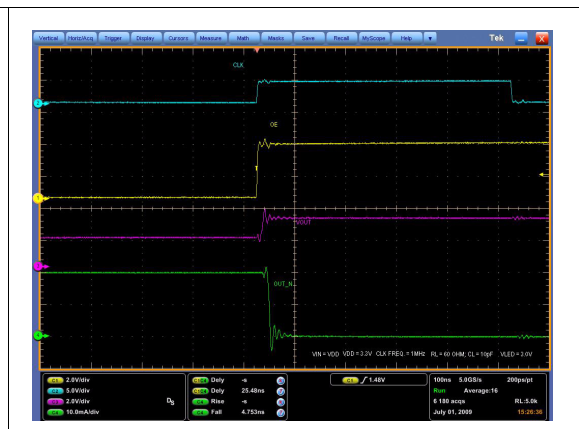


Figure 17. Turn OFF output current characteristics (2)



Electrical conditions:
 $V_{DD} = 3.3\text{ V}$, $V_{in} = V_{DD}$, $V_{led} = 3.0\text{ V}$, $R_L = 60\ \Omega$, $C_L = 10\text{ pF}$
 Ch1 (Yellow) = \overline{OE} , Ch2 (Blue) = CLK, Ch3 (Purple) = VOUT, Ch4 (Green) = OUT

1. The reference level for the T_{ON} characteristics is 50% of \overline{OE} signal and 90% of output current
2. The reference level for the T_{OFF} characteristics is 50% of \overline{OE} signal and 10% of output current

6.1 Auto power-saving

The auto power-saving feature minimizes the quiescent current if no active data is detected on the latches and auto powers-up the device as the first active data is latched.

Figure 18. Auto power-saving feature



Electrical conditions: Temp. = 25 °C, Vdd = 3.3 V, Vin = Vdd, Vled = 3.0 V, RL = 60 Ω, CL = 10 pF
 Ch1 (Yellow) = \overline{OE} , Ch2 (Blue) = CLK, Ch3 (Purple) = LE, Ch4 (Green) = idd
 Idd consumption:
 Idd (normal operation) = 4.2 mA
 Idd (shut down condition) = 190 μA

Figure 19. First output ON after switching from auto power saving to normal operating condition



Note: *When the device goes from AUTO power saving to normal operative condition, the first output that switch ON shows TON condition as seen in the plot above.*

7 Package mechanical data

In order to meet environmental requirements, ST offers these devices in different grades of ECOPACK® packages, depending on their level of environmental compliance. ECOPACK® specifications, grade definitions and product status are available at: www.st.com. ECOPACK® is an ST trademark.

Table 13. QSOP-24 mechanical data

| Dim. | mm. | | | inch | | |
|------|-------|-------|------|-------|-------|-------|
| | Min | Typ | Max | Min | Typ | Max |
| A | 1.54 | 1.62 | 1.73 | 0.061 | 0.064 | 0.068 |
| A1 | 0.1 | 0.15 | 0.25 | 0.004 | 0.006 | 0.010 |
| A2 | | 1.47 | | | 0.058 | |
| b | 0.31 | 0.2 | | 0.012 | 0.008 | |
| c | 0.254 | 0.17 | | 0.010 | 0.007 | |
| D | 8.56 | 8.66 | 8.76 | 0.337 | 0.341 | 0.345 |
| E | 5.8 | 6 | 6.2 | 0.228 | 0.236 | 0.244 |
| E1 | 3.8 | 3.91 | 4.01 | 0.150 | 0.154 | 0.158 |
| e | | 0.635 | | | 0.025 | |
| L | 0.4 | 0.635 | 0.89 | 0.016 | 0.025 | 0.035 |
| h | 0.25 | 0.33 | 0.41 | 0.010 | 0.013 | 0.016 |
| < | 8° | 0° | | | | |

Figure 20. QSOP-24 package dimensions

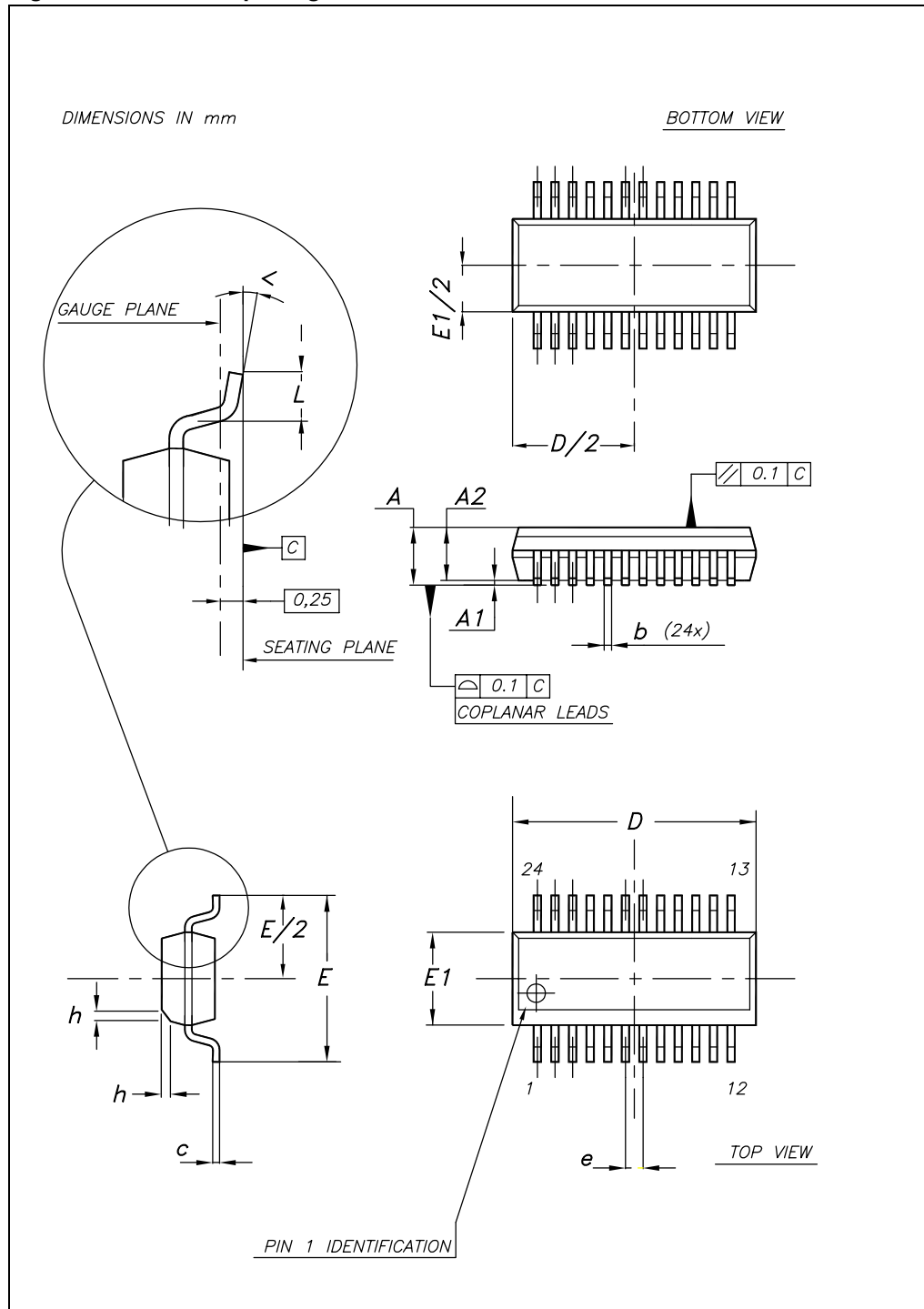


Table 14. QSOP-24 tape and reel

| Dim. | mm. | | | Inches | | |
|------|------|------|------|--------|---------|-------|
| | Min | Typ | Max | Min | Typ | Max |
| R1 | 12.8 | 13 | 13.5 | 5.039 | 5.118 | 5.315 |
| R2 | | 330 | | | 129.921 | |
| R3 | | 100 | | | 39.37 | |
| eint | | 16.4 | | | 6.457 | |
| e1 | 1.5 | 2 | 2.5 | 0.591 | 0.787 | 0.984 |

Figure 21. QSOP-24 tape and reel dimensions

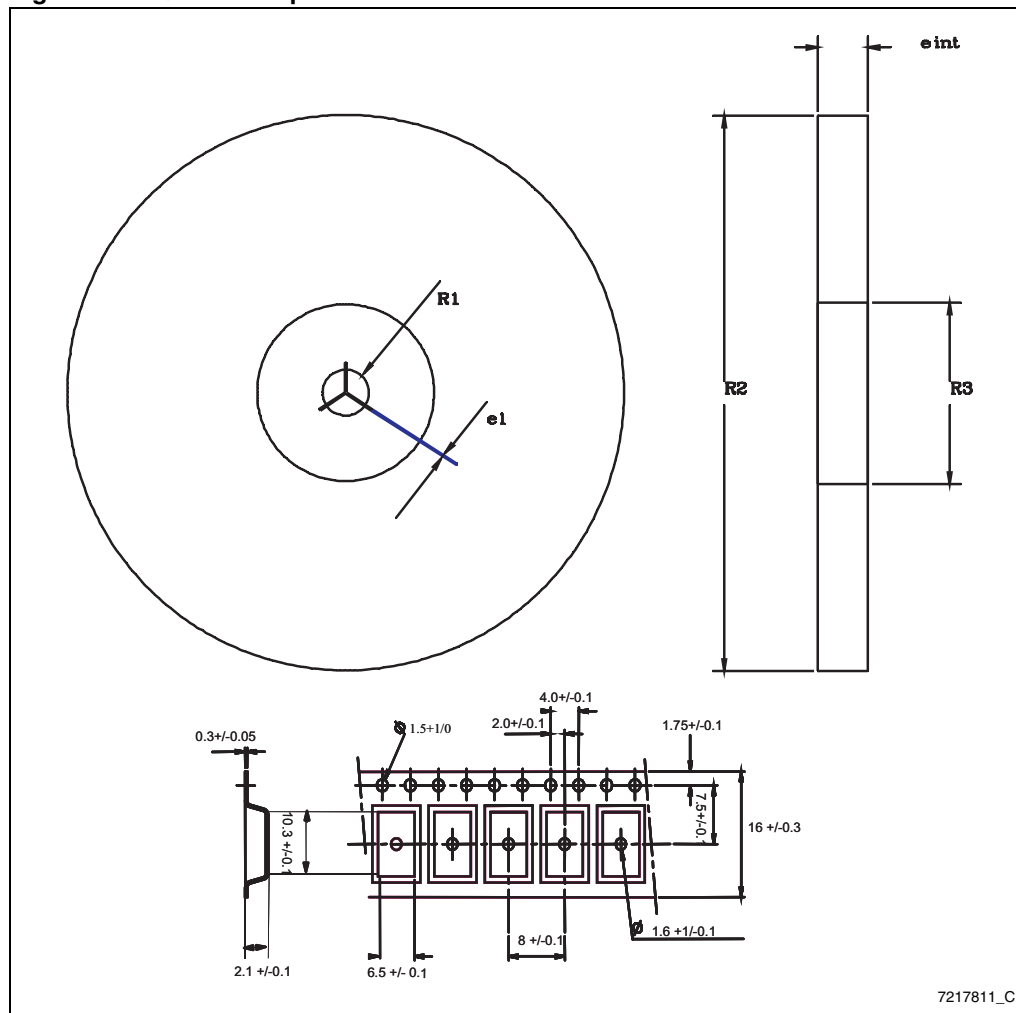


Table 15. TSSOP24 mechanical data

| Dim. | mm. | | | Inches | | |
|------|------|----------|------|--------|------------|--------|
| | Min | Typ | Max | Min | Typ | Max |
| A | | | 1.1 | | | 0.043 |
| A1 | 0.05 | | 0.15 | 0.002 | | 0.006 |
| A2 | | 0.9 | | | 0.035 | |
| b | 0.19 | | 0.30 | 0.0075 | | 0.0118 |
| c | 0.09 | | 0.20 | 0.0035 | | 0.0079 |
| D | 7.7 | | 7.9 | 0.303 | | 0.311 |
| E | 4.3 | | 4.5 | 0.169 | | 0.177 |
| e | | 0.65 BSC | | | 0.0256 BSC | |
| H | 6.25 | | 6.5 | 0.246 | | 0.256 |
| K | 0° | | 8° | 0° | | 8° |
| L | 0.50 | | 0.70 | 0.020 | | 0.028 |

Figure 22. TSSOP24 package dimensions

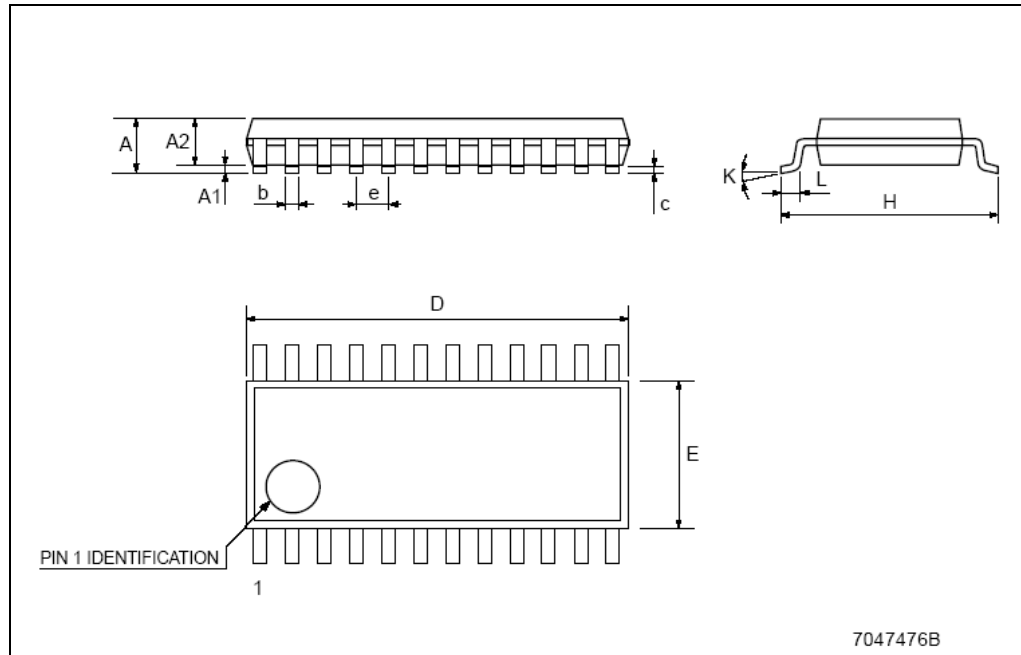


Table 16. TSSOP24 exposed pad mechanical data

| Dim. | mm | | | Inches | | |
|------|------|------|------|--------|--------|--------|
| | Min | Typ | Max | Min | Typ | Max |
| A | | | 1.2 | | | 0.047 |
| A1 | | | 0.15 | | 0.004 | 0.006 |
| A2 | 0.8 | 1 | 1.05 | 0.031 | 0.039 | 0.041 |
| b | 0.19 | | 0.30 | 0.007 | | 0.012 |
| c | 0.09 | | 0.20 | 0.004 | | 0.0089 |
| D | 7.7 | 7.8 | 7.9 | 0.303 | 0.307 | 0.311 |
| D1 | 4.7 | 5.0 | 5.3 | 0.185 | 0.197 | 0.209 |
| E | 6.2 | 6.4 | 6.6 | 0.244 | 0.252 | 0.260 |
| E1 | 4.3 | 4.4 | 4.5 | 0.169 | 0.173 | 0.177 |
| E2 | 2.9 | 3.2 | 3.5 | 0.114 | 0.126 | 0.138 |
| e | | 0.65 | | | 0.0256 | |
| K | 0° | | 8° | 0° | | 8° |
| L | 0.45 | 0.60 | 0.75 | 0.018 | 0.024 | 0.030 |

Figure 23. TSSOP24 exposed pad dimensions

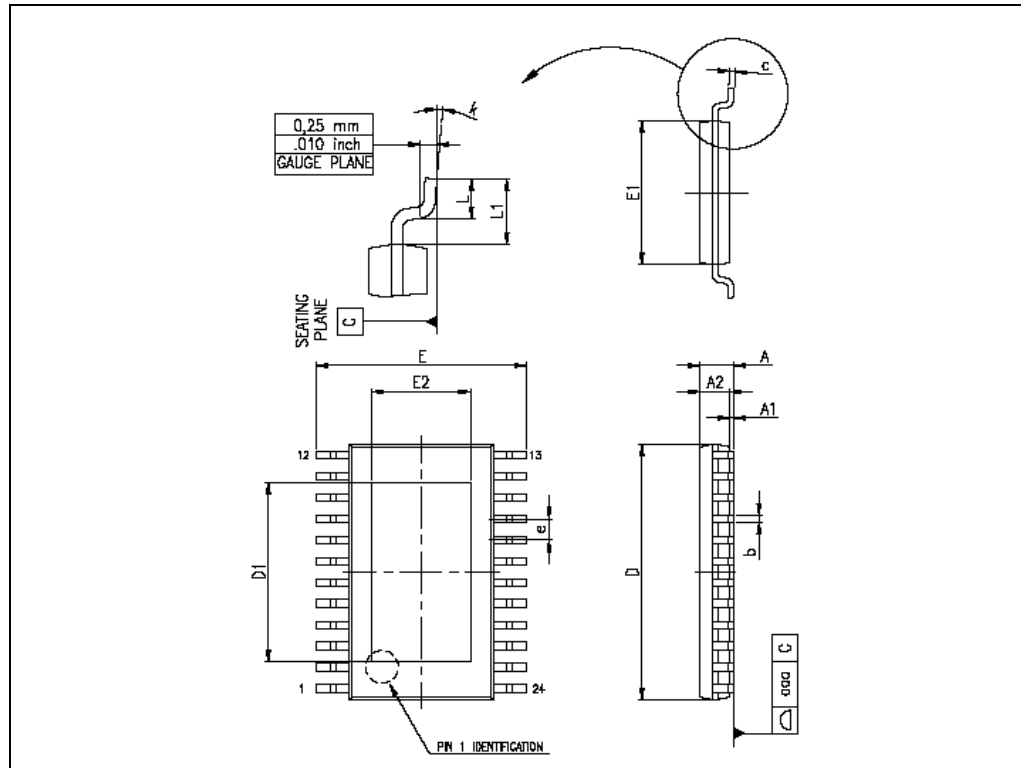


Table 17. Tape and reel TSSOP24 and TSSOP24 exposed pad

| Dim. | mm. | | | Inches | | |
|------|------|-----|------|--------|-----|--------|
| | Min | Typ | Max | Min | Typ | Max |
| A | | | 330 | | | 12.992 |
| C | 12.8 | | 13.2 | 0.504 | | 0.519 |
| D | 20.2 | | | 0.795 | | |
| N | 60 | | | 2.362 | | |
| T | | | 22.4 | | | 0.882 |
| Ao | 6.8 | | 7 | 0.268 | | 0.276 |
| Bo | 8.2 | | 8.4 | 0.323 | | 0.331 |
| Ko | 1.7 | | 1.9 | 0.067 | | 0.075 |
| Po | 3.9 | | 4.1 | 0.153 | | 0.161 |
| P | 11.9 | | 12.1 | 0.468 | | 0.476 |

Figure 24. TSSOP24 and TSSOP24 exposed pad tape and reel dimensions

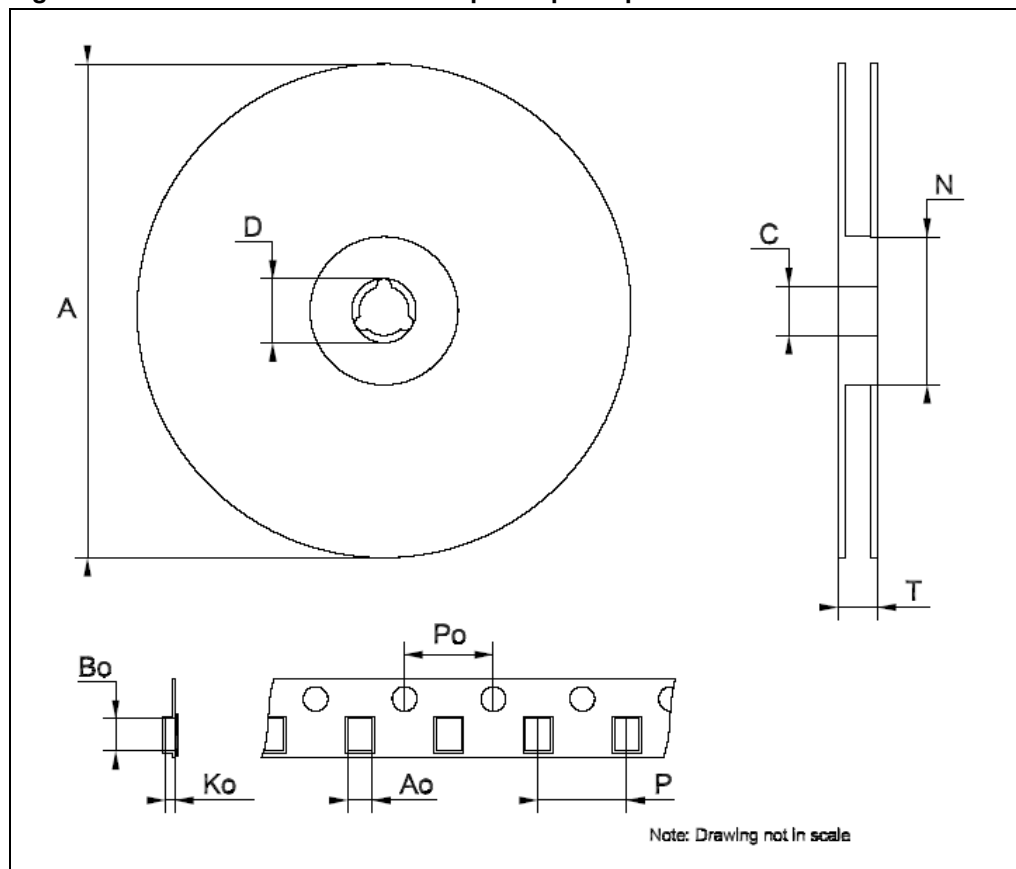
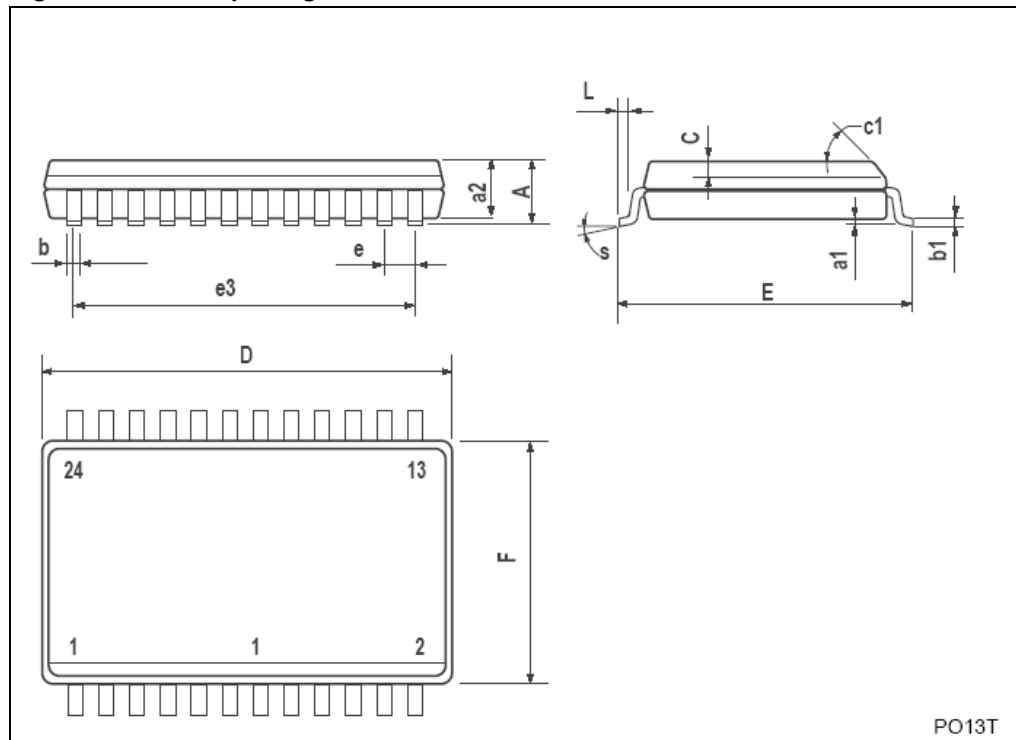


Table 18. SO-24 mechanical data

| Dim. | mm. | | | Inches | | |
|------|-----------|-------|-------|--------|-------|-------|
| | Min | Typ | Max | Min | Typ | Max |
| A | | | 2.65 | | | 0.104 |
| a1 | 0.1 | | 0.2 | 0.004 | | 0.008 |
| a2 | | | 2.45 | | | 0.096 |
| b | 0.35 | | 0.49 | 0.014 | | 0.019 |
| b1 | 0.23 | | 0.32 | 0.009 | | 0.012 |
| C | | 0.5 | | | 0.020 | |
| c1 | 45°(typ.) | | | | | |
| D | 15.20 | | 15.60 | 0.598 | | 0.614 |
| E | 10.00 | | 10.65 | 0.393 | | 0.419 |
| e | | 1.27 | | | 0.050 | |
| e3 | | 13.97 | | | 0.550 | |
| F | 7.40 | | 7.60 | 0.291 | | 0.300 |
| L | 0.50 | | 1.27 | 0.020 | | 0.050 |
| S | °(max.) 8 | | | | | |

Figure 25. SO-24 package dimensions

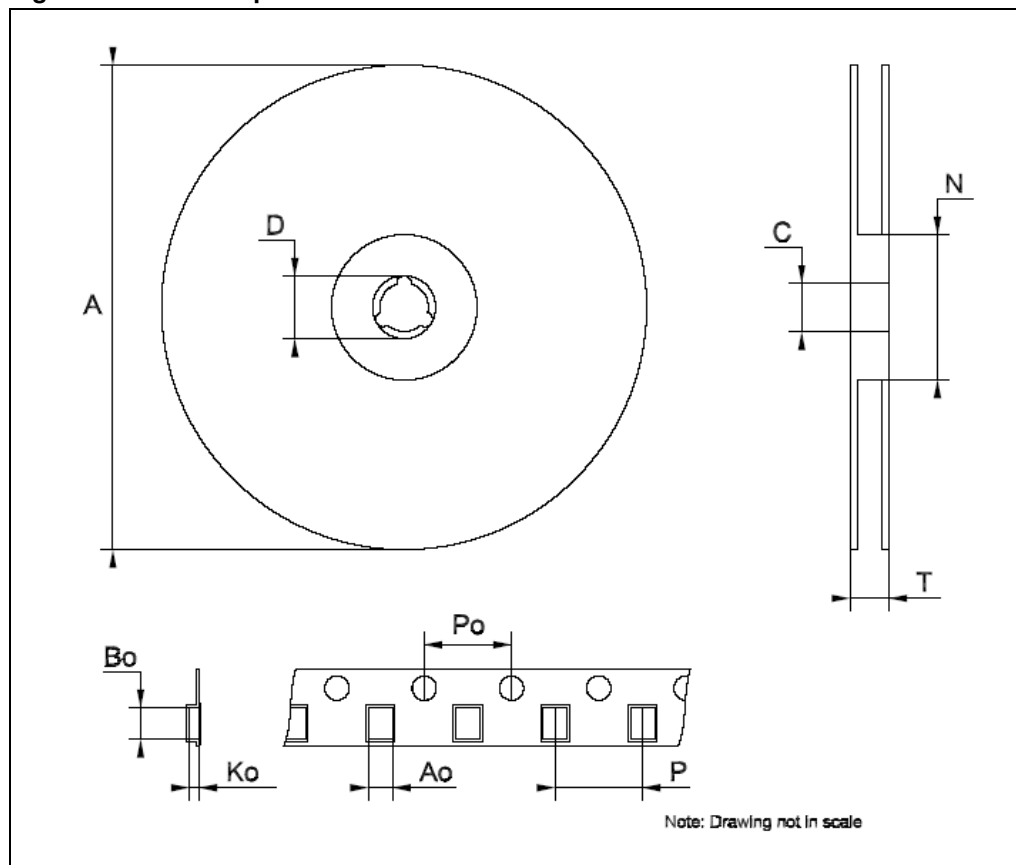


PO13T

Table 19. Tape and reel SO-24

| Dim. | mm. | | | Inches | | |
|------|------|-----|------|--------|-----|--------|
| | Min | Typ | Max | Min | Typ | Max |
| A | | | 330 | | | 12.992 |
| C | 12.8 | | 13.2 | 0.504 | | 0.519 |
| D | 20.2 | | | 0.795 | | |
| N | 60 | | | 2.362 | | |
| T | | | 30.4 | | | 1.197 |
| Ao | 10.8 | | 11.0 | 0.425 | | 0.433 |
| Bo | 15.7 | | 15.9 | 0.618 | | 0.626 |
| Ko | 2.9 | | 3.1 | 0.114 | | 0.122 |
| Po | 3.9 | | 4.1 | 0.153 | | 0.161 |
| P | 11.9 | | 12.1 | 0.468 | | 0.476 |

Figure 26. SO-24 tape and reel dimensions



8 Revision history

Table 20. Document revision history

| Date | Revision | Changes |
|-------------|----------|------------------|
| 23-Oct-2009 | 1 | Initial release. |

Please Read Carefully:

Information in this document is provided solely in connection with ST products. STMicroelectronics NV and its subsidiaries ("ST") reserve the right to make changes, corrections, modifications or improvements, to this document, and the products and services described herein at any time, without notice.

All ST products are sold pursuant to ST's terms and conditions of sale.

Purchasers are solely responsible for the choice, selection and use of the ST products and services described herein, and ST assumes no liability whatsoever relating to the choice, selection or use of the ST products and services described herein.

No license, express or implied, by estoppel or otherwise, to any intellectual property rights is granted under this document. If any part of this document refers to any third party products or services it shall not be deemed a license grant by ST for the use of such third party products or services, or any intellectual property contained therein or considered as a warranty covering the use in any manner whatsoever of such third party products or services or any intellectual property contained therein.

UNLESS OTHERWISE SET FORTH IN ST'S TERMS AND CONDITIONS OF SALE ST DISCLAIMS ANY EXPRESS OR IMPLIED WARRANTY WITH RESPECT TO THE USE AND/OR SALE OF ST PRODUCTS INCLUDING WITHOUT LIMITATION IMPLIED WARRANTIES OF MERCHANTABILITY, FITNESS FOR A PARTICULAR PURPOSE (AND THEIR EQUIVALENTS UNDER THE LAWS OF ANY JURISDICTION), OR INFRINGEMENT OF ANY PATENT, COPYRIGHT OR OTHER INTELLECTUAL PROPERTY RIGHT.

UNLESS EXPRESSLY APPROVED IN WRITING BY AN AUTHORIZED ST REPRESENTATIVE, ST PRODUCTS ARE NOT RECOMMENDED, AUTHORIZED OR WARRANTED FOR USE IN MILITARY, AIR CRAFT, SPACE, LIFE SAVING, OR LIFE SUSTAINING APPLICATIONS, NOR IN PRODUCTS OR SYSTEMS WHERE FAILURE OR MALFUNCTION MAY RESULT IN PERSONAL INJURY, DEATH, OR SEVERE PROPERTY OR ENVIRONMENTAL DAMAGE. ST PRODUCTS WHICH ARE NOT SPECIFIED AS "AUTOMOTIVE GRADE" MAY ONLY BE USED IN AUTOMOTIVE APPLICATIONS AT USER'S OWN RISK.

Resale of ST products with provisions different from the statements and/or technical features set forth in this document shall immediately void any warranty granted by ST for the ST product or service described herein and shall not create or extend in any manner whatsoever, any liability of ST.

ST and the ST logo are trademarks or registered trademarks of ST in various countries.

Information in this document supersedes and replaces all information previously supplied.

The ST logo is a registered trademark of STMicroelectronics. All other names are the property of their respective owners.

© 2009 STMicroelectronics - All rights reserved

STMicroelectronics group of companies

Australia - Belgium - Brazil - Canada - China - Czech Republic - Finland - France - Germany - Hong Kong - India - Israel - Italy - Japan - Malaysia - Malta - Morocco - Philippines - Singapore - Spain - Sweden - Switzerland - United Kingdom - United States of America

www.st.com

