

4

3

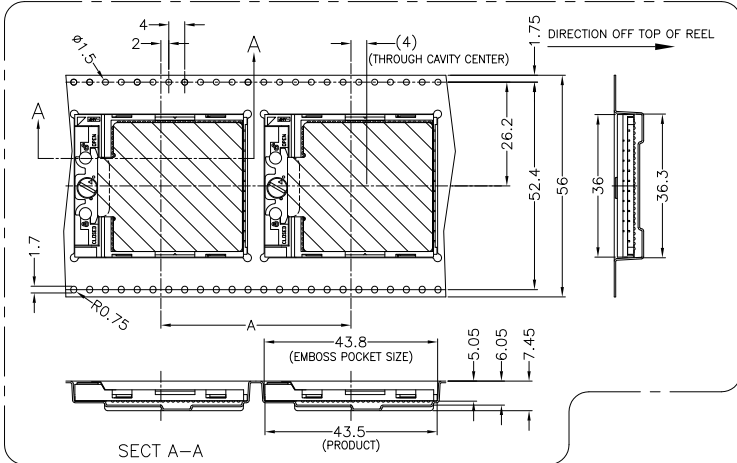
2

1

THIS DRAWING IS UNPUBLISHED. RELEASED FOR PUBLICATION 2001. ALL RIGHTS RESERVED.

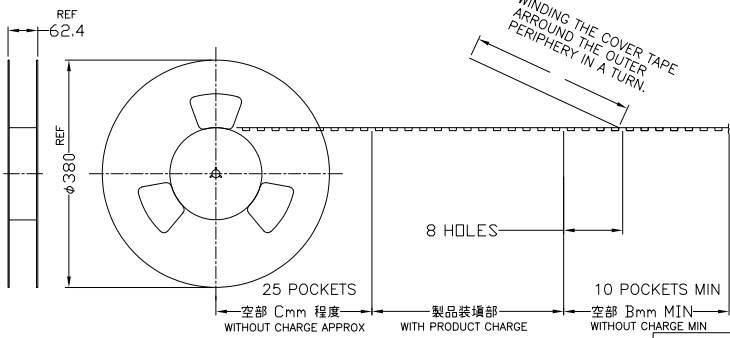
© COPYRIGHT 2001 By -

LOC	DIST	REVISIONS			
P	LTR	DESCRIPTION	DATE	DWN	APVD
K2		REVISED PER ECO-11-005030	11MAR11	RK	HMR



PICK AND PLACE PART DIFFERENCE			
MASK TAPE (50 MICRO) WEIGHT:6.4(g)	MASK TAPE (75 MICRO) WEIGHT:6.4(g)	CAP WEIGHT:7.8(g)	MASK TAPE(CENTER OPENED) (50 MICRO) WEIGHT:6.4(g)

SOCKET TYPE VARIATIONS				
479M STANDARD	478A TYPE STANDARD	478B TYPE STANDARD	478C TYPE STANDARD	479M WITH PEG
479M 180DEG ROTATE	478A TYPE 180DEG ROTATE	478B TYPE 180DEG ROTATE	478C TYPE 180DEG ROTATE	479M WITHOUT PEG



△ MATERIAL
EMBOSS TAPE : PET
COVER TAPE : PET
PROTECTION BAND : PAPER

TAPE AND REEL PACKING
AS SHOWN

THIS DRAWING IS A CONTROLLED DOCUMENT.		DWN A.KUBO 20JAN03	TE Connectivity	
DIMENSIONS: MM		CHK S.ABE 21JAN03		
TOLERANCES UNLESS OTHERWISE SPECIFIED:		APVD H.SHIRAI 21JAN03	NAME	
0 PLC ± 0.3		PRODUCT SPEC		
1 PLC ± 0.3		108-5744		
2 PLC ± 0.3		APPLICATION SPEC		
3 PLC ± 0.3		INSTRUCTION SHEET		
4 PLC ± 0.3		411-5983		
ANGLES ± 3°		SIZE	CAGE CODE	DRAWING NO
MATERIAL		WEIGHT	SEE TABLE	A3 00779 C-1674770
FINISH		CUSTOMER DRAWING		RESTRICTED TO
		SCALE	NTS	SHEET 1 of 3 REV K2

4

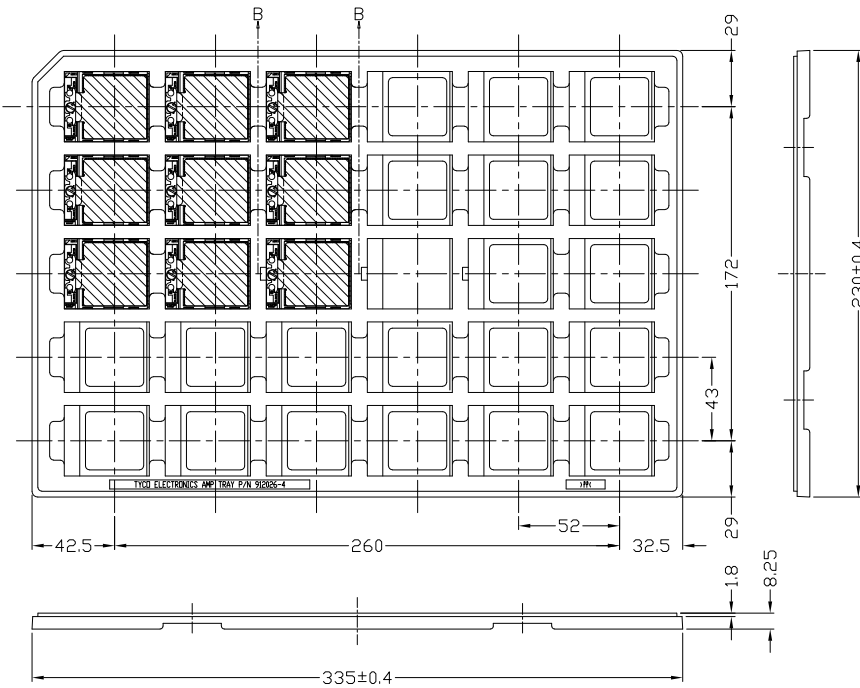
3

2

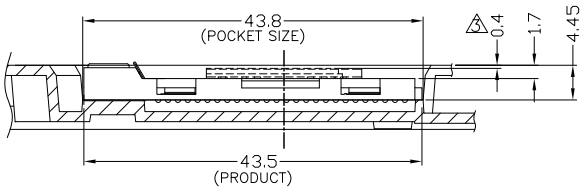
1

THIS DRAWING IS UNPUBLISHED. RELEASED FOR PUBLICATION 2001.
 © COPYRIGHT 2001 By -- ALL RIGHTS RESERVED.

LOC	DIST	REVISIONS				
P	LTR	DESCRIPTION	DATE	DWN	APVD	
-	-	SEE SHEET 1	-	-	-	



- △ MATERIAL
PP
- △ IN CASE OF PICK AND PLACE CAP ITEM
- △ OBSOLETE PARTS: OBSOLETE CIS STREAMLINING PER
D.RENAUD/D.SINISI



SECTION B-B
SCALE 2:1

TRAY PACKING
AS SHOWN

THIS DRAWING IS A CONTROLLED DOCUMENT.		DWN			
DIMENSIONS: MM		CHK			
TOLERANCES UNLESS OTHERWISE SPECIFIED:		APVD			
0 PLC ± 0.3		PRODUCT SPEC	NAME		
1 PLC ± 0.3		APPLICATION SPEC	PACKING ASSY		
2 PLC ± 0.3		INSTRUCTION SHEET	mPGA47X SOCKET LEAD FREE BALL		
3 PLC ± 0.3		WEIGHT	SIZE	CAGE CODE	DRAWING NO
4 PLC ± 0.3			A3	00779	1674770
ANGLES ± 3°		CUSTOMER DRAWING	RESTRICTED TO		
MATERIAL	FINISH	SCALE		SHEET	REV
△		NTS		2 of 3	K2



4

3


2

1

THIS DRAWING IS UNPUBLISHED. RELEASED FOR PUBLICATION 2001.
 © COPYRIGHT 2001 By - ALL RIGHTS RESERVED.

LOC	DIST	REVISIONS				
P	LTR	DESCRIPTION	DATE	DWN	APVD	
-	-	SEE SHEET 1	-	-	-	

QTY	DESCRIPTION	UNIT	WEIGHT (kg)	DIMENSION C	DIMENSION B	DIMENSION A	SOCKET QTY PER TRAY OR REEL	SOCKET TYPE / VIS REF. ONLY	SALEABLE PART NO.	NAME
160	7-1674772-2		1.88	1400	560	56	160	7-1674772-2	7-1674770-2	478B TYPE 180 DEGREE ROTATE
160	6-1674772-2		1.88	1400	560	56	160	6-1674772-2	6-1674770-2	478A TYPE 180 DEGREE ROTATE
160	5-1674772-2		1.88	1400	560	56	160	5-1674772-2	5-1674770-2	479M STD 180 DEGREE ROTATE
30	4-1674772-4		0.354			30	30	4-1674772-4	4-1674770-4	479M WO/PEG
30	4-1674772-3		0.312			30	30	4-1674772-3	4-1674770-3	479M W/PEG
30	4-1674772-2		0.354			30	30	4-1674772-2	4-1674770-2	479M W/PEG
30	4-1674772-1		0.312			30	30	4-1674772-1	4-1674770-1	479M W/PEG
30	3-1674772-3		0.354			30	30	3-1674772-3	3-1674770-3	478C TYPE
30	3-1674772-2		0.312			30	30	3-1674772-2	3-1674770-2	478C TYPE
30	3-1674772-2		1.88	1400	560	56	160	3-1674772-2	3-1674770-2	478B STD. BLACK
30	2-1674772-9		0.354			30	30	2-1674772-9	2-1674770-9	478B STD. BLACK
30	2-1674772-6		0.354			30	30	2-1674772-6	2-1674770-6	478B STD. BLACK
30	2-1674772-4		0.312			30	30	2-1674772-4	2-1674770-4	478B STD. Cover: PURPLE
160	2-1674772-4		1.88	1400	560	56	160	2-1674772-4	2-1674770-4	478B STD. Cover: PURPLE
160	2-1674772-2		1.88	1400	560	56	160	2-1674772-2	2-1674770-2	478B TYPE
160	2-1674772-1		1.88	1400	560	56	160	2-1674772-1	2-1674770-1	478B TYPE
160	1-1674772-5		2.13	1400	560	56	160	1-1674772-5	1-1674770-5	478A STD. Cover: YELLOW
160	1-1674772-4		1.88	1400	560	56	160	1-1674772-4	4-1674770-6	478A STD. Cover: YELLOW
30	1-1674772-2		0.312			30	30	1-1674772-2	1-1674770-5	478A TYPE
160	1-1674772-2		1.88	1400	560	56	160	1-1674772-2	1-1674770-2	478A TYPE
30	4-1674772-5		0.312			30	30	4-1674772-5	4-1674770-5	479M STANDARD
30	1674772-3		0.354			30	30	1674772-3	1674770-9	479M STANDARD
30	1674772-2		0.312			30	30	1674772-2	1674770-8	479M STANDARD
30	1674772-1		0.312			30	30	1674772-1	1674770-7	479M STANDARD
200	1674772-3		2.42	1200	480	48	200	1674772-3	1674770-6	479M STANDARD
200	1674772-2		2.14	1200	480	48	200	1674772-2	1674770-5	479M STANDARD
200	1674772-1		2.14	1200	480	48	200	1674772-1	1674770-4	479M STANDARD
160	1674772-3		2.13	1400	560	56	160	1674772-3	1674770-3	479M STANDARD
160	1674772-2		1.88	1400	560	56	160	1674772-2	1674770-2	479M STANDARD
160	1674772-1		1.88	1400	560	56	160	1674772-1	1674770-1	479M STANDARD
160	1674772-1		1.88	1400	560	56	160	1674772-1	1674770-1	479M STANDARD
	PACKING	REMARKS	WEIGHT(kg)	C	B	A	SOCKET QTY PER TRAY OR REEL	SOCKET TYPE / VIS REF. ONLY	SALEABLE PART NO.	NAME

THIS DRAWING IS A CONTROLLED DOCUMENT.		DWN	 TE Connectivity	
DIMENSIONS: MM		CHK		
TOLERANCES UNLESS OTHERWISE SPECIFIED:		APVD	NAME	
0 PLC ± 0.3		PRODUCT SPEC		
1 PLC ± 0.3		INSTRUCTION SHEET		
2 PLC ± 0.3		SIZE	CAGE CODE	DRAWING NO
3 PLC ± 0.3		A3	00779	C-1674770
4 PLC ANGLES ± 0.3		RESTRICTED TO		
FINISH ± 0.3		WEIGHT		
MATERIAL		CUSTOMER DRAWING		
		SCALE	SHEET	REV
		NTS	3 of 3	K2