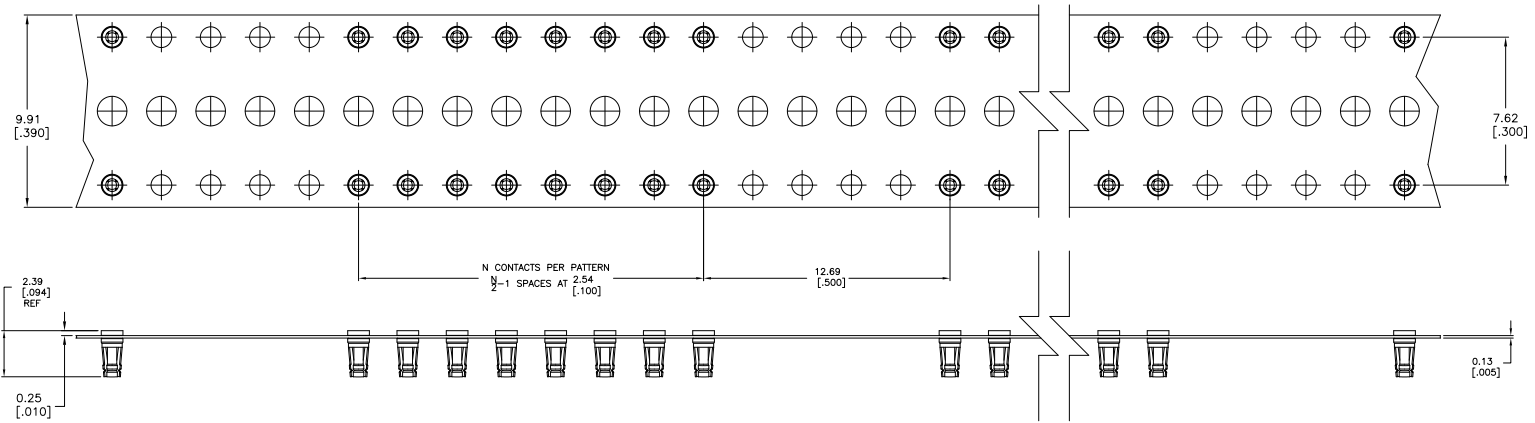


THIS DRAWING IS UNPUBLISHED  
 UNLESS INDICATED OTHERWISE  
 ALL RIGHTS RESERVED

REV	DATE	DESCRIPTION	BY	APP
0		PROPOSED		
01	REVISED PER ECO-09-020935		07SEP09	KK AEG



2-1437514-6 SHOWN  
 7.62 [0.300] ROW-TO-ROW  $\downarrow$  SPACING

- △ CONTACTS: BERYLLIUM COPPER PER ATSM B197
- △ CARRIER STRIP: POLYESTER FILM
- △ SPACER: KRAFT PAPER
- △ REEL: CARBOARD
- △ 0.000635 [0.00025] MIN GOLD OVER 0.00127 [0.00050] MIN NICKEL.
- △ 0.002032 [0.00080] MIN TIN-LEAD OVER 0.001905 [0.00075] MIN COPPER.
- △ REFER TO TYCO CUSTOMER DRAWING 147699 FOR THE INDIVIDUAL SOCKET DIMENSIONS, THE P.C. BOARD MOUNTING REQUIREMENTS, AND LEAD SIZES ACCEPTED.
- △ OBSOLETE
- △ OBSOLETE PARTS: OBSOLETE CIS STREAMLINING PER D.RENAUD/D.SINISI

ROW-TO-ROW & SPACING	QUANTITY OF CONTACTS/REEL	N° CONTACTS PER PATTERN	FINISH	TYCO PART NO. CONTACTS REF	ALIGAT PART NO. REEL ASSEMBLY REF	TYCO PART NO. REEL ASSEMBLY
15.24 [0.600]	5000	40	△	6-1437514-7	322-HCSSP3-640	147841-3
	5000	40	△	6-1437514-6	322-HCSSP2-640	3-1437514-5
	5004	36	△	6-1437514-7	322-HCSSP3-636	147840-3
	5004	36	△	6-1437514-6	322-HCSSP2-636	147840-2
	4992	32	△	6-1437514-7	322-HCSSP3-632	3-1437505-8
	4992	32	△	6-1437514-6	322-HCSSP2-632	3-1437505-4
	5012	28	△	6-1437514-7	322-HCSSP3-628	4-1437514-2
	5012	28	△	6-1437514-6	322-HCSSP2-628	3-1437514-3
	4992	24	△	6-1437514-7	322-HCSSP3-624	4-1437514-1
	4992	24	△	6-1437514-6	322-HCSSP2-624	3-1437514-2
10.14 [0.400]	5000	5000	△	6-1437514-7	322-HCSSP3-600	4-1437514-0
	5000	5000	△	6-1437514-6	322-HCSSP2-600	3-1437514-1
	4992	24	△	6-1437514-7	322-HCSSP3-424	147839-3
	4992	24	△	6-1437514-6	322-HCSSP2-424	3-1437505-5
	4994	22	△	6-1437514-7	322-HCSSP3-422	147838-3
	4994	22	△	6-1437514-6	322-HCSSP2-422	3-1437514-0
	5000	5000	△	6-1437514-7	322-HCSSP3-400	147837-3
	5000	5000	△	6-1437514-6	322-HCSSP2-400	2-1437514-9
	5000	20	△	6-1437514-7	322-HCSSP3-320	3-1437514-0
	5000	20	△	6-1437514-6	322-HCSSP2-320	2-1437514-8
7.62 [0.300]	5004	18	△	6-1437514-7	322-HCSSP3-318	147836-3
	5004	18	△	6-1437514-6	322-HCSSP2-318	2-1437514-7
	5008	16	△	6-1437514-7	322-HCSSP3-316	3-1437505-1
	5008	16	△	6-1437514-6	322-HCSSP2-316	2-1437514-6
	4998	14	△	6-1437514-7	322-HCSSP3-314	1447270-4
	4998	14	△	6-1437514-6	322-HCSSP2-314	2-1437514-5
	5000	8	△	6-1437514-7	322-HCSSP3-308	3-1437514-8
	5000	8	△	6-1437514-6	322-HCSSP2-308	2-1437514-4
	5000	5000	△	6-1437514-7	322-HCSSP3-300	3-1437514-7
	5000	5000	△	6-1437514-6	322-HCSSP2-300	1-1437514-3

20SEP2001 8:25am AMP34723

THIS DRAWING IS A CONTROLLED DOCUMENT.

INCHES: 1/16, 1/8, 3/16, 1/4, 3/8, 1/2, 5/8, 3/4, 7/8, 1, 1 1/8, 1 1/4, 1 1/2, 1 3/4, 1 7/8, 2, 2 1/8, 2 1/4, 2 1/2, 2 3/4, 3, 3 1/8, 3 1/4, 3 1/2, 3 3/4, 4, 4 1/8, 4 1/4, 4 1/2, 4 3/4, 5, 5 1/8, 5 1/4, 5 1/2, 5 3/4, 6, 6 1/8, 6 1/4, 6 1/2, 6 3/4, 7, 7 1/8, 7 1/4, 7 1/2, 7 3/4, 8, 8 1/8, 8 1/4, 8 1/2, 8 3/4, 9, 9 1/8, 9 1/4, 9 1/2, 9 3/4, 10, 10 1/8, 10 1/4, 10 1/2, 10 3/4, 11, 11 1/8, 11 1/4, 11 1/2, 11 3/4, 12, 12 1/8, 12 1/4, 12 1/2, 12 3/4, 13, 13 1/8, 13 1/4, 13 1/2, 13 3/4, 14, 14 1/8, 14 1/4, 14 1/2, 14 3/4, 15, 15 1/8, 15 1/4, 15 1/2, 15 3/4, 16, 16 1/8, 16 1/4, 16 1/2, 16 3/4, 17, 17 1/8, 17 1/4, 17 1/2, 17 3/4, 18, 18 1/8, 18 1/4, 18 1/2, 18 3/4, 19, 19 1/8, 19 1/4, 19 1/2, 19 3/4, 20.

DATE: 108-1979

SIZE: 114-13033

SEE TABLE

TYCO ELECTRONICS CORPORATION  
 HARRISBURG, PA 17105

HOLITE CONTACT REEL ASSEMBLY  
 DIP SOCKET PATTERNS

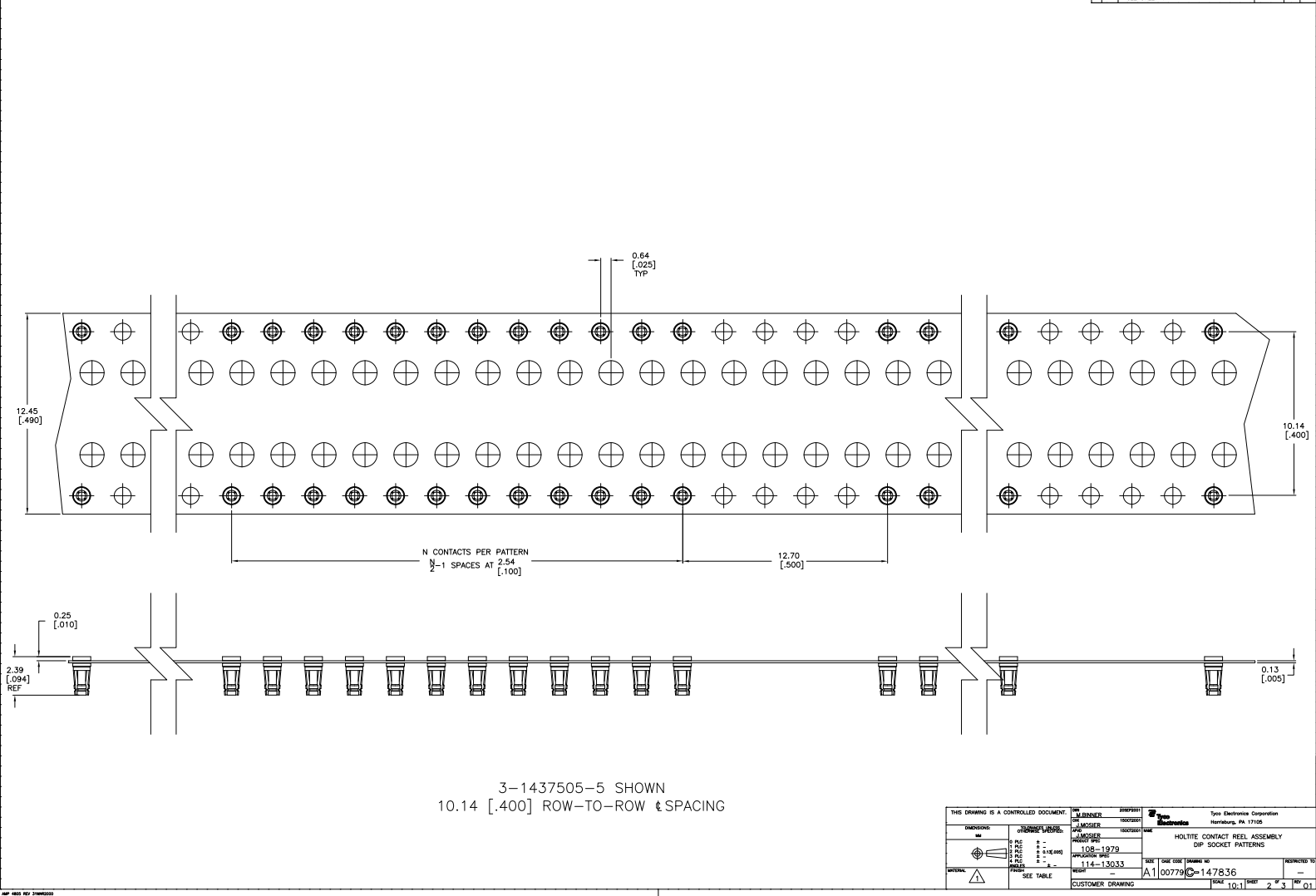
DATE: 100779

SIZE: 147836

CUSTOMER DRAWING

THIS DRAWING IS UNPUBLISHED  
 UNLESS NOTED OTHERWISE  
 © 2005 BY TYS ELECTRONICS CORPORATION ALL RIGHTS RESERVED

REV	DATE	DESCRIPTION	BY	CHK	APP
AD	00	SEE SHEET 1			



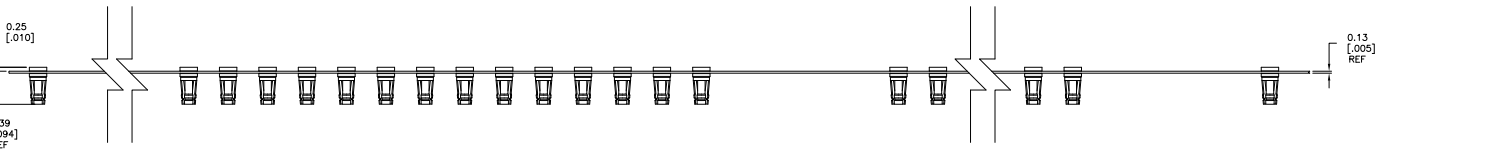
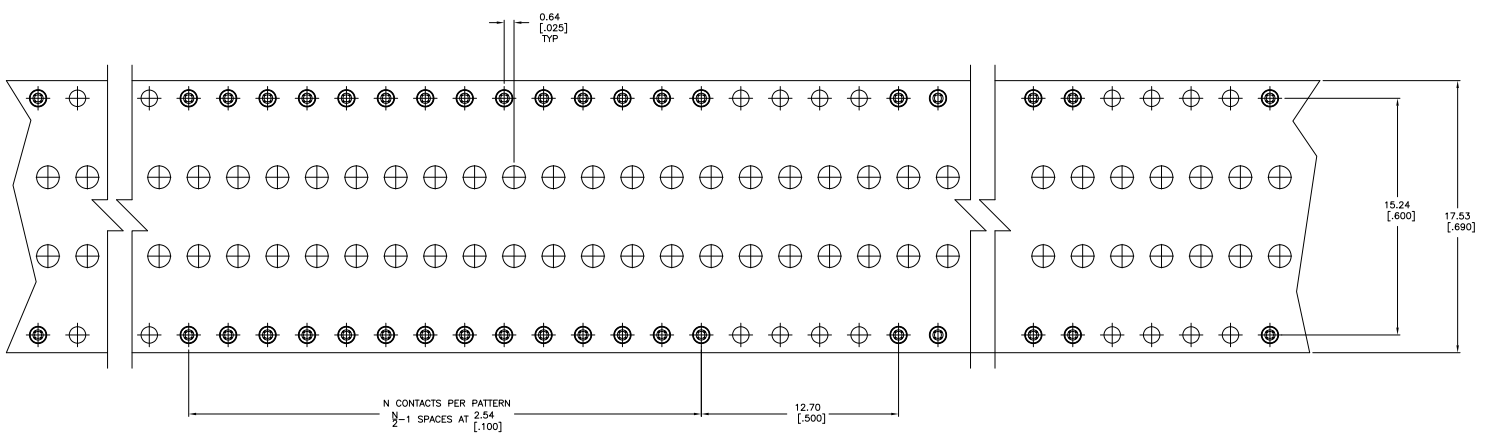
3-1437505-5 SHOWN  
 10.14 [.400] ROW-TO-ROW & SPACING

THIS DRAWING IS A CONTROLLED DOCUMENT.		REV 00	REV 00	REV 00	REV 00
DATE	BY	DATE	BY	DATE	BY
114-13033	108-1979	114-13033	108-1979	114-13033	108-1979
SEE TABLE	SEE TABLE	SEE TABLE	SEE TABLE	SEE TABLE	SEE TABLE
CUSTOMER DRAWING		CUSTOMER DRAWING		CUSTOMER DRAWING	
DATE: 10-11		REV: 2		REV: 3	

AMP 440 Rev 2/2005  
 20SEP2001 8:25am AMP34723

THIS DRAWING IS UNPUBLISHED. ALL RIGHTS RESERVED.  
 © 2008 Tyco Electronics Corporation

REV	DATE	DESCRIPTION	BY	CHKD
AD	00	SEE SHEET 1		



3-1437514-3 SHOWN  
 15.24 [.600] ROW-TO-ROW  $\epsilon$  SPACING

THIS DRAWING IS A CONTROLLED DOCUMENT.		REVISED BY	REVISED DATE	REVISED DESCRIPTION
DRAWN BY		DESIGNED BY	DATE	DESCRIPTION
CHECKED BY		APPROVED BY	DATE	DESCRIPTION
DATE		DATE	DATE	DATE
DRAWING NO.		REVISED NO.	REVISED DATE	REVISED DESCRIPTION
114-13033		108-1979	114-13033	108-1979
SEE TABLE		SEE TABLE	SEE TABLE	SEE TABLE
CUSTOMER DRAWING		DATE	BY	REVISED TO
A1		00779	147836	
SIZE		SCALE	SHEET	TOTAL SHEETS
6.1			3	3

AMP 440 Rev 2/2008  
 20SEP2001 8:25am AMP34723