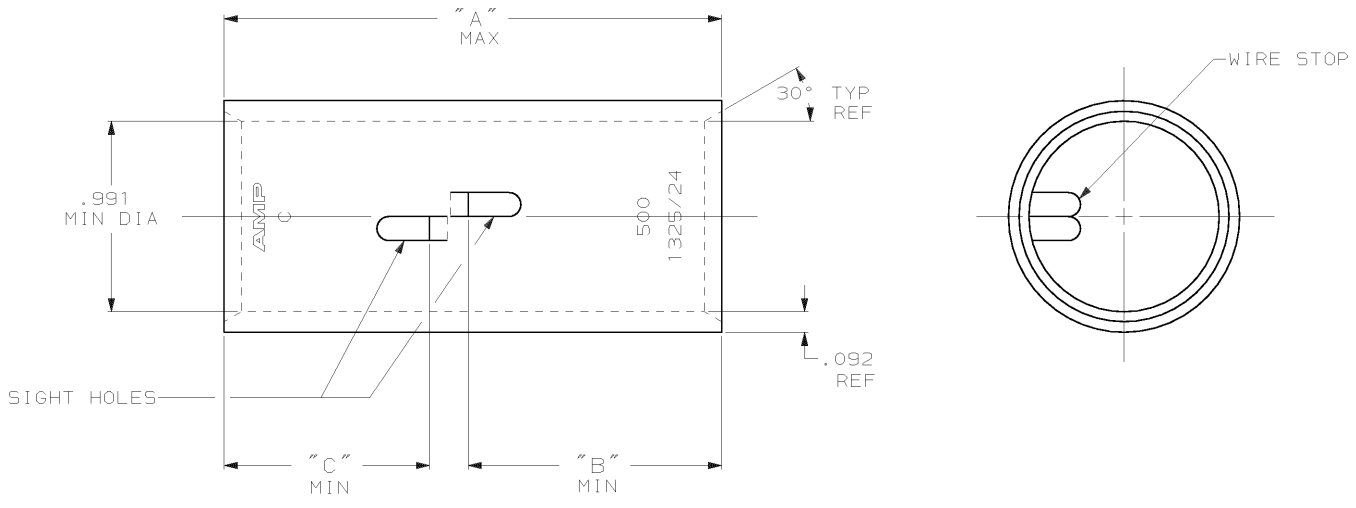


DRAWING MADE IN THIRD ANGLE PROJECTION

THIS DRAWING IS UNPUBLISHED. RELEASED FOR PUBLICATION, 19
 © COPYRIGHT 19 BY AMP INCORPORATED. ALL INTERNATIONAL RIGHTS RESERVED.

LOC	DIST	REVISIONS				
G	86	ZONE	LTR	DESCRIPTION	DATE	APPD
		P		REV PER 063A-0637-01	03OCT02	JR/MS



- 1 TIN PL .000150 MIN THK PER ASTM B 545
- 2 PART NO: 324466; .243 LB.
PART NO: 1-324466-0; .243 LB.
PART NO: 2-324466-1; .243 LB.
PART NO: 2-324466-2; .269 LB.
- 3 RED COLOR CODE
- 4 CLEANED, UNPLATED

OBSOLETE		1.07	1.32	2.64	△	450-550 MCM	COPPER ASTM-B-75 ANNEALED	2-324466-2	
		1.07	1.07	2.41	△			1-324466-0	
"C"	"B"	"A"	FINISH	WIRE RANGE	MATERIAL			PART NO	
DO NOT SCALE PRINT. UNLESS SPECIFIED DIMENSIONS IN INCHES TOLERANCES ON: 1. PLC DEC ± - 2. PLC DEC ± - 3. PLC DEC ± - ANGLES ± -					DR 4/24/89 DK SCHULTZ	AMP INCORPORATED Harrisburg, Pa. 17105			
MATERIAL SEE TABLE					APPD 11/8/89 WJ WICKROTH	NAME SPLICE, BUTT, AMPPOWER WIRE SIZE: 500 MCM			
FINISH SEE TABLE					APPD 11/8/89 TL SHUTTER	PRODUCT SPEC	SIZE B	FSCM NO 00779	DRAWING NO 324466
					APPLICATION SPEC	SCALE 2:1	SHEET 1 OF 1		
					WEIGHT △	CUSTOMER DRAWING			

AMP 1470-15 REV 3-87
 17-JUN-97 11:06:05 amp26463 /usr/dsp1123/dsp1123/uc/ampower/uc/spl1.c

CUSTOMER DRAWING