

4

3

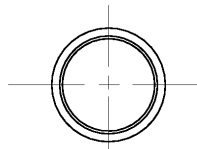
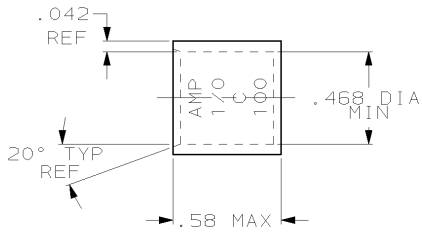
2

1

THIS DRAWING IS UNPUBLISHED. RELEASED FOR PUBLICATION .19
 © COPYRIGHT 19 BY AMP INCORPORATED. ALL RIGHTS RESERVED.

LOC	DIST	REVISIONS			
P	LTR	DESCRIPTION	DATE	DWN	APVD
G	86	D	REV PER 063A-0637-01	03OCT02	JR MS

- ① TIN PLATE 0.00381[.000150] MIN THK PER MIL-T-10727
- ② CLEANED



OBSOLETE	①	1-324443-0
	②	324443
FINISH	AMP PART NUMBER	

THIS DRAWING IS A CONTROLLED DOCUMENT FOR AMP INCORPORATED. IT IS SUBJECT TO CHANGE AND THE CONTROLLING ENGINEERING ORGANIZATION SHOULD BE CONTACTED FOR THE LATEST REVISION.		DWN DK SCHRUM 01.JUL.96	AMP Incorporated Harrisburg, PA 17105-3608													
DIMENSIONS: mm (INCHES)		CHK WJ VOCKROTH 02.JUL.96	NAME WIRE SPLICE, PARALLEL, AMPOWER, WIRE SIZE: 1/0 AWG													
TOLERANCES UNLESS OTHERWISE SPECIFIED:		APVD JL MECKLEY 02.JUL.96	DRAWING NO A3 00779 ③-324443													
<table border="1"> <tr><td>0 PLC</td><td>±</td></tr> <tr><td>1 PLC</td><td>±</td></tr> <tr><td>2 PLC</td><td>±</td></tr> <tr><td>3 PLC</td><td>±</td></tr> <tr><td>4 PLC</td><td>±</td></tr> <tr><td>ANGLES</td><td>±</td></tr> </table>		0 PLC	±	1 PLC	±	2 PLC	±	3 PLC	±	4 PLC	±	ANGLES	±	PRODUCT SPEC --	SIZE A3	
0 PLC	±															
1 PLC	±															
2 PLC	±															
3 PLC	±															
4 PLC	±															
ANGLES	±															
MATERIAL COPPER PER ASTM B-75 ANNEALED	FINISH SEE TABLE	APPLICATION SPEC --	WEIGHT .013 lbs	SCALE 2:1												
CUSTOMER DRAWING		SHEET 1 OF 1 REV D														

AMP 1470-19 REV 09MAY94

01-JUL-96 09:58:56 amp26463 /Files/dept1123/dwg1123/u.ampower/u.splIce