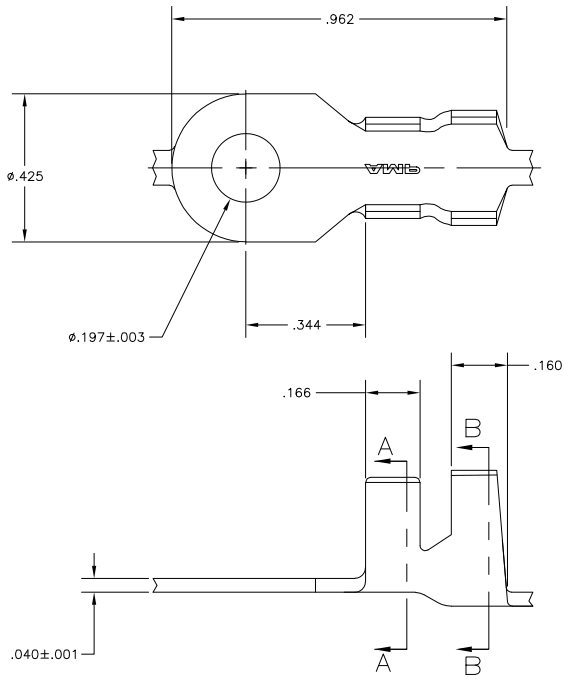
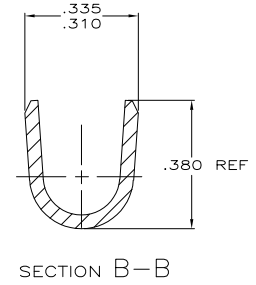
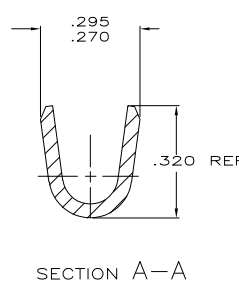


THIS DRAWING IS UNPUBLISHED. RELEASED FOR PUBLICATION
 © COPYRIGHT BY TYCO ELECTRONICS CORPORATION. ALL RIGHTS RESERVED.

LOC	DIST	REVISIONS		
F	LN	DESCRIPTION	DATE	BY
AF	50	E1	REVISED PER ECR-06-002775	15FEB06 HMR DD



- 1 CONTINUOUS STRIP ON REEL.
- 2 WIRE RANGE: #10-#8 AWG.
- 3 INSULATION RANGE: .190-.230 DIA.
- 4 .000080 MIN BRIGHT TIN PLATE OVER .000050 MIN NICKEL UNDERPLATE.
- 5 .000080 MIN TIN PLATE.



-	640249-4
5	640249-3
-	-
4	640249-1
FINISH	PART NUMBER

THIS DRAWING IS A CONTROLLED DOCUMENT.		DRW MICHAEL S. FEHER 02MAY2003	Tyco Electronics Corporation Harrisburg, PA 17105-3608	
DIMENSIONS: INCHES		CHK DONALD F. DECKER 02MAY2003	NAME	
TOLERANCES UNLESS OTHERWISE SPECIFIED:		APP'D DONALD F. DECKER 02MAY2003	#10 STUD, TONGUE, RING	
0 PLC ± .005		PRODUCT SPEC	APPLICATION SPEC	RESTRICTED TO
1 PLC ± .010		WEIGHT	SIZE CAGE CODE DRAWING NO	
2 PLC ± .015		FINISH	A2 00779 C-640249	1 of 1
3 PLC ± .020		SEE TABLE	CUSTOMER DRAWING	REV E1
4 PLC ± .030			SCALE 5:1	SHEET 1 of 1
ANGLES ± .5°				