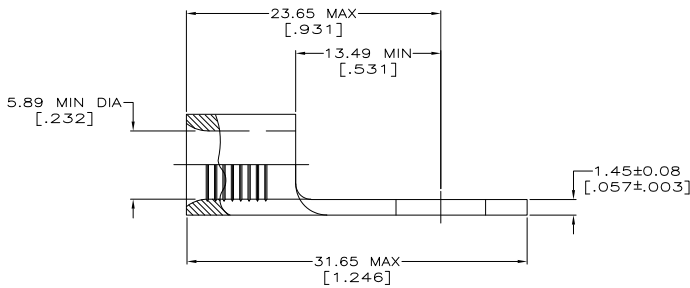
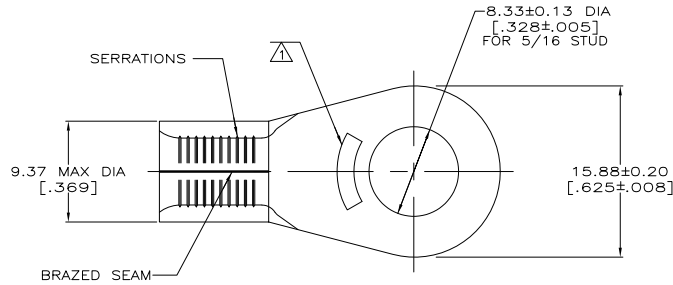


THE DRAWING IS UNPUBLISHED. RELEASED FOR PUBLICATION. ALL RIGHTS RESERVED.

REV	DATE	DESCRIPTION	BY	APPD
1	11MAR11	REVISED PER ECO-11-004820	RK	HMR



<b>AMP</b> WIRE RANGE	Listed FILE E13288
6 AWG SOLID OR STRANDED	6 AWG STRANDED
<b>LR7189</b> Certified	MILITARY P/N AND CLASS
6 AWG SOLID OR STRANDED	MS 20659-131 CLASS 2 P/N 33466 & 2-33466-3 ONLY

- 1 STAMP AMP 6\* APPROX AS SHOWN
- 2 0.00254 [.000100] MIN TIN PLATE PER ASTM B-545.
- 3 GOLD PLATE 0.00127 [.000050] MIN THK PER ASTM B-488, TYPE 2, GRADE C OVER NICKEL PLATE 0.00076 [.000030] MIN THK PER QQ-N-290.
- 4 SUPERSEDED BY 8-33466-3
- 5 COPPER PER ASTM B-152, ANNEALED

<b>AMP INCORPORATED CUSTOMER SERVICE SYSTEMS</b>		MAX RECOMMENDED OPERATING TEMPERATURE: 170°C
FOR ADDITIONAL PRODUCT INFORMATION OR COPIES OF DRAWINGS AND TECHNICAL DOCUMENTS	PRODUCT INFORMATION CENTER 1-800-522-6752	VOLTAGE RATING: N/A
FOR APPLICATION	TOOLING ASSISTANCE CENTER 1-800-722-1111	CIRCULAR MIL AREA: 10.5-16.8mm <sup>2</sup> [20,800-33,100] SOLID OR STRANDED
FOR ORDER ENTRY	1-800-526-5142	THIS DRAWING IS A CONTROLLED DOCUMENT FOR AMP INCORPORATED. IT IS SUBJECT TO CHANGE AND THE CONTROLLING ENGINEERING ORGANIZATION SHOULD BE CONTACTED FOR THE LATEST REVISION.

FINISH	QTY	PACKAGE TYPE	PART NO
1	25	LOOSE PIECE, BAG	8-33466-5/4
2	25	LOOSE PIECE, BOX	8-33466-3
3	500	LOOSE PIECE, BOX	2-33466-4
4	750	33466 ON TAPE	2-33466-3
5	----	LOOSE PIECE	2-33466-1
6	----	LOOSE PIECE	33466

THIS DRAWING IS A CONTROLLED DOCUMENT.		BY TA BRINKMAN 3-24-93	DATE 3-24-93	APPROVED DA PATTERSON 3-24-93	BY JL MECKLEY 3-24-93	DATE 3-24-93	SCALE A2	QTY 00779	DRAWING NO C-33466	RESTRICTED TO N2	
DIMENSIONS: mm [INCHES]		TOLERANCES UNLESS OTHERWISE SPECIFIED:		PRODUCT SPEC		APPLICATION SPEC		WEIGHT		CUSTOMER DRAWING	
MATERIAL		FINISH		SIZE		CASE CODE		SHEET		1 of 1	

1471-9 (5/11)

33466