

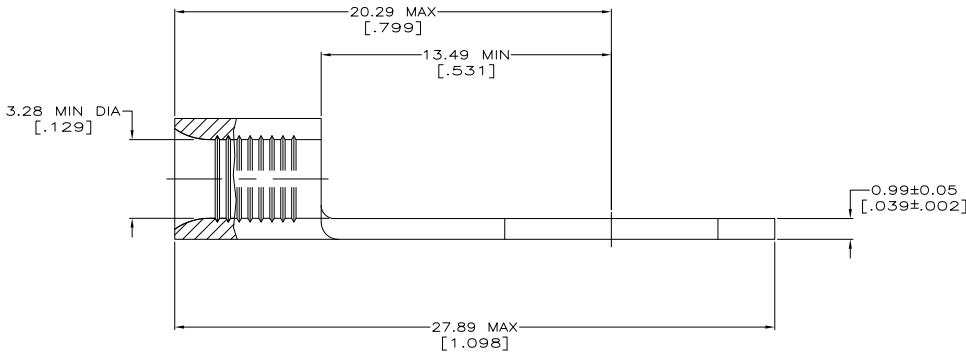
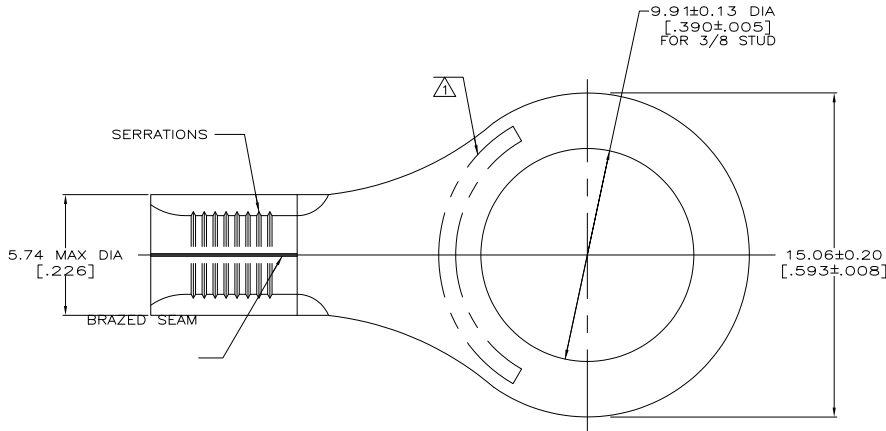
THE DRAWING IS UNPUBLISHED. RELEASED FOR PUBLICATION. ALL RIGHTS RESERVED.

LOC	DATE	REVISIONS	DATE	BY	APP
G	14	H1	REVISED PER ECO-11-005027	11MAR11	RK HMR

METRIC
DIMENSIONS LISTED IN mm [INCHES]

AMP WIRE RANGE 12-10 AWG SOLID OR STRANDED	E13288 Listed 12-10 AWG STRANDED
LR7189 Certified 12-10 AWG SOLID OR STRANDED	MILITARY P/N AND CLASS MS20659-128 CLASS 1 & 2 P/N 33220 ONLY

△ STAMP AMP 12-10* APPROX AS SHOWN



AMP INCORPORATED CUSTOMER SERVICE SYSTEMS		MAX RECOMMENDED OPERATING TEMPERATURE: 170° C MAX
FOR ADDITIONAL PRODUCT INFORMATION OR COPIES OF DRAWINGS AND TECHNICAL DOCUMENTS	PRODUCT INFORMATION CENTER 1-800-522-6752	VOLTAGE RATING: NOT APPLICABLE
FOR APPLICATION TOOLING INFORMATION	TOOLING ASSISTANCE CENTER 1-800-722-1111	WIRE CROSS SECTIONAL AREA RANGE: 2.62-6.64mm ² [5,180-13,100] CIR MILS SOLID OR STRANDED
FOR ORDER ENTRY	1-800-526-5142	THIS DRAWING IS A CONTROLLED DOCUMENT FOR AMP INCORPORATED. IT IS SUBJECT TO CHANGE AND THE CONTROLLING ENGINEERING ORGANIZATION SHOULD BE CONTACTED FOR THE LATEST REVISION.

50	LOOSE PIECE, SPCL BOX	8-33220-5
50	LOOSE PIECE, BOX	8-33220-2
1000	TAPE MOUNTED	1-33220-2
-	-	33220
QTY	PACKAGE TYPE	PART NO

THIS DRAWING IS A CONTROLLED DOCUMENT.		BY TA BRINKMAN 3-17-93	DATE 3-17-93	TE TE Connectivity
DRAWING NO A200779		CHK DA PATTERSON 3-17-93	DATE 3-17-93	
DIMENSIONS: mm[INCHES]		APPROVED DE MILLER 3-17-93	DATE 3-17-93	PRODUCT SPEC
MATERIAL COPPER PER ASTM B-152 ANNEALED		FINISH 0.0025[.000100] MIN THK PER MIL-C-10722	WEIGHT	APPLICATION SPEC
SIZE A2		CAGE CODE 00779	DRAWING NO 33220	RESTRICTED TO
CUSTOMER DRAWING		SCALE 3:1	SHEET 1 of 1	REV H1

141-9 (5/11)

33220