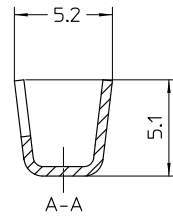
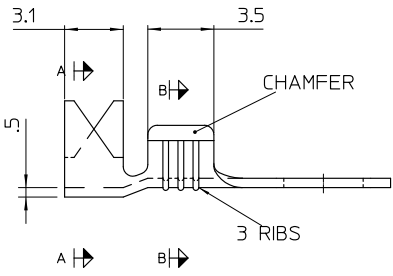
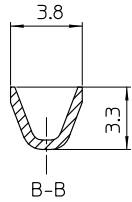
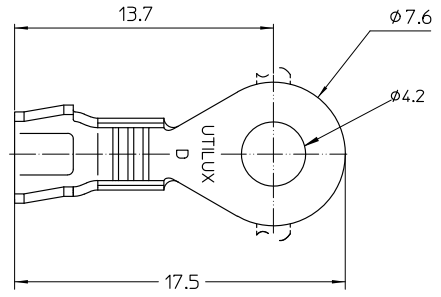


THIS DRAWING IS UNPUBLISHED. RELEASED FOR PUBLICATION
 © COPYRIGHT BY TYCO ELECTRONICS CORPORATION. ALL RIGHTS RESERVED.

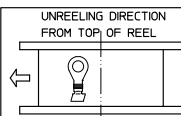
LOC		DIST		REVISIONS			
P	LTR	DESCRIPTION		DATE	DWN	APVD	
01		ECR-05-008429 (REEL DIRECTION CORRECTED)		12/8/05	HT	WR	



BRASS PRE-TIN	TERMINAL, EYE-TYPE H3931ET	1-1627170-2
NICKEL SILVER	TERMINAL, EYE-TYPE H3931B	1-1627170-1
BRASS	TERMINAL, EYE-TYPE H3931	1-1627170-0
MATERIAL	DESCRIPTION	PART No.

NOTES:
 1. WIRE RANGE
 CONDUCTOR: 0.5mm² - 1.5mm²
 INSULATION DIA: 2.2mm - 3.2mm

THE INFORMATION IS CONFIDENTIAL AND PROPRIETARY TO TYCO ELECTRONICS CORPORATION AND IS NOT TO BE RELEASED TO ANYONE OTHER THAN TYCO ELECTRONICS CORPORATION, HARRISBURG, PENNSYLVANIA, USA.



THIS DRAWING IS A CONTROLLED DOCUMENT.	
ALL DIMENSIONS IN mm	TOLERANCES UNLESS OTHERWISE SPECIFIED:
	DIMENSION (mm) TOLERANCE (+/-mm)
	LESS THAN 10 0.4
	OVER 10 TO 30 0.5
	OVER 30 TO 80 0.7
	OVER 80 TO 250 1.0
	ANGLES 42°
MATERIAL	FINISH
-	-

DWN: T. THAI 1.7.05	Tyco Electronics Corporation AUSTRALIA
CHK: W. RIEDE 1.7.05	
APVD: W. RIEDE 2.7.05	
PRODUCT SPEC:	NAME: TERMINAL, EYE-TYPE
APPLICATION SPEC:	SIZE: A3
WEIGHT:	CAGE CODE: -
DRAWING NO: 1627170	
CUSTOMER DRAWING	
SCALE: 5:1	SHEET 1 OF 1
REV 01	RESTRICTED TO