

4

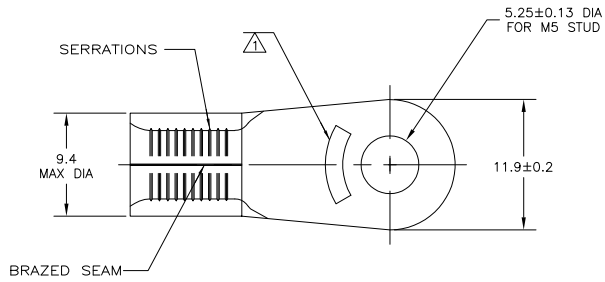
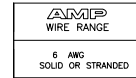
3

2

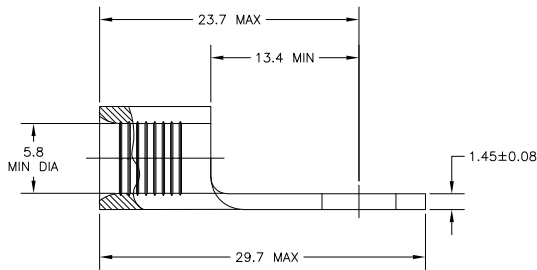
1

THIS DRAWING IS UNPUBLISHED. RELEASED FOR PUBLICATION  
 © COPYRIGHT BY TYCO ELECTRONICS CORPORATION. ALL RIGHTS RESERVED.

LOC	DIST	P	LTR	DESCRIPTION	DATE	MIN	APD
G	14	A		REDRAWN PER ECR 05-010490		ORSEPOS	JR TM



- 1 STAMP AMP 6\* APPROX AS SHOWN
- 2 COPPER PER ASTM B-152, ANNEALED
- 3 MAX OPERATING TEMP IS 170°C
- 4 WIRE CROSS SECTIONAL AREA RANGE:  
10.5-16.8mm<sup>2</sup> [20,800-33,100] CIR MILS  
SOLID OR STRANDED WIRE



LOOSE PIECE	100	TIN PLATE 0.00254[.000100] MIN THK PER MIL-T-10727	130552
PACKAGE TYPE	QTY	FINISH	PART NO.

THIS DRAWING IS A CONTROLLED DOCUMENT.		DR: J.R. RUTH	ORSEPOS	Tyco Electronics Corporation
DIMENSIONS: mm INCHES		CHK: T. MICHIELUCCI	ORSEPOS	Harrisburg, Pa 17105-3608
TOLERANCES UNLESS OTHERWISE SPECIFIED:		APPD: T. MICHIELUCCI	ORSEPOS	AMP
0 PLC	±	PROJECT SPEC		TERMINAL, RING TONGUE, SOLISTRAND
1 PLC	±	APPLICATION SPEC		
2 PLC	±	WEIGHT		
3 PLC	±	SIZE	0200779	130552
4 PLC	±	RESTRICTED TO		
ANGLES	±			
MATERIAL	SEE TABLE	CUSTOMER DRAWING	SCALE: 4:1	SHEET 1 OF 1 REV A

AMP 1471-9 REV 31MM2000

130552

A