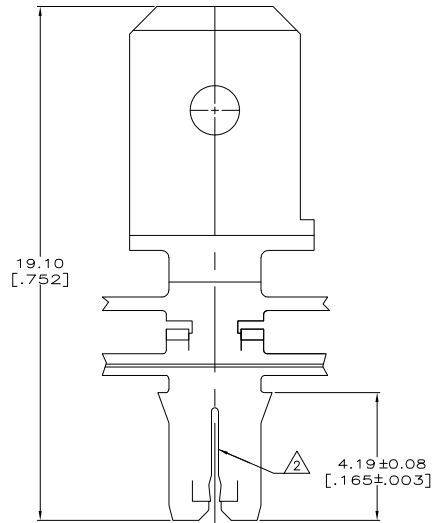
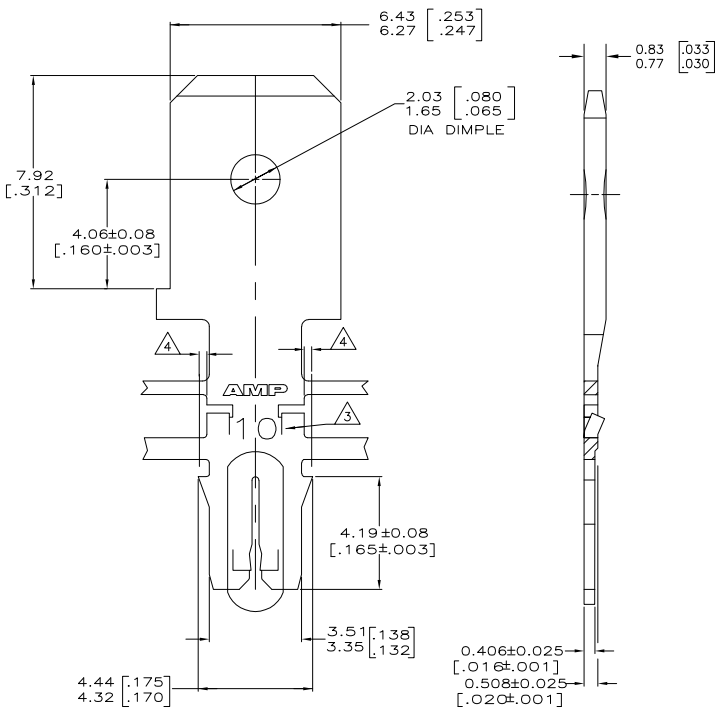


THIS DRAWING IS UNPUBLISHED. RELEASED FOR PUBLICATION. BY TYCO ELECTRONICS CORPORATION. ALL RIGHTS RESERVED.

LOC	QST	REVISIONS			
AF	50	TR	LR	DATE	DRN
		G		22SEP06	HMR KR
		DESCRIPTION			
		REVISED PER ECR-06-010423			

- 1 CONTINUOUS STRIP ON REELS WITH TERMINALS LOCATED ON 8.38 ± 0.08 [.330 ± .003] CENTERS
- 2 SLOT ACCEPTS $0.36-0.51$ mm [#27-#24] AWG COPPER MAGNET WIRE. TWO WIRES OF THE SAME SIZE MAX PER SLOT
- 3 IDENTIFICATION NUMBER 10 FOR THE MAGNET WIRE SLOT SIZE
- 4 0.25 [.010] MAX CARRIER CUT-OFF TABS
- 5 PRE-PRODUCTION - F.A.S.R. REQUIRED.



OBSOLETE	082 PRE-MILLED BRASS	5	63742-2
	AM PRE-MILLED BRASS		63742-1

THIS DRAWING IS A CONTROLLED DOCUMENT.		DRN	L.A. MAYER	9-1-83	Tyco Electronics Corporation Harrisburg, PA 17105-3608
		DRN	M.S. FEHER	9-1-83	
DIMENSIONS: mm [INCHES]		APPRO	A. HUNT III	9-1-83	MAG-MATE™ Slim Line
TOLERANCES UNLESS OTHERWISE SPECIFIED:		PRODUCT SPEC	108-1484	APPLICATION SPEC	
MATERIAL		FINISH	0.002032 [.000080] MIN TIN PLATE	WEIGHT	114-2140
SEE TABLE				SIZE	A2
				CAGE CODE	00779
				DRAWING NO	63742
				RESTRICTED TO	
				CUSTOMER DRAWING	
				SCALE	10:1
				SHEET	1 of 1
				REV	G

AMP 1471-B REV 31MMR2000

63742

A