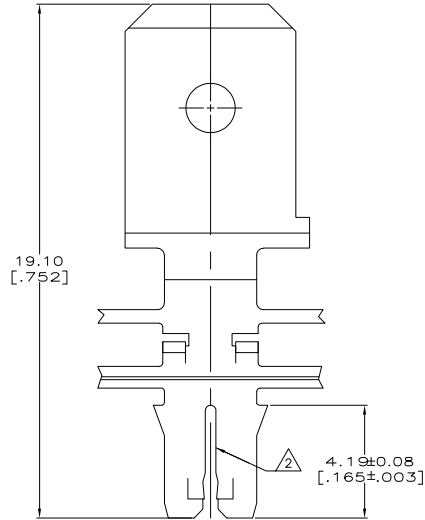
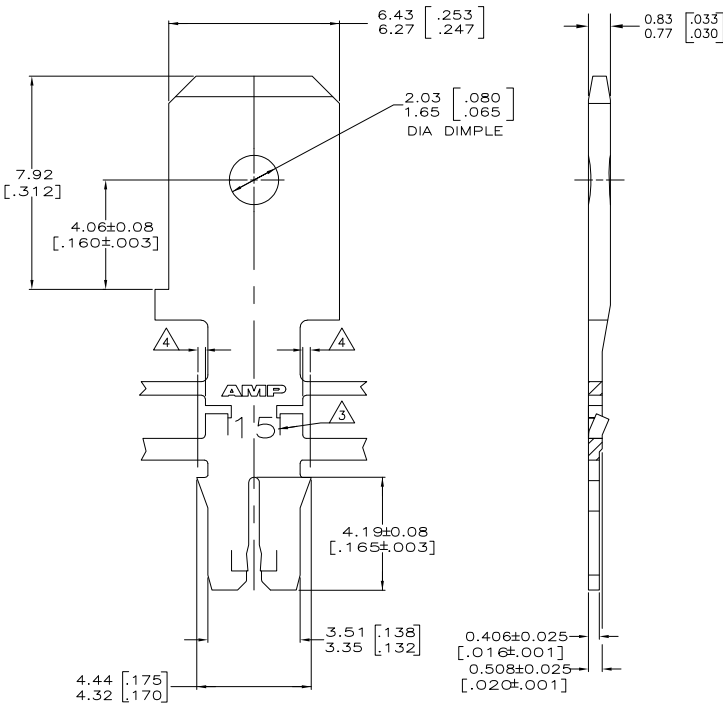


THE DRAWING IS UNPUBLISHED. RELEASED FOR PUBLICATION. BY TYCO ELECTRONICS CORPORATION. ALL RIGHTS RESERVED.

LOC	QST	REV	DESCRIPTION	DATE	DRN	APP
AF	50					
		G	REVISED PER ECR-06-010423	22SEP06	HMR	KR

- CONTINUOUS STRIP ON REELS WITH TERMINALS LOCATED ON 8.38±0.08 [.330±.003] CENTERS
- SLOT ACCEPTS 0.57-0.81mm [#23-#20] AWG COPPER MAGNET WIRE. TWO WIRES OF THE SAME SIZE MAX PER SLOT FOR #23 GAGE. ONE WIRE MAX PER SLOT FOR #22-#20 AWG
- IDENTIFICATION NUMBER 15 FOR THE MAGNET WIRE SLOT SIZE
- 0.25[.010] MAX CARRIER CUT-OFF TABS
- PRE-PRODUCTION - F.A.S.R. REQUIRED.



OBSOLETE	082 PRE-MILLED BRASS	5	63741-2
	4M PRE-MILLED BRASS		63741-1

THIS DRAWING IS A CONTROLLED DOCUMENT.		DN	L.A. MAYER	9-1-93	Tyco Electronics Corporation Harrisburg, PA 17105-3608
		DR	M.S. FEHER	9-1-93	
DIMENSIONS: TO DIMENSIONS UNLESS OTHERWISE SPECIFIED:		APR	A. HUNT III	9-1-93	MAG-MATE™ Slim Line
		PROD SPEC	108-1484		
		APPLICATION SPEC	114-2140		
MATERIAL		FINISH	0.002032 [.000080] MIN TN PLATE		
SEE TABLE		WEIGHT		SIZE	A2
		CUSTOMER DRAWING		QAGE CODE	00779
				DRAWING NO	63741
				RESTRICTED TO	
				SCALE	10:1
				SHEET	1 of 1
				REV	G

AMP 1471-B REV 31MMR2000

63741

A