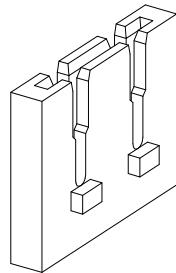
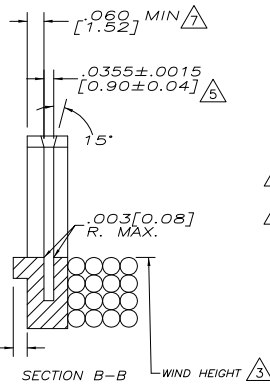
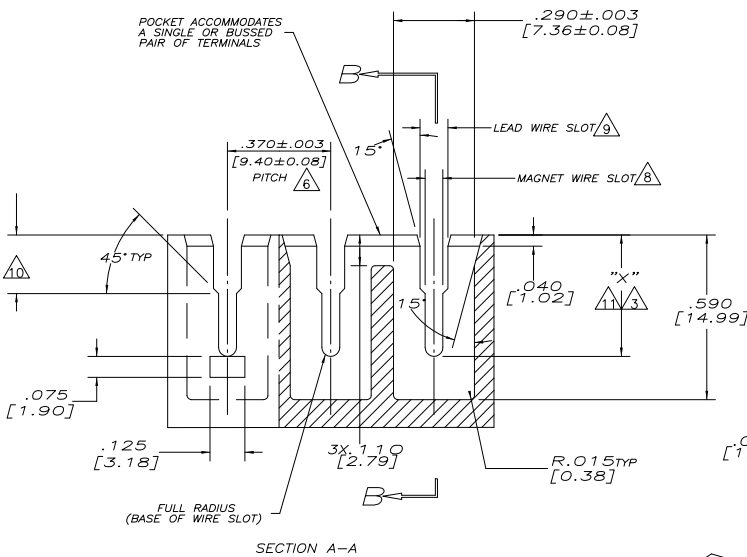
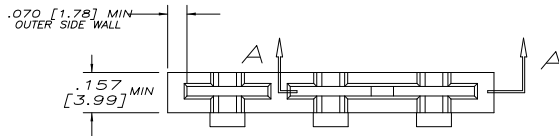


THIS DRAWING IS UNPUBLISHED. RELEASED FOR PUBLICATION  
 © COPYRIGHT BY TYCO ELECTRONICS CORPORATION. ALL RIGHTS RESERVED.

LOC	DIST	REVISIONS				
		P	LTR	DATE	MIN	APD
AF	50	A		REVISED PER 0G3A-0021-05	15JAN05	MF GJ



#19-#23 [0.91-0.57]	.388 [9.86]
#15.5-#18 [1.37-0.97]	.405 [10.29]
#12-#15 [2.06-1.45]	.426 [10.82]
MAGNET WIRE SIZE AWG [mm] DIA	SLOT DEPTH "X" ±.003 [±0.08]

- DIMENSIONS SPECIFIED MAY VARY PER CUSTOMER APPLICATION. DO NOT TOOL WITHOUT TYCO ELECTRONICS REVIEW AND APPROVAL.
- TYCO ELECTRONICS REQUIRES THE FOLLOWING INFORMATION IN ORDER TO APPROVE THE CUSTOMERS APPLICATION DRAWING: MAGNET WIRE RANGE, LEAD WIRE RANGE, AND INSULATION RANGE.
- MAGNET WIRE COIL MUST NOT EXCEED HEIGHT OF MAGNET WIRE SLOT AS SHOWN UNLESS PROVISIONS ARE MADE TO KEEP "FINISH" WIRE FLAT AGAINST BASE OF WIRE SLOTS.
- NYLON 6/6 AND NYLON 6/6 30% GLASS FILLED. OTHER MATERIALS ARE ACCEPTABLE HOWEVER, CONSULT TYCO ELECTRONICS FOR SPECIFICATIONS.
- MUST MAINTAIN SLOT THICKNESS .0355 [0.90] INCLUDING DRAFT ANGLE FROM BOTTOM OF POCKET TO .015 [0.38] MINIMUM ABOVE BASE OF WIRE SLOT. (.040 [1.02] MAX THICKNESS AT TOP)
- WHERE EVER POSSIBLE POCKET PITCH ( CAVITY ) SHOULD MATCH TERMINAL PITCH, BUT WITH TOLERANCE SHOWN.
- .070 [1.78] MIN WALL THICKNESS RECOMMENDED ON TRIM POST SIDE WHEN WIRE TRIMMING IS REQUIRED.
- SIZE THIS SLOT FOR LARGEST MAGNET WIRE DIAMETER.
- SIZE THIS SLOT FOR LARGEST LEAD WIRE. MAXIMUM SLOT TO BE .110 [2.79] WIDE.
- THIS DIMENSION TO BE .210 [5.33] PLUS THE WALL THICKNESS OF THE LEAD WIRE TO BE USED.
- REFER TO TABLE. CONSULT TYCO ELECTRONICS IF WIRE SIZE TO BE USED OVERLAP THE RANGES SHOWN.

THIS DRAWING IS A CONTROLLED DOCUMENT.		DWG: MICHAEL S. FEHLER CK: GENE JACONO APP: KURT A. RANDOLPH	Tyco Electronics Corporation Harrisburg, Pa 17105-3608 <b>tyco</b> <b>Electronics</b>
DIMENSIONS: INCHES: 0 PLC ± .001 1 PLC ± .0015 2 PLC ± .002 3 PLC ± .0025 4 PLC ± .003 ANGLES: ± .30 FINISH: -	TOLERANCES UNLESS OTHERWISE SPECIFIED: 0 PLC ± .001 1 PLC ± .0015 2 PLC ± .002 3 PLC ± .0025 4 PLC ± .003	NAME: MEDIUM RANGE WIRE TO WIRE SIAMEZE POCKET SPECIFICATION APPLICATION SPEC: 408-8629 HEIGHT: - CUSTOMER DRAWING	SIZE: A2 CASE CODE: 00779 DRAWING NO: C=1601436 RESTRICTED TO: - SCALE: 4:1 SHEET: 1 OF 1 REV: A