

4

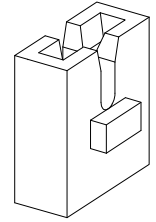
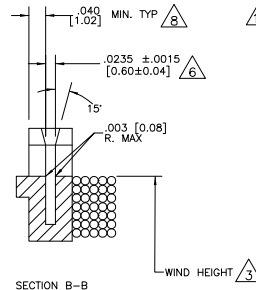
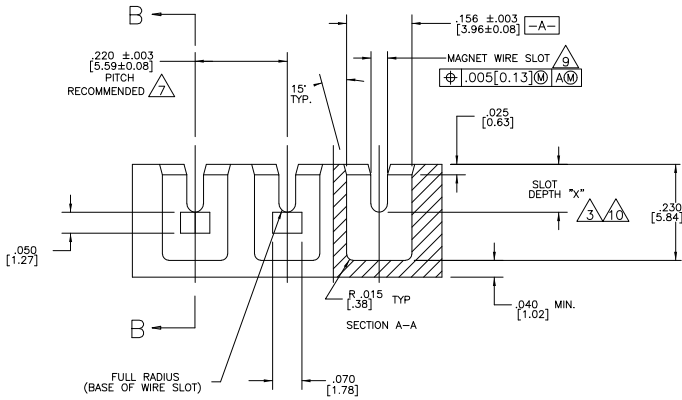
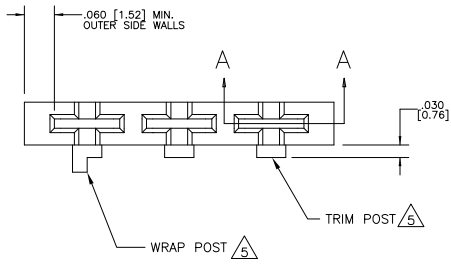
3

2

1

THIS DRAWING IS UNPUBLISHED. RELEASED FOR PUBLICATION
 © COPYRIGHT BY TYCO ELECTRONICS CORPORATION. ALL RIGHTS RESERVED.

LOC		DIBT		REVISIONS				
AF		50		P	LR	DATE	MIN	APD
				B		REVISED PER ECR-07-006768		OSAPR07 HMR GJ



- 1 DIMENSIONS SPECIFIED MAY VARY PER CUSTOMER APPLICATION, DO NOT TOOL WITHOUT TYCO ELECTRONICS REVIEW AND APPROVAL.
- 2 TYCO ELECTRONICS REQUIRES THE FOLLOWING INFORMATION IN ORDER TO APPROVE THE CUSTOMERS APPLICATION DRAWING MAGNET WIRE RANGE, LEAD WIRE RANGE AND INSULATION THICKNESS.
- 3 MAGNET WIRE COIL MUST NOT EXCEED HEIGHT OF MAGNET WIRE SLOT AS SHOWN UNLESS PROVISIONS ARE MADE TO KEEP "FINISH" WIRE FLAT AGAINST BASE OF WIRE SLOT.
- 4 MATERIAL RECOMMENDED: NYLON 6/6 AND NYLON 6/6 30% GLASS FILLED. OTHER MATERIALS ARE ACCEPTABLE HOWEVER, CONSULT TYCO ELECTRONICS FOR SPECIFICATIONS.
- 5 30 AWG (# .01 [0.26]) WIRE AND FINER REQUIRES WIRE WRAP POST INSTEAD OF TRIM POST. SEE SPEC. DRW. #1601447.
- 6 MUST MAINTAIN SLOT THICKNESS (.0235 [0.60] INCLUDING DRAFT ANGLE FROM BOTTOM OF POCKET TO .015[0.38] MINIMUM ABOVE BASE OF WIRE SLOT. (.029[0.74] MAX.THICKNESS AT TOP).
- 7 WHENEVER POSSIBLE, POCKET PITCH TO MATCH TERMINAL PITCH. MINIMUM PITCH TO BE .197 [5.00].
- 8 .060 [1.52] MIN. WALL THICKNESS RECOMMENDED ON TRIM POST SIDE WHEN WIRE TRIMMING IS REQUIRED.
- 9 SIZE THIS SLOT FOR LARGEST WIRE DIA. CONSULT MOLD VENDOR IF SMALLER THAN .020 [0.51] IS TO BE SPECIFIED.
- 10 REFER TO TABLE. CONSULT TYCO ELECTRONICS IF WIRE SIZE TO BE USED, OVERLAP THE RANGES SHOWN.
- 11 SLOT DEPTH DIMENSIONS ARE FOR CONNECTING ONE MAGNET WIRE WITH A MOVING BEAM SIAMEZE CONTACT. CONSULT TYCO ELECTRONICS FOR BIFILAR (2 WIRE) CONNECTIONS.

MAGNET WIRE SIZE AWG [mm DIA]	SLOT DEPTH "x" ±.003 [±0.08]
#18-#21.5 [1.02-0.69]	.135 [3.43]
#22-#25.5 [0.65-0.43]	.123 [3.12]
#26-#29.5 [0.41-0.27]	.115 [2.92]
#30-#33.5 [0.25-0.17]	.110 [2.79]
#34-#36 [0.16-0.13]	.107 [2.72]

THIS DRAWING IS A CONTROLLED DOCUMENT.

DIMENSIONS: INCHES DECIMALS FRACTIONS ANGLES FINISH	TOLERANCES UNLESS OTHERWISE SPECIFIED: 0 PLC ± .001 1 PLC ± .0015 2 PLC ± .002 3 PLC ± .0025 4 PLC ± .003 ANGLES ± .0015 FINISH	DWG: OSAPR2002 MICHAEL S. FEHNER CK: OSAPR2002 GENE JACONO APP: OSAPR2002 KURT A. RANDOLPH PRODUCT SPEC: 114-13166 HEIGHT: -	Tyco Electronics Corporation Harrisburg, Pa 17105-3608 P.C. BOARD TAB SIAMEZE POCKET SPECIFICATION SIZE: A2 CASE CODE: 00779 DRAWING NO: C=1601424 RESTRICTED TO: -
--------------------------------------------------------------------	------------------------------------------------------------------------------------------------------------------------------------------------------	---------------------------------------------------------------------------------------------------------------------------------------------------	------------------------------------------------------------------------------------------------------------------------------------------------------------------------------------------

CUSTOMER DRAWING SCALE: 4:1 SHEET 1 OF 1 REV B

AMP 1471-9 REV 31MM2000

1601424

A