

4

3

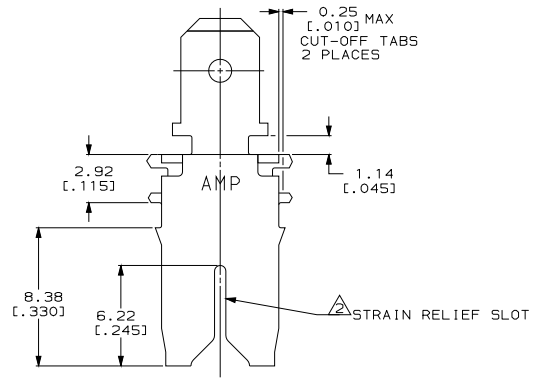
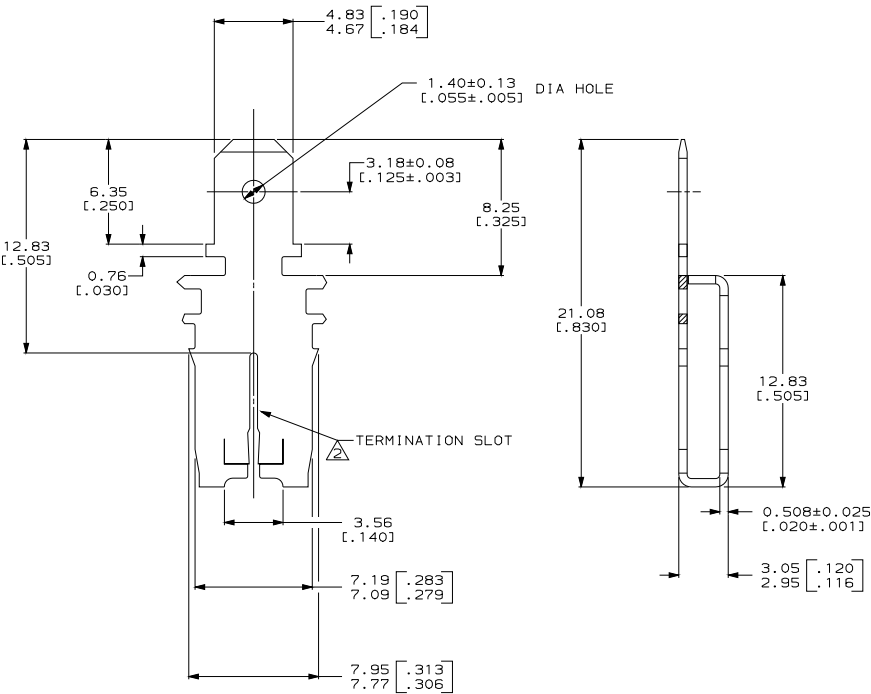
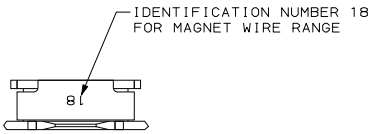
2

1

THIS DRAWING IS UNPUBLISHED. RELEASED FOR PUBLICATION
 © COPYRIGHT 19 BY AMP INCORPORATED. ALL RIGHTS RESERVED.

LOC		DISTR		REVISIONS			
AF	50	F	LWR	DESCRIPTION	DATE	BY	APP'D
		C		REV PER QL10-0373-97	10SEP97	RG	NN

- CONTINUOUS STRIP ON REELS WITH TERMINALS LOCATED ON 8.38±0.08 [.330±.003] CENTERS.
- △ SLOT TERMINATES EITHER A SINGLE OR DOUBLE MAGNET WIRE OF THE SAME SIZE AND TYPE. COPPER RANGE: 0.64-0.81mm [#22-#20] AWG.
- AFTER INSERTION INTO PLASTIC HOLDER, TAB PORTION MUST BE BENT OVER 45° TO 90° OR POTTED-IN TO PREVENT PULL-OUT WHEN MATING RECEPTACLE IS DISCONNECTED.
- THIS DRAWING IS RESTRICTED TO G.S. ELECTRIC



PROPOSED DESIGN
 NOT RELEASED FOR
 PRODUCTION

63983-1
 PART NUMBER

THIS DRAWING IS A CONTROLLED DOCUMENT.		DWG: MICHAEL S. FENNER	DATE: 09/27/97	AMP Incorporated Harrisburg, PA 17105-3608	
DRAWN BY: RICHARD GRZYBOWSKI		CHK: NELSON E. NEFF	DATE: 09/27/97	AMP	
DIMENSIONS: mm (INCHES)		PRODUCT SPEC: 108-2053	APPLICATION SPEC: 114-2066	SIZE: CASE CODE (DRAWING NO.)	
TOLERANCES UNLESS OTHERWISE SPECIFIED:		MATERIAL: 4M BRASS		FINISH: 0.002032 [.000080]	
Ø	PLC ±.01	MIN TIN PER MIL-T-10727		CUSTOMER DRAWING	
Ø	PLC ±.02	MIL-T-10727		SCALE: 6:1	
Ø	PLC ±.05 (Ø10)	CUSTOMER DRAWING		SHEET: 1 OF 1	
Ø	PLC ±.05	CUSTOMER DRAWING		REV: C	
Ø	PLC ±.05	CUSTOMER DRAWING		RESTRICTED TO	
Ø	PLC ±.05	CUSTOMER DRAWING		A200779 ©-63988	

TAB, 4.75 [.187] FASTON™
 MAG-MATE™

NOT THE LATEST REVISION