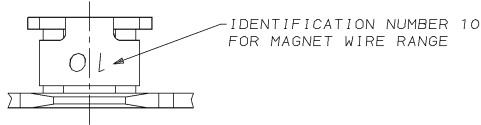
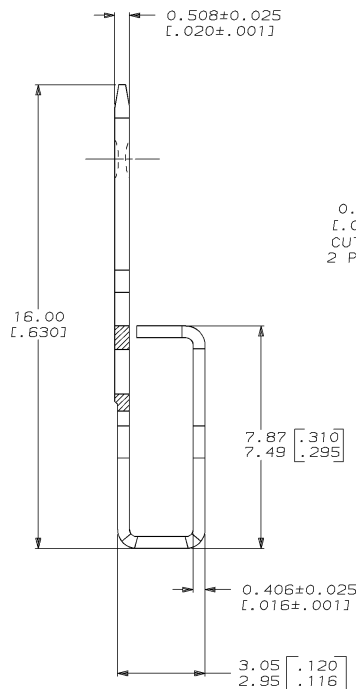
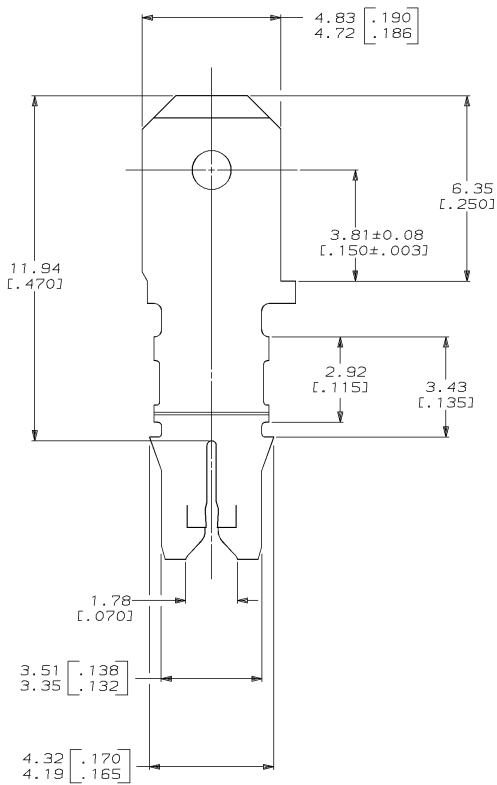


DRAWING MADE IN THIRD ANGLE PROJECTION
 THIS DRAWING IS UNPUBLISHED. RELEASED FOR PUBLICATION, 19
 © COPYRIGHT 19 BY AMP INCORPORATED. ALL INTERNATIONAL RIGHTS RESERVED.

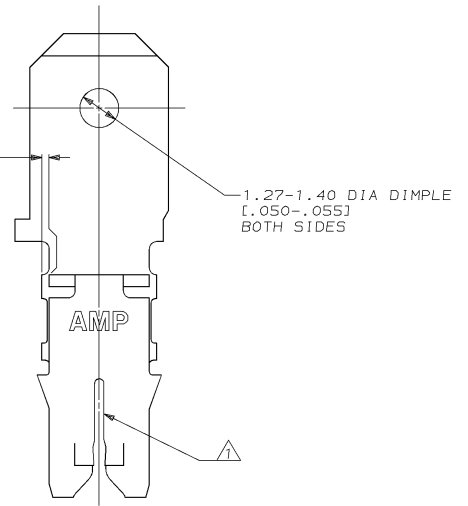
REVISIONS							DATE	APPD
LOC	DIST	P	F	ZONE	LTR	DESCRIPTION		
AF	50				A	REV PER 0710-0230-95	31/MAY/95	RS/NN



△ SLOT TERMINATES EITHER A SINGLE OR DOUBLE MAGNET WIRE OF THE SAME SIZE AND TYPE. COPPER RANGE: 0.36-0.57mm [#27-#23] AWG.
 2 AFTER INSERTION INTO PLASTIC HOLDER TAB PORTION MUST BE BENT OVER 45° TO 90° OR POTTED-IN TO PREVENT PULL-OUT WHEN MATING RECEPTACLE IS DISCONNECTED.



0.25 MAX [.010]
 CUT-OFF
 2 PLACES



63852-1
 PART NO

DO NOT SCALE PRINT. UNLESS SPECIFIED DIMENSIONS IN mm [INCHES] TOLERANCES ON + 2 PLC DEC ± 0.25 [.010] 3 PLC DEC ± ANGLES ± -		DR 29/APR/95 R. GRZYBOWSKI	AMP AMP Incorporated Harrisburg, PA 17105-3608	
MATERIAL 4M BRASS		CHK 29/APR/95 M.S. FEHER	NAME TERMINAL, TAB, 4.75 [.187] FASTON™ LOOSE PIECE, MAG-MATE™	
FINISH 0.002032 [.000080] MIN TIN PER MIL-T-10727		APPD 29/APR/95 NELSON E. NEFF	PRODUCT SPEC 108-2012	DRAWING NO C 63852
THIS DRAWING IS A CONTROLLED DOCUMENT FOR AMP INCORPORATED. IT IS SUBJECT TO CHANGE AND THE CONTROLLING ENGINEERING ORGANIZATION SHOULD BE CONTACTED FOR THE LATEST REVISION.		APPD 29/APR/95 TERRY L. SHUTTER	APPLICATION SPEC 114-2046	SCALE 10:1
AMP 1471-6 REV 3-92		WEIGHT -	CAGE CODE 00779	SHEET 1 OF 1

31-MAY-95 15:58:28 amp21428 /ws/dept2127/dwg2127/u_maa-mate/u_300

CUSTOMER DRAWING

63852

A