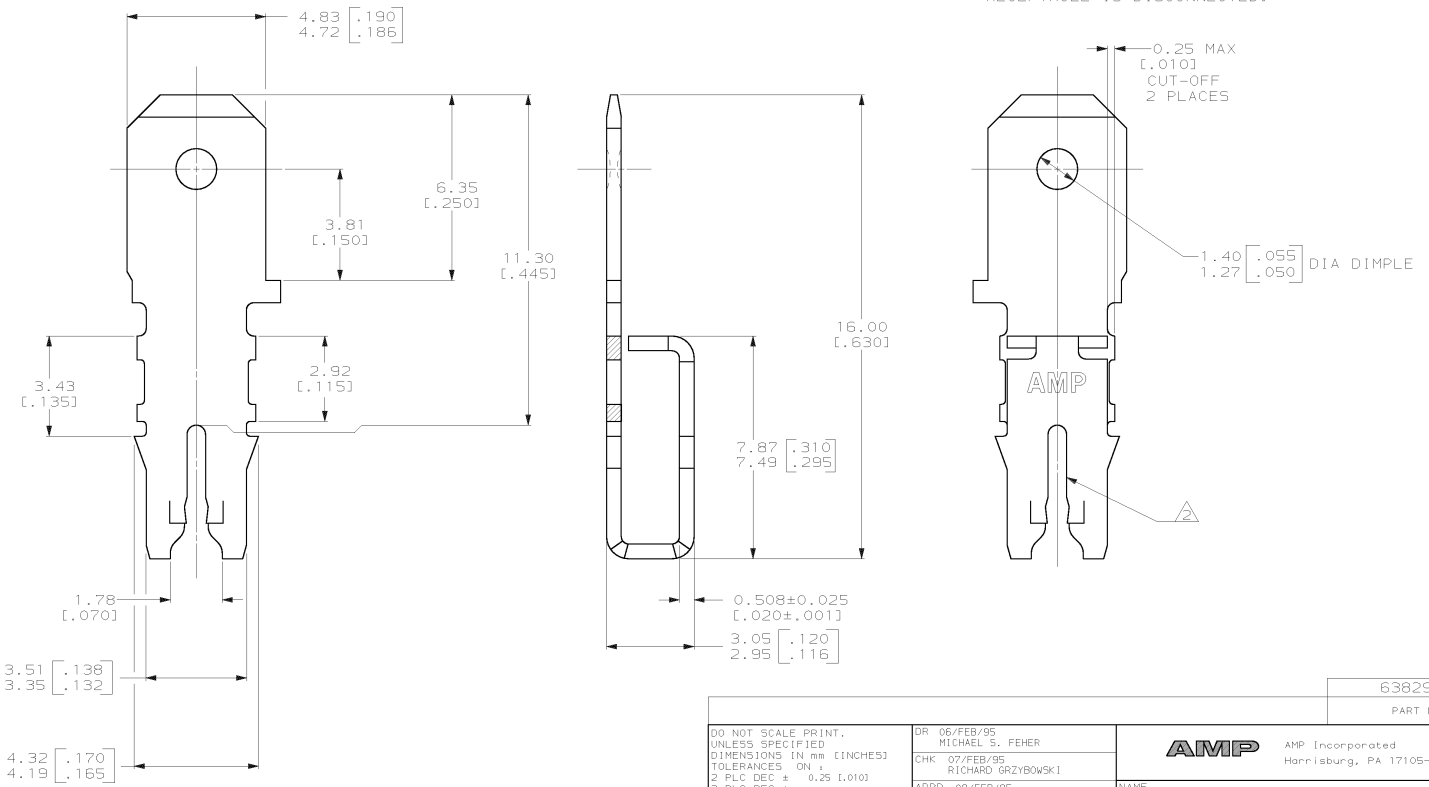


THIS DRAWING IS UNPUBLISHED. RELEASED FOR PUBLICATION .19
 © COPYRIGHT 19 BY AMP INCORPORATED. ALL INTERNATIONAL RIGHTS RESERVED.

LOC	DIST	P	F	ZONE	LTR	REVISIONS	DATE	APPRO
AF	50					B REVISE SLOT HEIGHT 0L10-0401-97	09oct97	MF/KR



- △ SLOT TERMINATES A SINGLE MAGNET WIRE ONLY.
 COPPER RANGE: 0.91-1.15mm [#19-#17] AWG.
 ALUMINUM RANGE: 1.02-1.22mm [#18-#16.5] AWG,
 WITH CAVITY ANVIL HEIGHT TO BE 2.29±0.13
 [.090±.005] FOR ALUMINUM WIRE ONLY.
- 2 AFTER INSERTION INTO PLASTIC HOLDER TAB
 PORTION MUST BE BENT OVER 45° TO 90° OR
 POTTED-IN TO PREVENT PULL-OUT WHEN MATING
 RECEPTACLE IS DISCONNECTED.



DO NOT SCALE PRINT. UNLESS SPECIFIED DIMENSIONS IN mm [INCHES] TOLERANCES ON: 2 PLC DEC ± 0.25 [.010] 3 PLC DEC ± - ANGLES ± -		DR 06/FEB/95 MICHAEL S. FEHER	63829-1 PART NO	
MATERIAL 4M BRASS	APPD 09/FEB/95 TERRY L. SHUTTER	CHK 07/FEB/95 RICHARD GRZYBOWSKI	AMP AMP Incorporated Harrisburg, PA 17105-3608	
FINISH 0.002032 [.000080] MIN TIN PER MIL-T-10727	PRODUCT SPEC 108-2012	APPD 09/FEB/95 NELSON E. NEFF	NAME TERMINAL, TAB, 4.75 [.187] FASTON™ LOOSE PIECE, MAG-MATE™	
	APPLICATION SPEC 114-2046	SIZE C	CAGE CODE 00779	DRAWING NO C-63829
	WEIGHT -	SCALE 10:1	SHEET 1 OF 1	

THIS DRAWING IS A CONTROLLED DOCUMENT FOR AMP INCORPORATED. IT IS SUBJECT TO CHANGE AND THE CONTROLLING ENGINEERING ORGANIZATION SHOULD BE CONTACTED FOR THE LATEST REVISION.