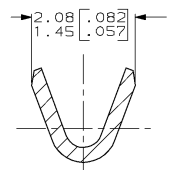
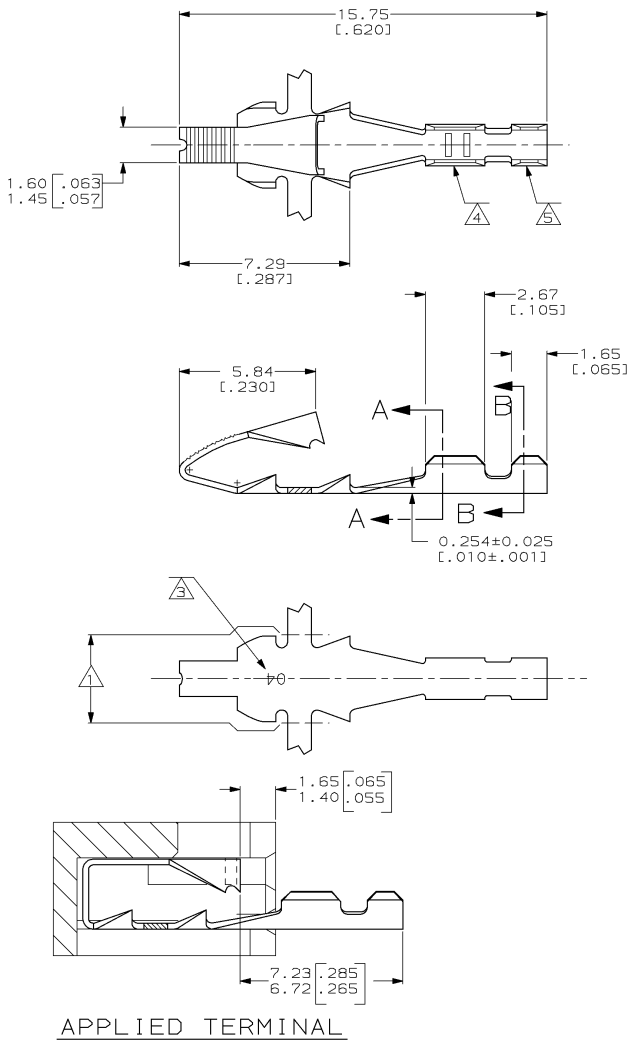
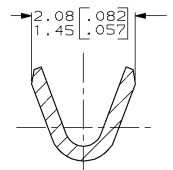


THIS DRAWING IS UNPUBLISHED. RELEASED FOR PUBLICATION .19
 © COPYRIGHT 19 BY AMP INCORPORATED. ALL INTERNATIONAL RIGHTS RESERVED.

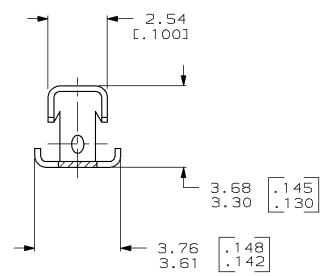
LOC		DIST		ZONE		LTR		REVISIONS			
AF	50	P	F					DESCRIPTION	DATE	APPD	
								C	REVISE PER ECN 0G1A-0178-98	07AUG98	SUVKR



SECTION A-A
SCALE 20:1



SECTION B-B
SCALE 20:1



- △ 3.78±0.13 [.149±.005] APPLICATOR CUT-OFF.
- 2 CONTINUOUS STRIP ON REELS WITH TERMINALS LOCATED ON 6.10±0.08 [.240±.003] CENTERS.
- △ IDENTIFICATION NUMBER 04 FOR MAGNET WIRE RANGE.
- △ WIRE BARREL ACCEPTS A #26-#22 AWG LEAD WIRE, WITH A CMA OF 250 TO 700.
- △ INSULATION BARREL ACCEPTS 0.49mm [.039] DIA NOMINAL.

INSULATION DIA	LEAD WIRE RANGE	COPPER MAGNET WIRE RANGE	PART NO
0.02-0.06mm [#52-#42] AWG			63828-1
DO NOT SCALE PRINT. UNLESS SPECIFIED DIMENSIONS IN mm [INCHES] TOLERANCES ON : 2 PLC DEC ± 0.25 (.010) 3 PLC DEC ± - ANGLES ± -		AMP AMP Incorporated Harrisburg, PA 17105-3608	
MATERIAL H02 BRASS		NAME TERMINAL, WIRE BARREL, MINI MAG-MATE™	
FINISH 0.002032 [.000080] MIN TIN PER MIL-T-10727		APPLICATION SPEC 114-2047	
WEIGHT -		SIZE C 00779	DRAWING NO C-63828
		SCALE 8:1	SHEET 1 OF 1

THIS DRAWING IS A CONTROLLED DOCUMENT FOR AMP INCORPORATED. IT IS SUBJECT TO CHANGE AND THE CONTROLLING ENGINEERING ORGANIZATION SHOULD BE CONTACTED FOR THE LATEST REVISION.

CUSTOMER DRAWING