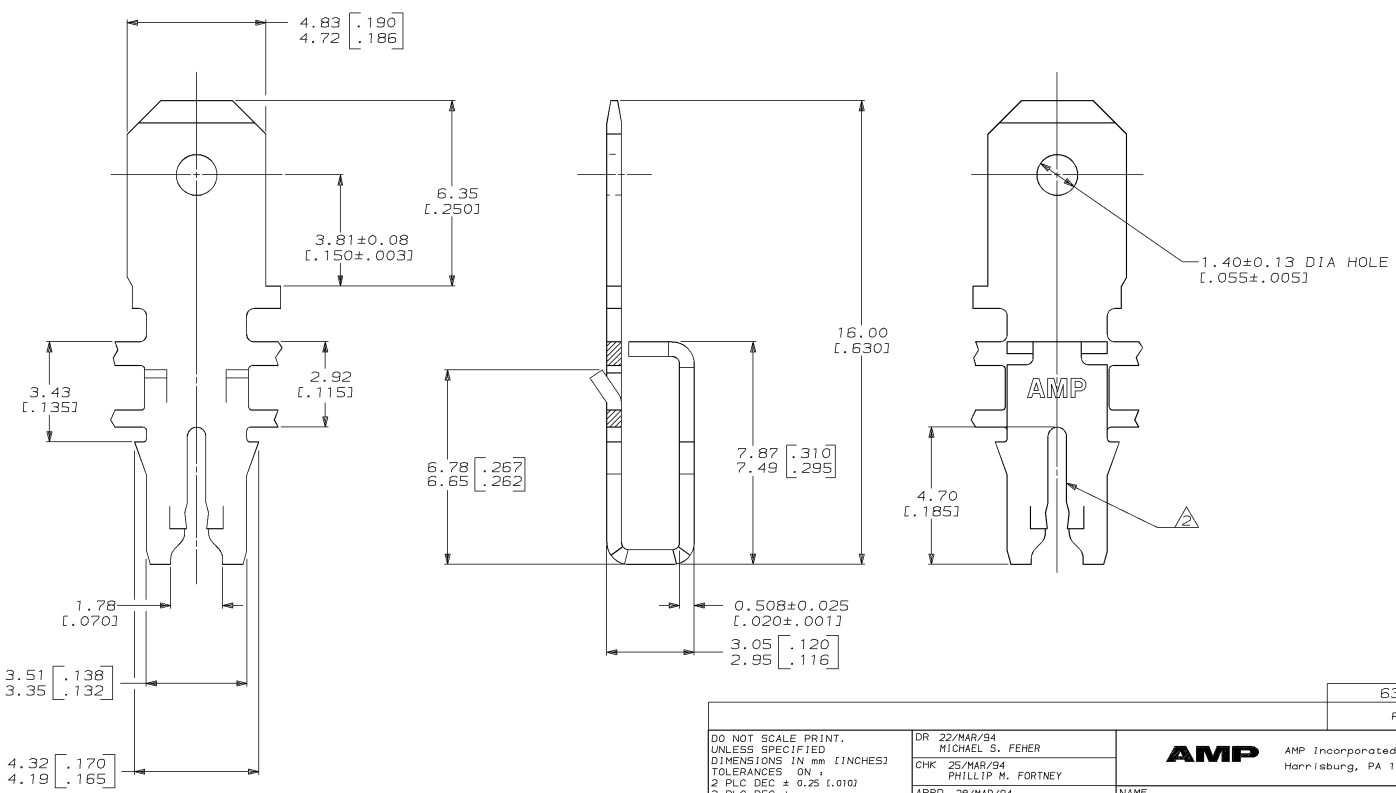
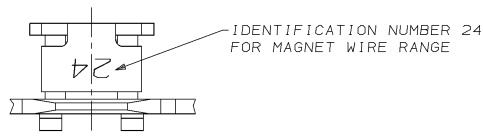


DRAWING MADE IN THIRD ANGLE PROJECTION
 THIS DRAWING IS UNPUBLISHED. RELEASED FOR PUBLICATION .19
 © COPYRIGHT 19 BY AMP INCORPORATED. ALL INTERNATIONAL RIGHTS RESERVED.

LOC		DIST		ZONE		LTR		REVISIONS		DATE	APPD
AF	50	P	F					A	REL TO PRODUCTION PER 0710-0158-94	24/JUN/94	RB/NN

- CONTINUOUS STRIP ON REELS WITH TERMINALS LOCATED ON 5.59±0.08 [.220±.003] CENTERS. SLOT TERMINATES A SINGLE MAGNET WIRE ONLY. COPPER RANGE: 0.91-1.15mm [#19-#17] AWG.
- △ AFTER INSERTION INTO PLASTIC HOLDER TAB PORTION MUST BE BENT OVER 45° TO 90° OR POTTED-IN TO PREVENT PULL-OUT WHEN MATING RECEPTACLE IS DISCONNECTED.



THIS DRAWING IS A CONTROLLED DOCUMENT FOR AMP INCORPORATED. IT IS SUBJECT TO CHANGE AND THE CONTROLLING ENGINEERING ORGANIZATION SHOULD BE CONTACTED FOR THE LATEST REVISION.

DO NOT SCALE PRINT. UNLESS SPECIFIED DIMENSIONS IN mm [INCHES] TOLERANCES ON:		DR 22/MAR/94 MICHAEL S. FEHER		63782-1 PART NO	
1 PLC DEC ± 0.25 [1.01]		CHK 25/MAR/94 PHILLIP M. FORTNEY		AMP AMP Incorporated Harrisburg, PA 17105-3608	
2 PLC DEC ± 0.25 [1.01]		APPD 28/MAR/94 NELSON E. NEFF		NAME	
3 PLC DEC ± 0.25 [1.01]		APPD 28/MAR/94 TERRY L. SHUTTER		TERMINAL, TAB, 4.75 [.187] FASTON™, MAG-MATE™	
MATERIAL 4M BRASS		PRODUCT SPEC 108-2012		DRAWING NO	
FINISH 0.002032 [.000080] MIN TIN PER MIL-T-10727		APPLICATION SPEC 114-2067		SIZE C	CAGE CODE 00779
WEIGHT -		SCALE 10:1		DRAWING NO C-63782	
				SHEET 1 OF 1	