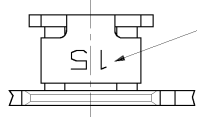


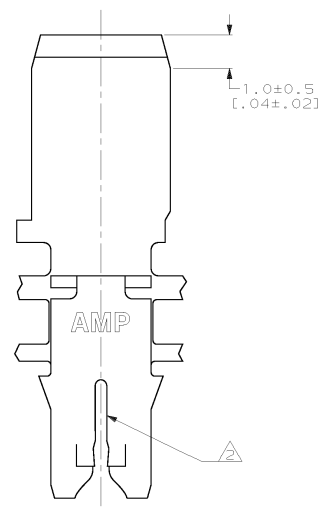
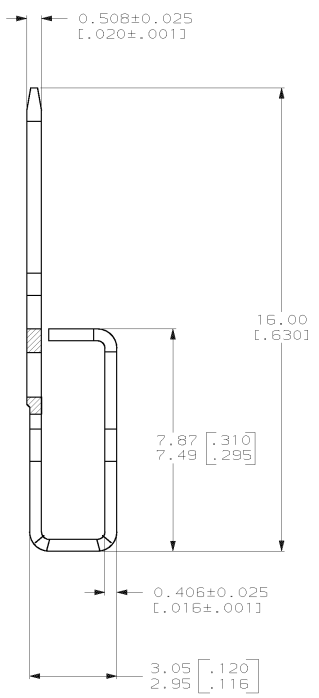
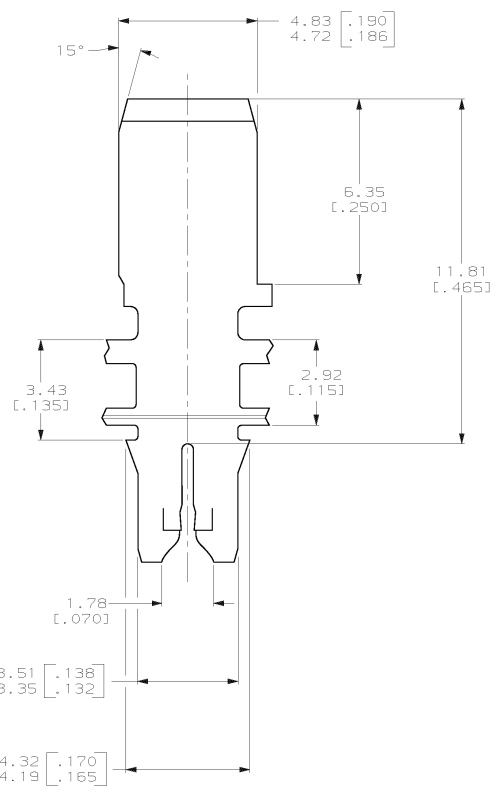
THIS DRAWING IS UNPUBLISHED. RELEASED FOR PUBLICATION, 19
 © COPYRIGHT 19 BY AMP INCORPORATED. ALL INTERNATIONAL RIGHTS RESERVED.

LOC	DIST	P	F	ZONE	LTR	DESCRIPTION	DATE	APPO
AF	50					D ADDED -2 PER 063A-0354-00	14/3/00	MF/KR

- CONTINUOUS STRIP ON REELS WITH TERMINALS LOCATED ON 5.59 ± 0.08 [$.220 \pm .003$] CENTERS. SLOT TERMINATES A SINGLE MAGNET WIRE ONLY. COPPER RANGE: 0.57mm [#23] AWG.
 - AFTER INSERTION INTO PLASTIC HOLDER TAB PORTION MUST BE BENT OVER 45° TO 90° OR POTTED-IN TO PREVENT PULL-OUT WHEN MATING RECEPTACLE IS DISCONNECTED.
- ⚠ SPECIAL LABELING.
 ⚠ PRELIMINARY - NOT FOR PRODUCTION.



IDENTIFICATION NUMBER 15 FOR MAGNET WIRE RANGE



DO NOT SCALE PRINT. UNLESS SPECIFIED DIMENSIONS IN mm (INCHES) TOLERANCES ON: 2 PL C DEC ± 0.25 (.010) 3 PL C DEC ± - ANGLES ± -		DR 04/FEB/94 MICHAEL S. FEHER CHK 09/FEB/94 PHILLIP M. FORTNEY APPD 09/FEB/94 KURT A. RANDOLPH APPD 09/FEB/94 TERRY L. SHUTTER PRODUCT SPEC 108-2012	AMP AMP Incorporated Harrisburg, PA 17105-3608 NAME TERMINAL, TAB, 4.75 [.187] FASTON™, MAG-MATE™
MATERIAL 4M PRE-MILLED BRASS	FINISH 0.002032 [.000080] MIN TIN PER MIL-T-10727	APPLICATION SPEC 114-2046	SIZE CAGE CODE DRAWING NO 00779 C-63776
THIS DRAWING IS A CONTROLLED DOCUMENT FOR AMP INCORPORATED. IT IS SUBJECT TO CHANGE AND THE CONTROLLING ENGINEERING ORGANIZATION SHOULD BE CONTACTED FOR THE LATEST REVISION.		WEIGHT -	SCALE 10:1 SHEET 1 OF 1

63776-2
63776-1

CUSTOMER DRAWING