

4

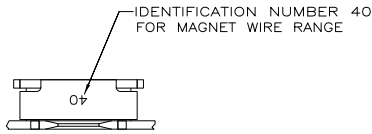
3

2

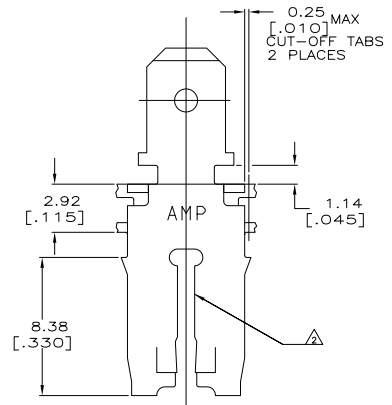
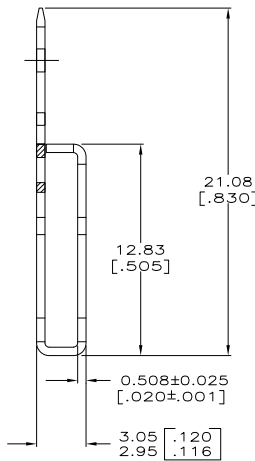
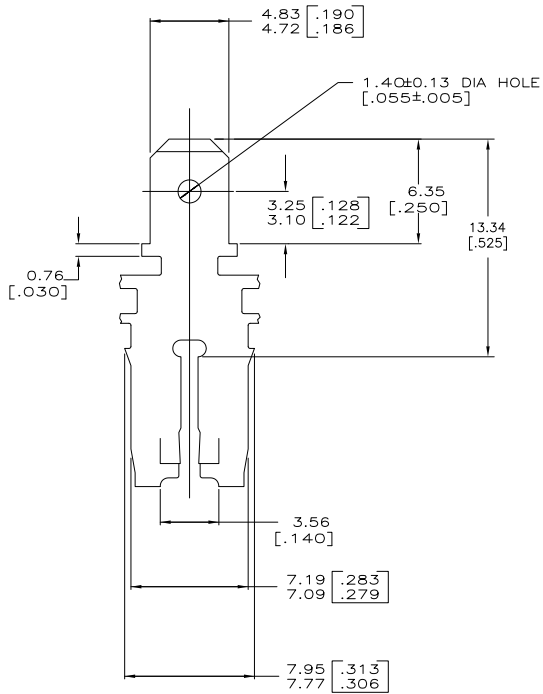
1

THIS DRAWING IS UNPUBLISHED. RELEASED FOR PUBLICATION. BY TYCO ELECTRONICS CORPORATION. ALL INTERNATIONAL RIGHTS RESERVED.

LOC	DIST	REVISIONS		
F	LNK	DESCRIPTION	DATE	BY
AF	50			
	A1	REVISED PER ECR-09-002564	12FEB09	HMR KR



- 1 CONTINUOUS STRIP ON REELS WITH TERMINALS LOCATED ON 8.38 [.330] CENTERS.
- 2 SLOT TERMINATES A SINGLE MAGNET WIRE ONLY. COPPER RANGE: 1.45-1.29mm [#15-#16] AWG.
- 3 AFTER INSERTION INTO PLASTIC HOLDER TAB PORTION MUST BE BENT OVER 45° TO 90° OR POTTED-IN TO PREVENT PULL-OUT WHEN MATING RECEPTACLE IS DISCONNECTED.



63762-1
PART NO

THIS DRAWING IS A CONTROLLED DOCUMENT.		DRW MICHAEL S. FEHRER 02/06/93	Tyco Electronics Corporation Harrisburg, PA 17105-3608	
DIMENSIONS: mm [INCHES]		CHK PHILLIP M. FORTNEY 07/02/93	TAB, 4.75 [.187] FASTON™ MAG-MATE™	
TOLERANCES UNLESS OTHERWISE SPECIFIED:		APPC NELSON E. NEFF 09/02/93	SIZE CASE CODE DRAWING NO RESTRICTED TO	
0 PLC ± -	1 PLC ± -	PRODUCT SPEC: 108-2012	A2	00779 C=63762
2 PLC ± 0.25 (010)	3 PLC ± -	APPLICATION SPEC: 114-2066	CUSTOMER DRAWING	
4 PLC ± -	ANGLES ± -	FINISH: 0.002032 [000080] MIN TN	SCALE: 6:1	SHEET: 1 of 1
MATERIAL: H03 BRASS		REV: A1		

1471-9 (1/08)

63762

A