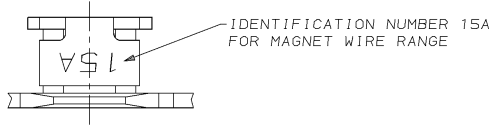
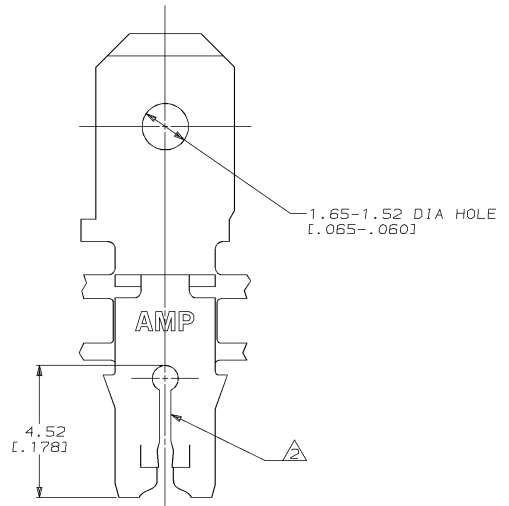
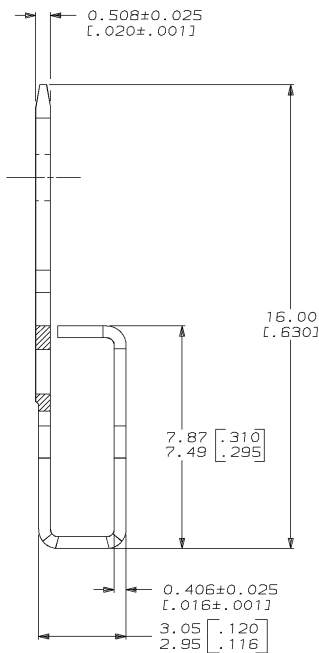
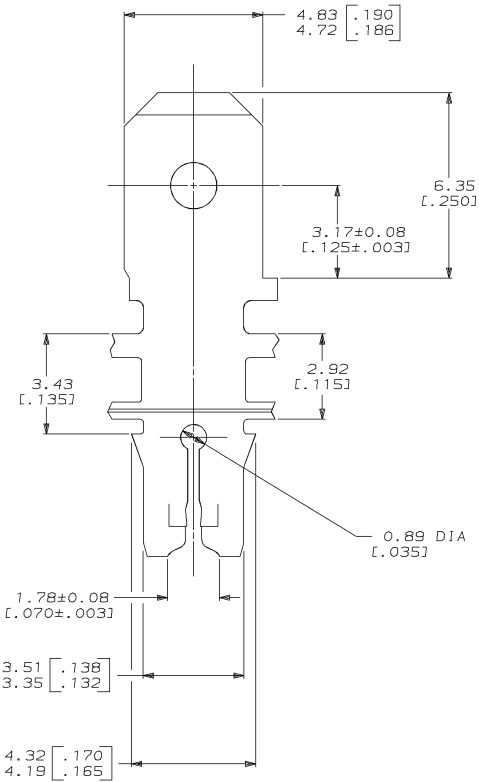


DRAWING MADE IN THIRD ANGLE PROJECTION
 THIS DRAWING IS UNPUBLISHED. RELEASED FOR PUBLICATION
 © COPYRIGHT 19 BY AMP INCORPORATED. ALL INTERNATIONAL RIGHTS RESERVED.

LOC		DIST		ZONE		LTR		REVISIONS		DATE	APPD
AF	50							C	REV LENGTH PER 0710-0034-95	03/FEB/95	MF/NN



- 1 CONTINUOUS STRIP ON REELS WITH TERMINALS LOCATED ON 5.59±0.08 [.220±.003] CENTERS.
- 2 SLOT TERMINATES A SINGLE MAGNET WIRE ONLY. ALUMINUM RANGE: 0.72-0.96mm [#21-#18.5] AWG.
- 3 AFTER INSERTION INTO PLASTIC HOLDER TAB PORTION MUST BE BENT OVER 45° TO 90° OR POTTED-IN TO PREVENT PULL-OUT WHEN MATING RECEPTACLE IS DISCONNECTED.
- 4 ANVIL HEIGHT TO BE 2.29±0.13 [.090±.005].
- 5 VARNISH RESIST OVER 0.002032 [.000080] MIN TIN PER MIL-T-10727.



DO NOT SCALE PRINT. UNLESS SPECIFIED DIMENSIONS IN mm [INCHES] TOLERANCES ON: 2 PLC DEC ± 0.25 (.010) 3 PLC DEC ± ANGLES ± -		DR 9/3/92 MICHAEL S. FEHER	63669-1 PART NO	
MATERIAL H03 PRE-MILLED BRASS	CHK 9/4/92 JEFF R. RUTH	APPD 9/15/92 NELSON E. NEFF	AMP AMP Incorporated Harrisburg, PA 17105-3608	
FINISH 5	APPD 9/15/92 TERRY L. SHUTTER	PRODUCT SPEC 108-2012	NAME TERMINAL, TAB, 4.75 [.187] FASTON, TM MAG-MATE TM	
APPLICATION SPEC 114-2046	SIZE C	CAGE CODE 00779	DRAWING NO C=63669	
WEIGHT -	SCALE 10:1	SHEET 1 OF 1		

THIS DRAWING IS A CONTROLLED DOCUMENT FOR AMP INCORPORATED. IT IS SUBJECT TO CHANGE AND THE CONTROLLING ENGINEERING ORGANIZATION SHOULD BE CONTACTED FOR THE LATEST REVISION.