

4

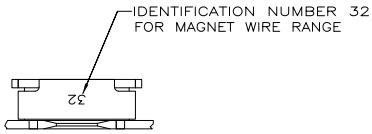
3

2

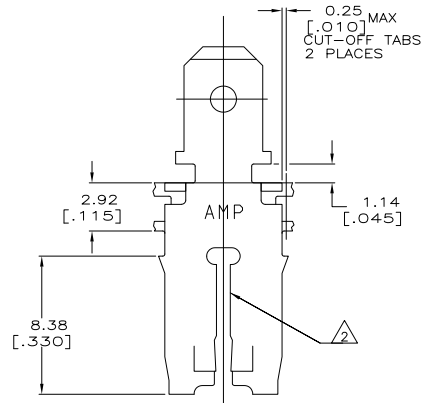
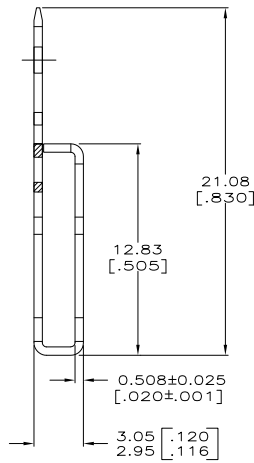
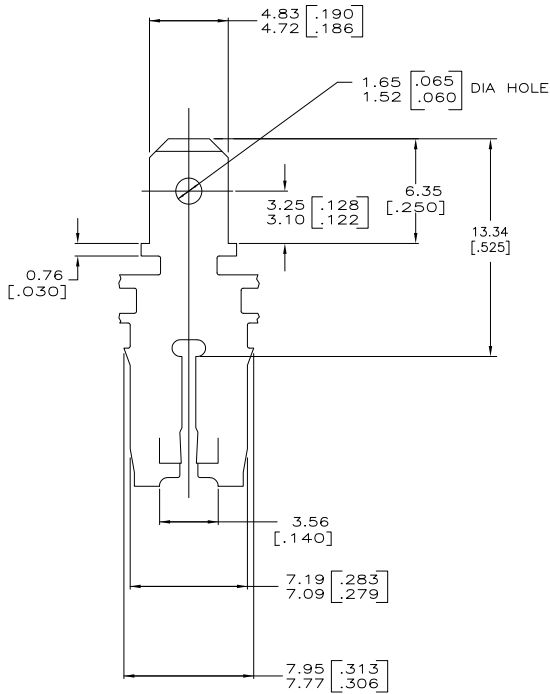
1

THIS DRAWING IS UNPUBLISHED. RELEASED FOR PUBLICATION.  
 © COPYRIGHT BY TYCO ELECTRONICS CORPORATION. ALL INTERNATIONAL RIGHTS RESERVED.

LOC	DIST	REVISIONS		DATE	BY	APP'D
AF	50	F	LR			
		B1		REVISED PER ECR-09-002564	12FEB09	HMR KR



- CONTINUOUS STRIP ON REELS WITH TERMINALS LOCATED ON  $8.38 \pm 0.08$  [.330 ± .003] CENTERS.
- SLOT TERMINATES A SINGLE MAGNET WIRE ONLY. COPPER RANGE: 1.09-1.29mm [#17.5-#16] AWG.
- AFTER INSERTION INTO PLASTIC HOLDER TAB PORTION MUST BE BENT OVER 45° TO 90° OR POTTED-IN TO PREVENT PULL-OUT WHEN MATING RECEPTACLE IS DISCONNECTED.
- VARNISH RESIST OVER 0.002032 [.00080] MIN TIN



63667-1  
PART NO

THIS DRAWING IS A CONTROLLED DOCUMENT.		DRW: MICHAEL S. FEHR 8/20/92	Tyco Electronics Corporation Harrisburg, PA 17105-3608	
DIMENSIONS: mm [INCHES]		CHK: JEFF R. RUTH 8/21/92	NAME: TAB, 4.75 [.187] FASTON™, MAG-MATE™	
TOLERANCES UNLESS OTHERWISE SPECIFIED:		APP'D: NELSON E. NEFF 8/28/92	SIZE: A2	
0 PLG ± -	1 PLG ± -	PRODUCT SPEC: 108-2012	CAGE CODE: 00779	
2 PLG ± -	3 PLG ± -	APPLICATION SPEC: 114-2066	DRAWING NO: 63667	
4 PLG ± -	ANGLES ± -	FINISH: FRESH	RESTRICTED TO: -	
MATERIAL: H03 BRASS		WEIGHT: -	SCALE: 6:1	
FINISH: 4		CUSTOMER DRAWING		SHEET: 1 of 1

1471-9 (1/08)

63667

A