

4

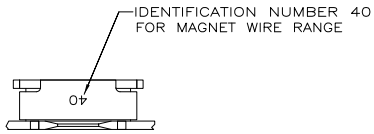
3

2

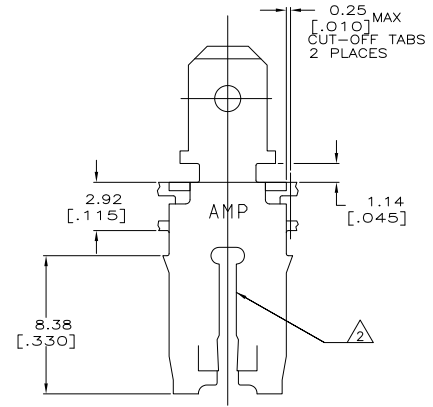
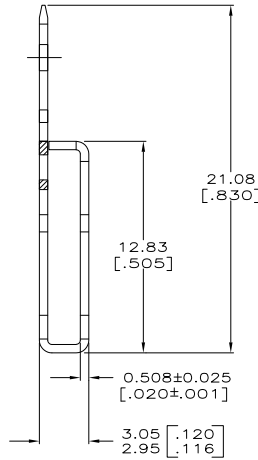
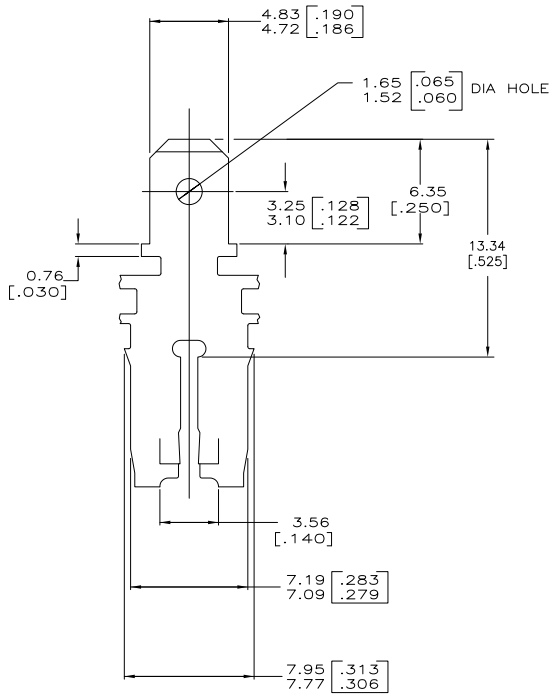
1

THIS DRAWING IS UNPUBLISHED. RELEASED FOR PUBLICATION.
 BY TYCO ELECTRONICS CORPORATION. ALL INTERNATIONAL RIGHTS RESERVED.

LOC	DIST	REVISIONS		
F	LNK	DESCRIPTION	DATE	BY
AF	50	B1	REVISED PER ECR-09-002564	12FEB09 HMR KR



- CONTINUOUS STRIP ON REELS WITH TERMINALS LOCATED ON 8.38±0.08 [.330±.003] CENTERS.
- SLOT TERMINATES A SINGLE MAGNET WIRE ONLY. COPPER RANGE: 1.45-1.29mm [#15-#16] AWG.
- AFTER INSERTION INTO PLASTIC HOLDER TAB PORTION MUST BE BENT OVER 45° TO 90° OR POTTED-IN TO PREVENT PULL-OUT WHEN MATING RECEPTACLE IS DISCONNECTED.
- VARNISH RESIST OVER 0.002032 [.000080] MIN TIN.



63666-1
PART NO.

THIS DRAWING IS A CONTROLLED DOCUMENT.		DRW MICHAEL S. FEHR 8/20/92	Tyco Electronics Corporation Harrisburg, PA 17105-3608	
DIMENSIONS: mm [INCHES]		CHK JEFF R. RUTH 8/21/92	NAME	
TOLERANCES UNLESS OTHERWISE SPECIFIED:		APP NELSON E. NEFF 8/28/92	TAB, 4.75 [.187] FASTON™ MAG-MATE™	
0 PLC ± -		PRODUCT SPEC 108-2012	SIZE CASE CODE DRAWING NO	
1 PLC ± -		APPLICATION SPEC 114-2066	RESTRICTED TO	
2 PLC ± 0.25 (010)		WEIGHT -	A2 00779 C-63666	
3 PLC ± -		FINISH	SCALE 6:1 SHEET 1 of 1 REV B1	
4 PLC ± -		ANGLES	CUSTOMER DRAWING	
MATERIAL H03 BRASS		FINISH		

63666

A