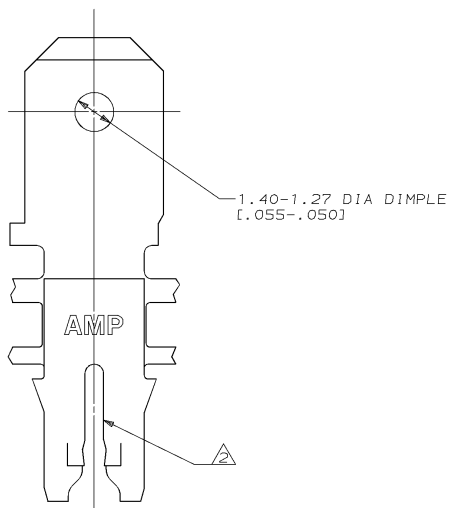
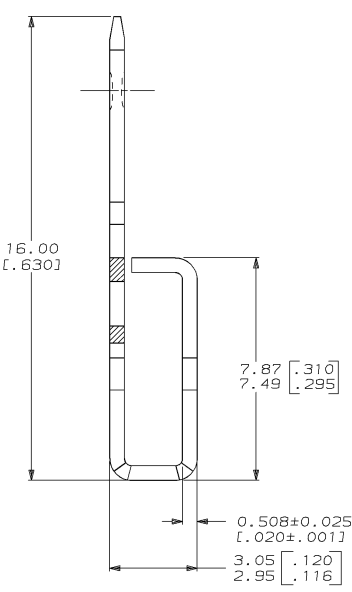
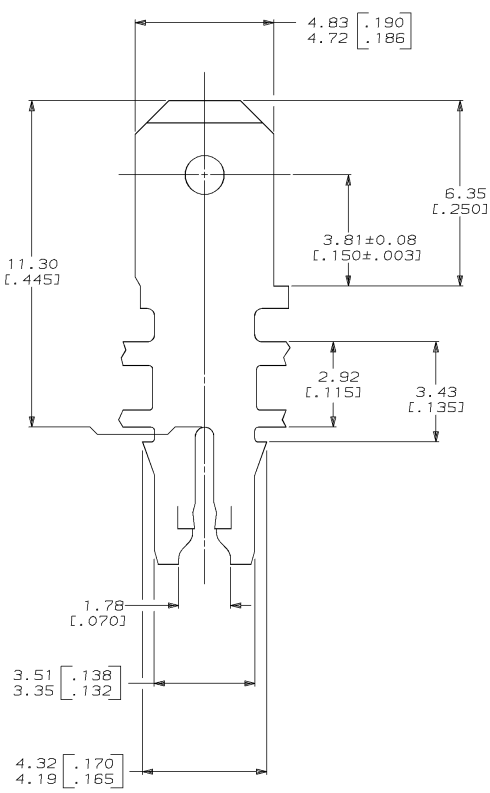
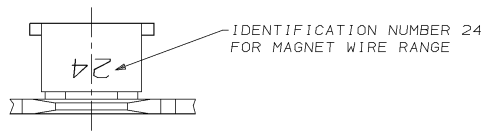


DRAWING MADE IN THIRD ANGLE PROJECTION
 THIS DRAWING IS UNPUBLISHED. RELEASED FOR PUBLICATION
 © COPYRIGHT 19 BY AMP INCORPORATED. ALL INTERNATIONAL RIGHTS RESERVED.

REVISIONS										
LOC	DIST	P	F	ZONE	LTR	DESCRIPTION	DATE	APPD	310CTRS	HF/NN
AF	50				C	REVISED & REDRAWN 0710-0485-95				

- 1 CONTINUOUS STRIP ON REELS WITH TERMINALS LOCATED ON 5.59±0.08 [.220±.003] CENTERS. SLOT TERMINATES A SINGLE MAGNET WIRE ONLY. COPPER RANGE: 0.91-1.15mm [#19-#17] AWG.
- 2 AFTER INSERTION INTO PLASTIC HOLDER TAB PORTION MUST BE BENT OVER 45° TO 90° OR POTTED-IN TO PREVENT PULL-OUT WHEN MATING RECEPTACLE IS DISCONNECTED.
- 3 VARNISH RESIST OVER 0.002032 [.000080] MIN TIN PER MIL-T-10727.



DO NOT SCALE PRINT. UNLESS SPECIFIED DIMENSIONS IN mm [INCHES] TOLERANCES ON :		DR 31/OCT/95 MICHAEL S. FEHER		63511-1 PART NO	
1 PLC DEC ± 0.25 [.010] 3 PLC DEC ± . ANGLES ± 1°		CHK 01/NOV/95 RICHARD GRZYBOWSKI		AMP AMP Incorporated Harrisburg, PA 17105-3608	
MATERIAL 4M BRASS		APPD 01/NOV/95 NELSON E. NEFF		NAME TERMINAL, TAB, 4.75 [.187] FASTON, TM MAG-MATE TM	
FINISH A		APPD 01/NOV/95 TERRY L. SHUTTER		DRAWING NO C-63511	
APPLICATION SPEC 114-2046		PRODUCT SPEC 108-2012		SIZE C 00779	
WEIGHT		SCALE 10:1		DRAWING NO C-63511	
				SHEET 1 OF 1	

THIS DRAWING IS A CONTROLLED DOCUMENT FOR AMP INCORPORATED. IT IS SUBJECT TO CHANGE AND THE CONTROLLING ENGINEERING ORGANIZATION SHOULD BE CONTACTED FOR THE LATEST REVISION.