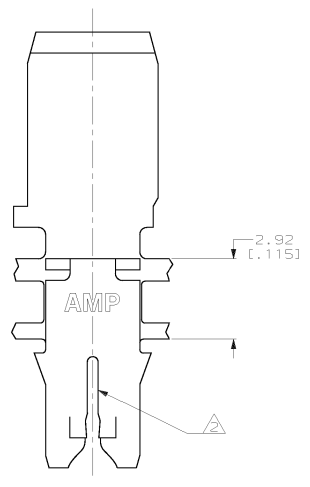
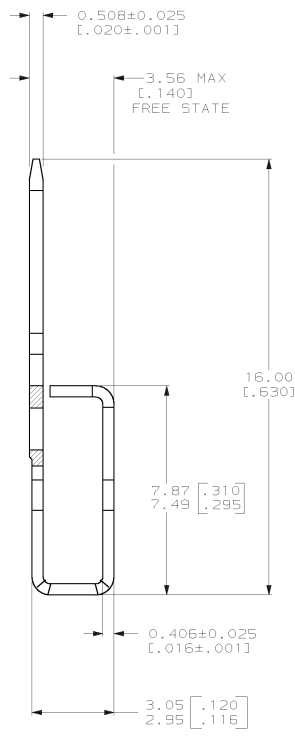
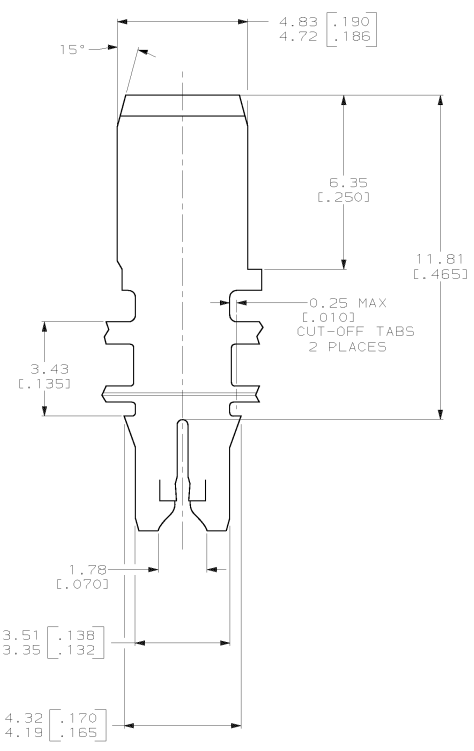


4 3 2 1

THIS DRAWING IS UNPUBLISHED. RELEASED FOR PUBLICATION. (C) COPYRIGHT IS BY AMP INCORPORATED. ALL RIGHTS RESERVED.

REV. NO.	DATE	BY	APP'D.	DESCRIPTION
AF 50	14 JUN 00	H	TF	ADDED -3 PER 0034-0354-00



- CONTINUOUS STRIP ON REELS (SPlice FREE) WITH TERMINALS LOCATED ON 5.59±0.08 [0.220±0.003] CENTERS. SLOT TERMINATES A SINGLE MAGNET WIRE ONLY. COPPER RANGE; 0.36-0.57mm [#27-#23] AWG.
  - AFTER INSERTION INTO PLASTIC HOLDER TAB PORTION MUST BE BENT OVER 45° TO 90° OR POTTED-IN TO PREVENT PULL-OUT WHEN MATING RECEPTACLE IS DISCONNECTED.
  - SPECIAL LABELING.
- PRELIMINARY - NOT FOR PRODUCTION.

STANDARD	63461-3
<del>REVERSE</del>	<del>63461-2</del>
STANDARD	63461-1
REELING	PART NUMBER

THIS DRAWING IS A CONTROLLED DOCUMENT.		DATE	24 JUL 98	BY	MICHAEL S. FEHNER
DRAWN BY		DATE	24 JUL 98	BY	JEFF B. BUTH
CHECKED BY		DATE	24 JUL 98	BY	ELBERT A. RANDOLPH
DIMENSIONS (INCHES)		PROJECT SPEC.	108-2012	APPLICATION SPEC.	114-2046
DIMENSIONS (MM)		FRGSE	0.002032 [0.000800]	MIN TIN	
MATERIAL		4M PRE-MILLED BRASS		WEIGHT	-
CUSTOMER DRAWING		SCALE	10:1	SHEET	1 OF 1

**AMP** Incorporated  
Harrisburg, PA 17105-3608

TAB, 4.75 [0.187] FASTON™  
MAG-MATE™

STANDARD CASE CODE (DRAWING NO.)  
A2 00779 C- 63461