

4

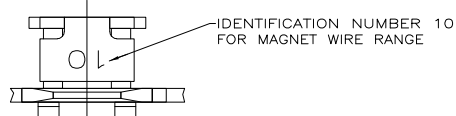
3

2

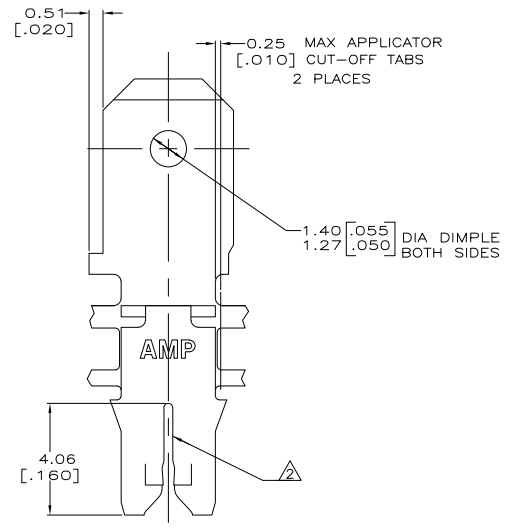
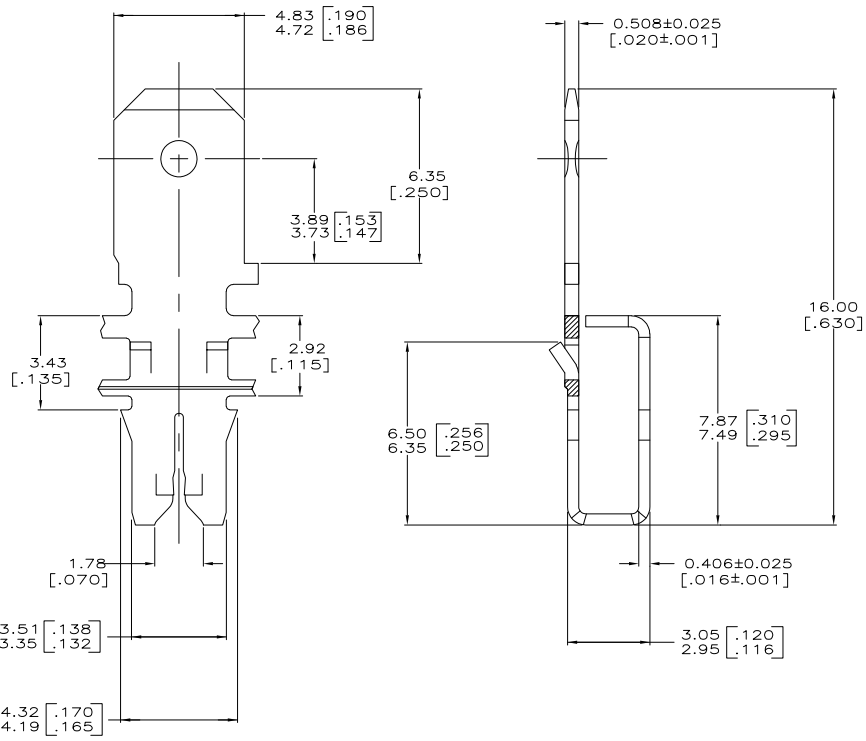
1

THIS DRAWING IS UNPUBLISHED. RELEASED FOR PUBLICATION
 © COPYRIGHT BY TYCO ELECTRONICS CORPORATION. ALL RIGHTS RESERVED.

LOC		DIBT		REVISIONS			
P	LR	DESCRIPTION	DATE	MIN	APD		
H	REV PER	OG3A-0730-04	060CT2004	RF	KR		



1 CONTINUOUS STRIP ON REELS WITH TERMINALS LOCATED ON 5.59±0.08 [.220±.003] CENTERS. SLOT TERMINATES EITHER A SINGLE OR DOUBLE MAGNET WIRE OF THE SAME SIZE AND TYPE. COPPER RANGE: 0.36-0.57mm [#27-#23] AWG.



THIS DRAWING IS A CONTROLLED DOCUMENT.		DRN	MICHAEL S. FEHR	8/28/93	Tyco Electronics Corporation Harrisburg, PA 17105-3608
		OK	LORI A. MAYER	7/7/93	
DIMENSIONS:		APPROVED BY:	T. SHUTTER	7/7/93	NAME
INCHES		PRODUCT SPEC	108-2012		TERMINAL, TAB,
0 PLG ± -		APPLICATION SPEC	114-2067		4.75 [.187] FASTON,
1 PLG ± -		FINISH	0.002032 [.000080] MIN TIN		MAG-MATE
2 PLG ± -		SIZE	A2	00779	C-63107
3 PLG ± -		RESTRICTED TO			
4 PLG ± -		SCALE	10:1	SHEET	1 OF 1
ANGLES ± -		REV			
MATERIAL		CUSTOMER DRAWING			

AMP 1471-9 REV 31MM2000

63107