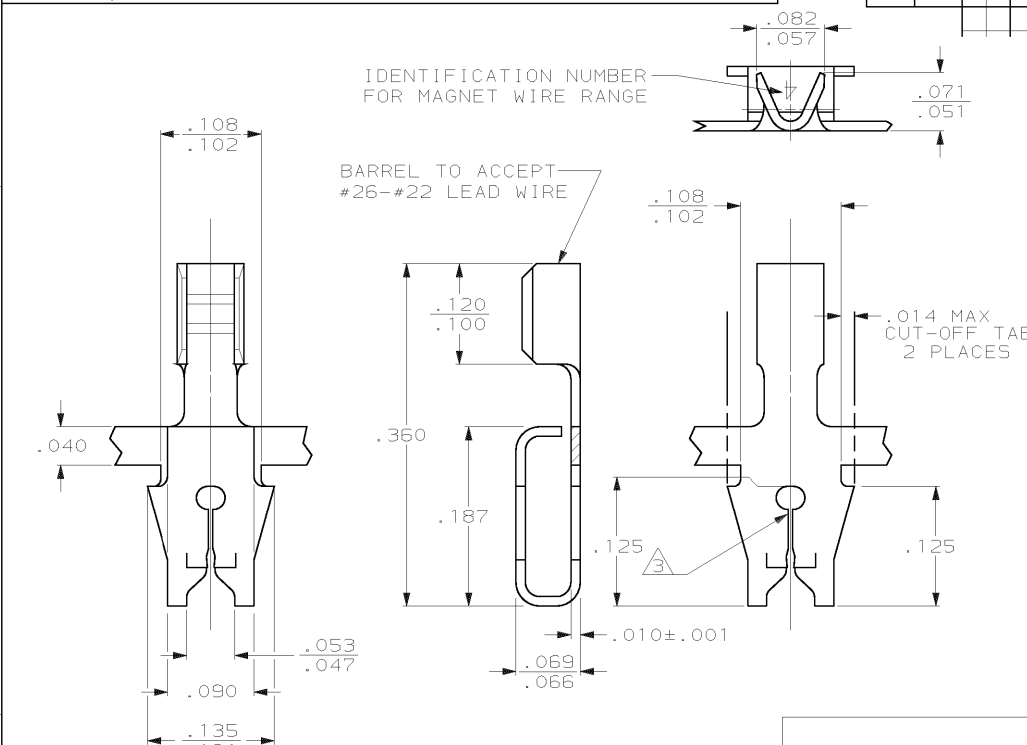


THIS DRAWING IS UNPUBLISHED. RELEASED FOR PUBLICATION .19
 © COPYRIGHT 19 BY AMP INCORPORATED. ALL INTERNATIONAL RIGHTS RESERVED.

LOC	DIST	REVISONS		
AF	50	ZONE	LTR	DESCRIPTION
			J	REV STATUS -2 PER 063A-0282-01
				DATE
				APPD
				16MAY01
				KR



- ① MAG-MATE CAVITY SPECIFICATION.
- ② CONTINUOUS STRIP ON REELS WITH TERMINALS LOCATED ON .200 CENTERS.
- ③ SLOT ACCEPTS #33-#31 AWG COPPER MAGNET WIRE.

MINI-APPLICATOR	63039-2
MAG-MATE INSERTER	63039-1
REELING	PART NO

.140	F	.055	.033	22	DO NOT SCALE PRINT. UNLESS SPECIFIED DIMENSIONS IN INCHES TOLERANCES ON: 2 PLC DEC ± 3 PLC DEC ± .010 ANGLES ±
			.029	24	
			.028	26	
MATERIAL					#4 HARD BRASS
FINISH					.000150 MIN TIN

AMP INCORPORATED Harrisburg, Pa. 17105	
NAME TERMINAL, F CRIMP, MAG-MATE™	
SIZE B	FSCM NO 00779
SCALE 10:1	DRAWING NO 63039
SHEET 1 OF 1	