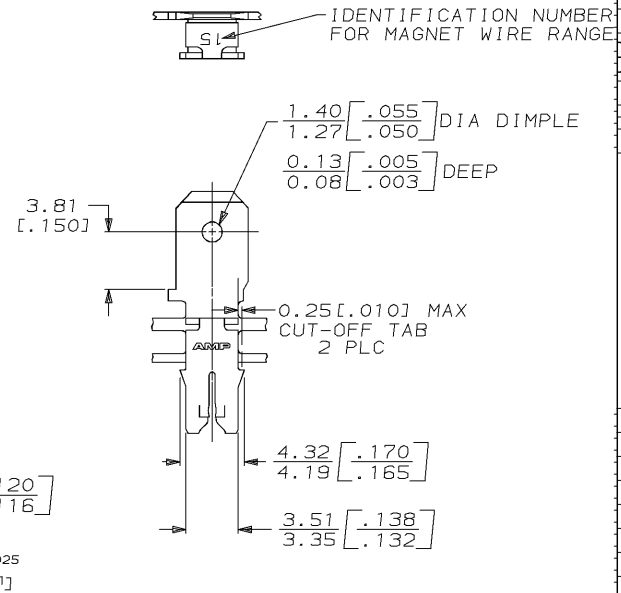
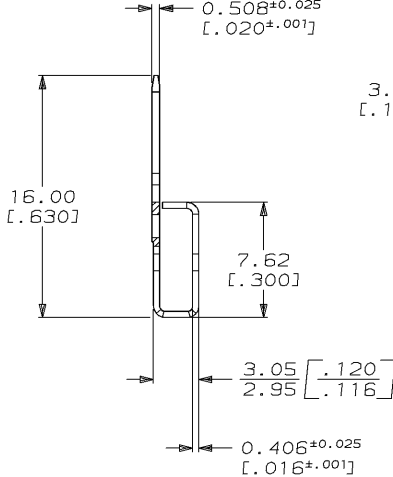
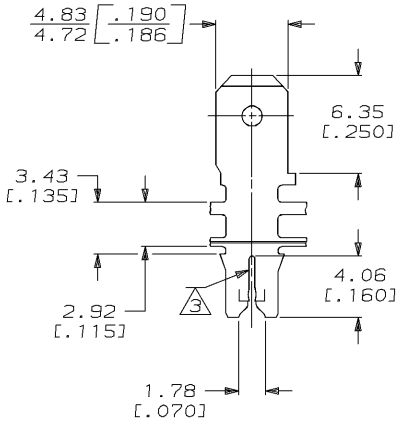


DRAWING MADE IN THIRD ANGLE PROJECTION

THIS DRAWING IS UNPUBLISHED. RELEASED FOR PUBLICATION, 19 .  
 © COPYRIGHT 19 BY AMP INCORPORATED. ALL INTERNATIONAL RIGHTS RESERVED.

| LOC | DIST | REVISIONS |     |                      |           | DATE  | APPD |
|-----|------|-----------|-----|----------------------|-----------|-------|------|
| P   | F    | ZONE      | LTR | DESCRIPTION          |           |       |      |
| AF  | 50   |           | R   | REV PER 0710-0231-94 | 17/AUG/94 | RB/NN |      |



1 CONTINUOUS STRIP ON REELS WITH TERMINALS LOCATED ON 5.59 [.220] CENTERS

△ SLOT TERMINATES A SINGLE MAGNET WIRE ONLY, COPPER 0.64-0.81mm [#22-#20] AWG

2 AFTER INSERTION INTO PLASTIC HOLDER TAB PORTION MUST BE BENT OVER 45° TO 90° OR POTTED-IN TO PREVENT PULL-OUT WHEN MATING RECEPTACLE IS DISCONNECTED



|                                                                                                                                              |                                                                                                                        |                                           |
|----------------------------------------------------------------------------------------------------------------------------------------------|------------------------------------------------------------------------------------------------------------------------|-------------------------------------------|
| VARNISH RESIST OVER TIN PL                                                                                                                   |                                                                                                                        | 62511-2                                   |
| TIN PL 0.002032 [.00080] MIN PER MIL-T-10727                                                                                                 |                                                                                                                        | 62511-1                                   |
| FINISH                                                                                                                                       |                                                                                                                        | PART NO                                   |
| DO NOT SCALE PRINT.<br>UNLESS SPECIFIED<br>DIMENSIONS IN mm (INCHES)<br>TOLERANCES ON:<br>2 PLC DEC ±<br>3 PLC DEC ± 0.25 (.010)<br>ANGLES ± | DR 12/4/88<br>D.E. SCHLUM<br>CHK 12/19/89<br>M.S. FEHER<br>APPD 12/19/89<br>N.E. NEFF<br>APPD 12/19/89<br>T.L. SHUTTER | AMP INCORPORATED<br>Harrisburg, Pa. 17105 |
| MATERIAL<br>#4M HARD<br>PRE-MILLED BRASS                                                                                                     | PRODUCT SPEC<br>108-2012                                                                                               | NAME<br>TAB, .187 FASTON™<br>MAG-MATE™    |
| FINISH<br>SEE TABLE                                                                                                                          | APPLICATION SPEC<br>114-2046                                                                                           | SIZE<br>B                                 |
| WEIGHT -                                                                                                                                     | SCALE<br>4:1                                                                                                           | CAGE CODE<br>00779                        |
|                                                                                                                                              |                                                                                                                        | DRAWING NO<br>62511                       |
|                                                                                                                                              |                                                                                                                        | SHEET<br>1 OF 1                           |