

4

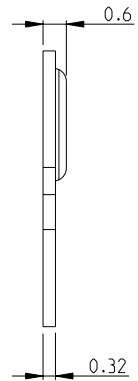
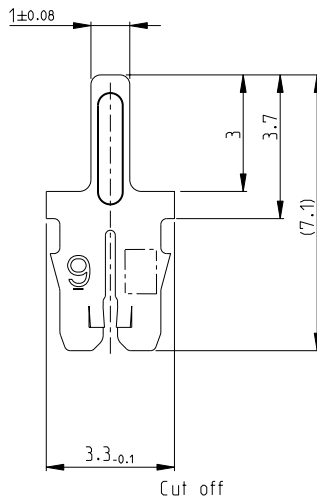
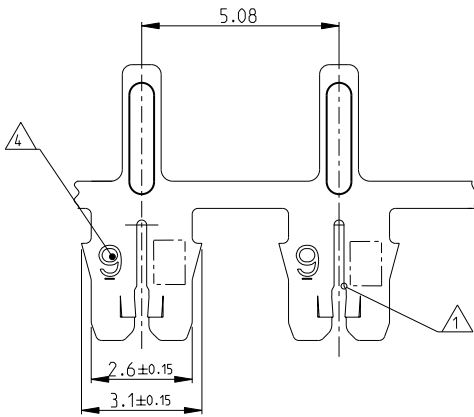
3

2

1

THIS DRAWING IS UNPUBLISHED. RELEASED FOR PUBLICATION 2011
 © COPYRIGHT 2011 ALL RIGHTS RESERVED.

LOC	DIST	REVISIONS				
P	LTR	DESCRIPTION	DATE	DWN	APVD	
A		INITIAL RELEASE	18JUL2011	PKS	RRP	
A1		CAVITY DWG INFO CORRECTED	29SEP2011	PKS	RRP	



Bemerkungen
NOTES

- 1 Geeignet fuer Kupferlackdraht Ø0.355...0.45mm
Einzeldraht oder zwei Draehle gleichen Durchmessers
SLOT ACCEPTS:
SINGLE OR DOUBLE MAGNET WIRE
SAME DIAMETERS 0.355...0.45mm DIA
- 2 Anlieferungszustand: Kontakte fortlaufend mit
Papierzwiseinlage auf Kunststoffspule aufgewickelt
Max. 5 Splice Stellen pro Spule
Splice Stellen nicht miteinander verbunden
DELIVERY STATE: CONTACTS CONTINUOUS REELED WITH PAPER
INTERLAYER ON PLASTIC-REEL.
MAX. 5 SPLICES PER REEL
SPLICES BE NOT BONDED TOGETHER.
- 3 Kontaktkammer nach Zeichnung } Spec. 411-18513
CAVITY ACCORDING DWG.
- 4 Kennziffer fuer Drahtgrossenbereich (9)
IDENTIFICATION NO. FOR MAGNET WIRE RANGE (9)
- 5 Materialdicke } 0.32 ± 0.02
STOCK THICKNESS

1987501-1	A	CuSn	PRETINNED	MAG-MATE .187 mod.
PART NO	REV.	MATERIAL	SURFACE COLOR	DESCRIPTION

THIS DRAWING IS A CONTROLLED DOCUMENT.

DIMENSIONS: mm	TOLERANCES UNLESS OTHERWISE SPECIFIED:	0 PLC ±0.2 1 PLC ±0.2 2 PLC ±0.2 3 PLC ±0.2 4 PLC ±0.2 ANGLES ±1°	DWN J. KOHLE 31JUL2008 CHK S. ZABECK 04AUG2008 APVD T. KIENNER 04AUG2008	TE Connectivity	
	MATERIAL SEE TABLE	FINISH SEE TABLE	NAME MAG-MATE Kontakt mit Loetpin	PRODUCT SPEC	RESTRICTED TO
			APPLICATION SPEC	SIZE A3	CAGE CODE 00779
			WEIGHT	DRAWING NO C=1987501	
CUSTOMER DRAWING				SCALE 10:1	SHEET 1 of 1
				REV A1	