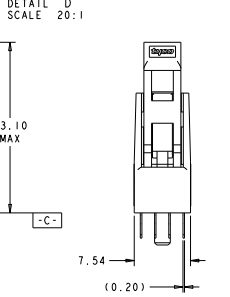
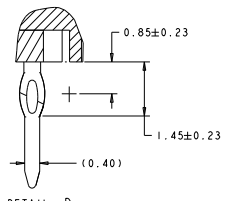
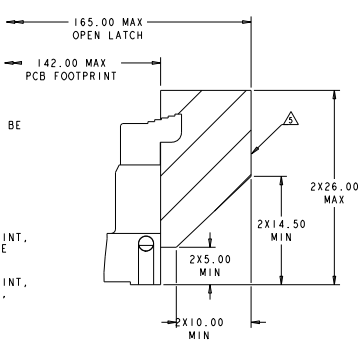


REVISIONS			
REV	DESCRIPTION	DATE	BY
E3	REVISED PER ECR-11-013889	1/20/11	S.M. C.W.
F	REVISED PER ECR-11-018341	5/20/11	S.M. C.W.



- △ MATERIALS:
HOUSING: HIGH TEMPERATURE, UL94 V-0
EXTRACTOR: HIGH TEMPERATURE THERMOPLASTIC
SUPPORT PLATE: LCP, UL94 V-0
- △ INTERFACE FINISH:
(1) 0.00076 MIN THK GOLD OVER 0.00127 MIN THK NICKEL
(2) 0.00038 MIN THK GOLD OVER 0.00127 MIN THK NICKEL
- △ FINISHED HOLE SIZE 0.15 MAX ANNULAR RING.
COPPER PLATING: 0.025-0.050
TIN-LEAD PLATING: 0.0038-0.0124
FOR PTH TIN-LEAD PLATING ONLY, FINISHED HOLE TOLERANCE MAY BE +0.05/-0.058 IN ZONE I, AND ±0.076 IN ZONE II
- △ KEEP OUT ZONE.
- △ KEEP OUT AREA RESERVED FOR SOCKET EXTRACTORS, BOTH ENDS.
- 6. APPROXIMATE SEATING FORCE WILL BE 3781-5338N (850-1200 lb) FOR THE 240 POSITION SOCKET ASSEMBLY.
- △ HOLE INDICATED IS PART OF THE STANDARD 240 POSITION FOOTPRINT, REQUIRED FOR THE SOLDERTAIL VERSION, MAY BE OMITTED FOR THE PRESS FIT VERSION.
- △ HOLE INDICATED IS PART OF THE STANDARD 240 POSITION FOOTPRINT, REQUIRED FOR THE SOLDERTAIL AND 2 POSTS PRESS FIT VERSIONS, MAY BE OMITTED FOR 1 POST PRESS FIT VERSION.
- △ COMPLIANT PIN FINISH: 0.00254 MIN THICK MATTE TIN OVER 0.00127 MIN THICK NICKEL.
- △ COMPLIANT PIN FINISH: 0.00254 MIN THICK TIN-LEAD OVER 0.00127 MIN THICK NICKEL.
- II. FOR HANDLING PROCESS AT CUSTOMER'S LINE, PAY ATTENTION NOT TO TOUCH EVERY CONTACT TIPS.
- △ LOWER RESISTANCE TYPE



DIM A	COMPLIANT PIN	INTERFACE FINISH	SUPPORT PLATE COLOR	EXTRACTOR COLOR	HOUSING COLOR	DESCRIPTION	PART NUMBER
2.40	△	(2)	BLACK	AMBER	BLACK		3-2013266-4
			BLACK	NATURAL	BLACK		3-2013266-3
			BLACK	AMBER	BLACK		3-2013266-2
3.30	△	(2)	BLACK	NATURAL	BLACK		3-2013266-1
			BLACK	AMBER	BLACK		2-2013266-4
			BLACK	NATURAL	BLACK		2-2013266-3
2.40	△	(1)	BLACK	AMBER	BLACK		2-2013266-2
			BLACK	NATURAL	BLACK		1-2013266-7
			BLACK	NATURAL	BLACK		1-2013266-6
3.38	△	(2)	BLACK	NATURAL	BLACK	1 POST	1-2013266-5
			NATURAL	BLACK	BLACK		1-2013266-4
			BLUE	NATURAL	BLUE		1-2013266-3
2.40	△	(1)	NATURAL	NATURAL	NATURAL		1-2013266-2
			BLACK	BLACK	BLACK		1-2013266-1
			NATURAL	NATURAL	NATURAL		2013266-7
3.38	△	(2)	BLACK	NATURAL	NATURAL		2013266-6
			BLACK	NATURAL	NATURAL		2013266-5
			BLACK	NATURAL	NATURAL		2013266-4
3.38	△	(2)	BLACK	NATURAL	NATURAL		2013266-3
			BLACK	NATURAL	NATURAL		2013266-2
			BLACK	NATURAL	NATURAL		2013266-1

THIS DRAWING IS A CONTROLLED DOCUMENT

REVISED PER ECR-11-013889 1/20/11

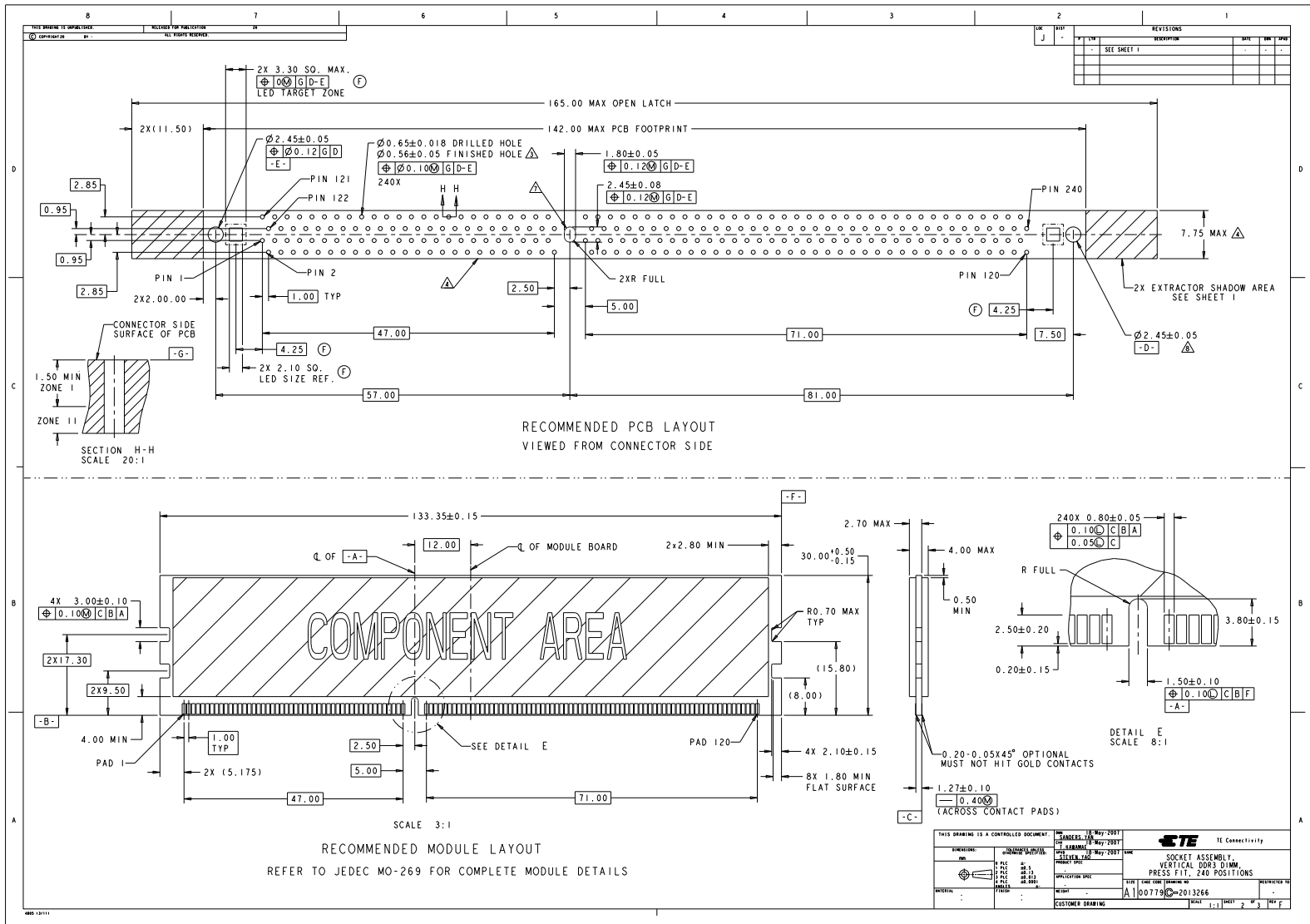
REVISED PER ECR-11-018341 5/20/11

TE Connectivity

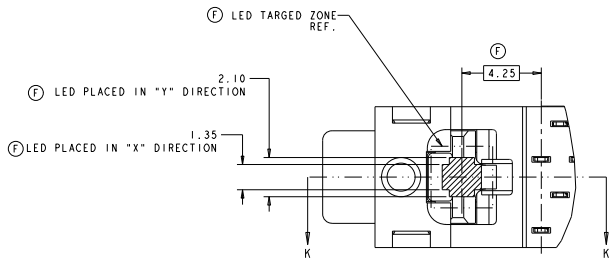
SOCKET ASSEMBLY, VERTICAL DORS DIRECTION, PRESS FIT, 240 POSITIONS

FILE: 1007790-2013266

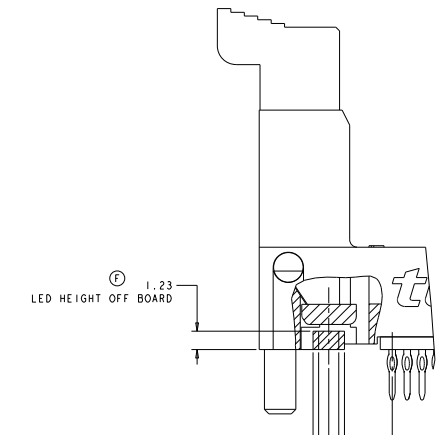
CUSTOMER DRAWING



REV.	DATE	DESCRIPTION	BY	CHK
1		SEE SHEET 1		



PARTIAL BOTTOM VIEW
SCALE 10:1



SECTION K-K
SCALE 8:1

DIM A	COMPLIANT PIN	INTERFACE FINISH	SUPPORT PLATE COLO	EXTRACTOR COLOR	HOUSING COLOR	DESCRIPTION	PART NUMBER
③ 2.40	▲	(1)	BLACK	NATURAL	BLACK	1 POST	3-2013266-8
			NATURAL	NATURAL	NATURAL		3-2013266-7
			BLACK	AMBER	BLACK		3-2013266-6
③ 3.30	▲	(1)	BLACK	BLACK	BLUE	1 POST	3-2013266-5
			BLACK	BLACK	BLACK		2-2013266-9
			BLACK	NATURAL	BLACK		2-2013266-8
			NATURAL	NATURAL	NATURAL		2-2013266-7
	▲		BLACK	AMBER	BLACK		2-2013266-6
			BLUE	BLACK	BLUE		2-2013266-5

THIS DRAWING IS A CONTROLLED DOCUMENT

REVISED: 14 MAY 2007
REVISED: 14 MAY 2007
REVISED: 14 MAY 2007

EXAMINED: 14 MAY 2007
DRAWN: 14 MAY 2007
CHECKED: 14 MAY 2007

DATE: 14 MAY 2007

FILE: 1007190-2013266

CUSTOMER DRAWING

TE Connectivity

SOCKET ASSEMBLY, VERTICAL, 240 POSITIONS, PRESS FIT, 240 POSITIONS

1007190-2013266

1 of 2