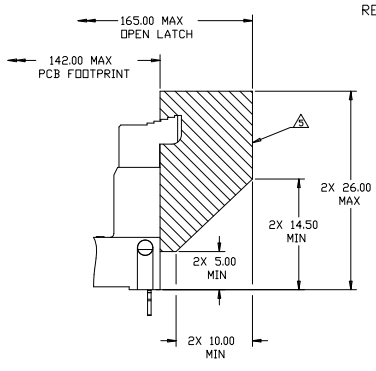


FOR 1.60 (.063") THK PCB
 FOR 2.36 (.093") THK PCB
 FOR 3.18 (.125") THK PCB



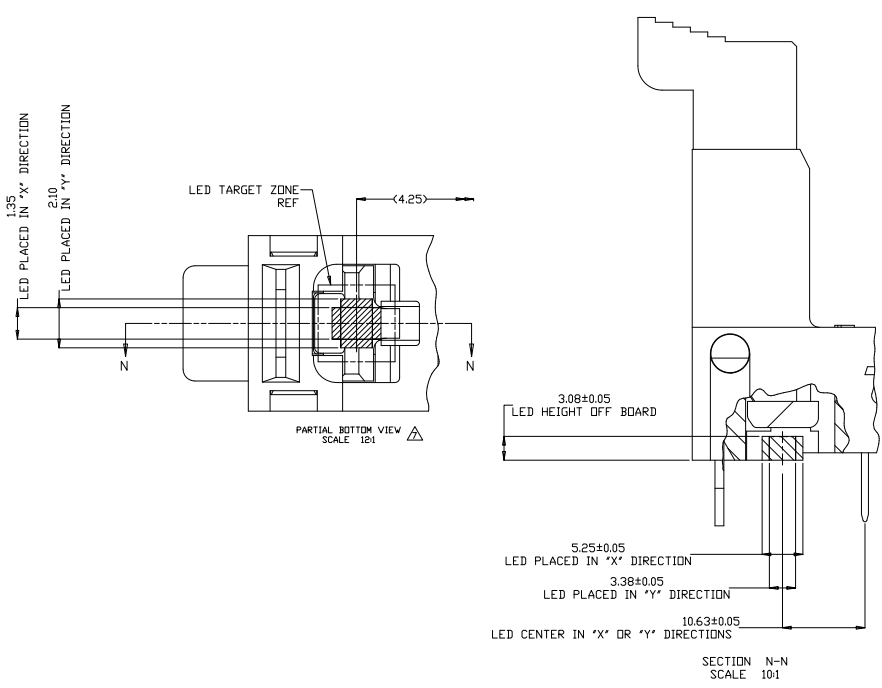
RETENTION BARB TYPE SHOWN ON ALL SHEET UNLESS OTHERWISE NOTED

PLEASE CHECK SHEET 2 FOR PART LIST

- ▲ MATERIALS:
- HOUSING: HIGH TEMPERATURE NYLON, UL94 V-0
 - EXTRACTOR: HIGH TEMPERATURE THERMOPLASTIC
 - CONTACTS: COPPER ALLOY
 - RETENTION BARB: BRASS, TIN PLATED
- ▲ INTERFACE FINISH:
- 0.00038 MIN THK GOLD OVER 0.00127 MIN THK NICKEL.
 - 0.00009 MIN THK GOLD OVER 0.00127 MIN THK NICKEL.
 - 0.00076 MIN THK GOLD OVER 0.00127 MIN THK NICKEL.
 - 0.00051 MIN THK GOLD OVER 0.00127 MIN THK NICKEL.
- ▲ FINISHED HOLE SIZE: 0.15 MAXIMUM ANNULAR RING.
- ▲ KEEP OUT ZONE.
- ▲ KEEP OUT AREA RESERVED FOR SOCKET EXTRACTORS, BOTH ENDS.
- ▲ SOLDER TAIL FINISH: 0.00300 MIN THK MATTE TIN OVER 0.00127 MIN THK NICKEL.
- ▲ LED LOCATION AS APPLICABLE PER CUSTOMER.
- ▲ DATUM [-G-] IS CONNECTOR SIDE SURFACE OF PCB.

THIS DRAWING IS A CONTROLLED DOCUMENT.		DESIGNED BY: ED. ZSOU	DRAWN BY: ED. ZSOU	DATE: 108-60071	REVISED: 114-13154	DATE: 11-02-10	BY: R.M.C.W.	CHK: R.M.C.W.	APP: R.M.C.W.
DRAWING NO: 108-60071		REVISED: 114-13154		DATE: 11-02-10		BY: R.M.C.W.		CHK: R.M.C.W.	
CUSTOMER DRAWING		DATE: 11-02-10		BY: R.M.C.W.		CHK: R.M.C.W.		APP: R.M.C.W.	

REV	DATE	DESCRIPTION	BY	APP
00		SEE SHEET 1		



RETENTION BARB	HOUSING STYLE	EXTRACTOR COLOR	HOUSING COLOR	CONTACT INTERFACE	TAIL LENGTH	PART NUMBER
NATURAL	BLUE(2935U)	0.00038 MIN (15u")	2.67	6-1932031-2		
BLACK	BLACK	0.00051 MIN (20u")	2.67	6-1932031-1		
NATURAL	BLACK	0.00051 MIN (20u")	2.67	6-1932031-0		
NATURAL	NATURAL	0.00076 MIN (30u")	3.18	5-1932031-9		
NATURAL	BLUE(2935U)	0.00038 MIN (15u")	3.18	5-1932031-8		
BLACK	BLACK	0.00076 MIN (30u")	4.00	5-1932031-2		
NATURAL	BLUE(284C)	0.00038 MIN (15u")	3.18	5-1932031-1		
NATURAL	BLACK	0.00038 MIN (15u")	3.18	4-1932031-9		
NATURAL	GREEN(368C)	0.00038 MIN (15u")	3.18	4-1932031-7		
NATURAL	BLUE (284C)	0.00038 MIN (15u")	3.18	3-1932031-4		
NATURAL	BLUE (284C)	0.00038 MIN (15u")	2.67	2-1932031-6		
BLACK	BLACK	0.00008 MIN (3u")	2.67	2-1932031-5		
NATURAL	BLACK	0.00008 MIN (3u")	4.00	1-1932031-5		
NATURAL	BLACK	0.00038 MIN (15u")	4.00	1-1932031-2		
NATURAL	BLACK	0.00038 MIN (15u")	3.18	1-1932031-1		
NATURAL	NATURAL	0.00038 MIN (15u")	2.67	1-1932031-0		
NATURAL	NATURAL	0.00038 MIN (15u")	2.67	1932031-7		
NATURAL	NATURAL	0.00038 MIN (15u")	3.18	1932031-5		
NATURAL	NATURAL	0.00038 MIN (15u")	2.67	1932031-4		

THIS DRAWING IS A CONTROLLED DOCUMENT. (REV. 25/04) (REV. 25/04)

TE Connectivity

SOCKET ASSEMBLY, VERTICAL DORSI DMM/SOLDER TAIL, 240 POSITION/ANCHOR RESISTANCE TYPE

108-60071

114-13154

100779

1932031

DATE 04/11/14

SIZE A1

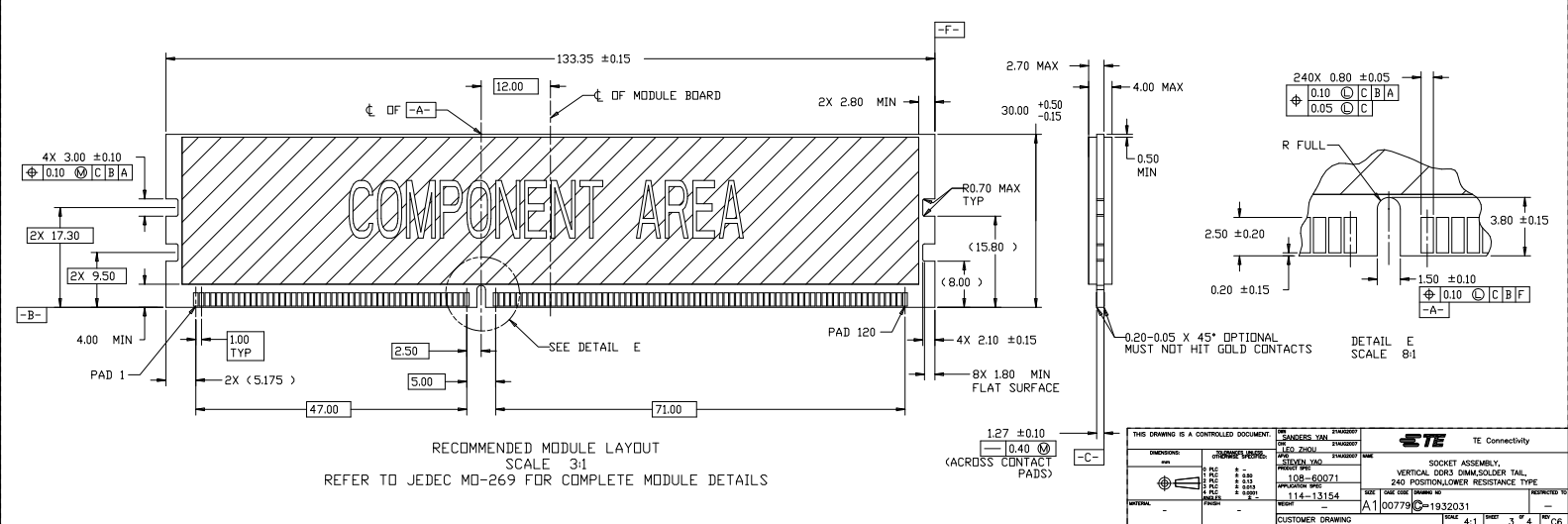
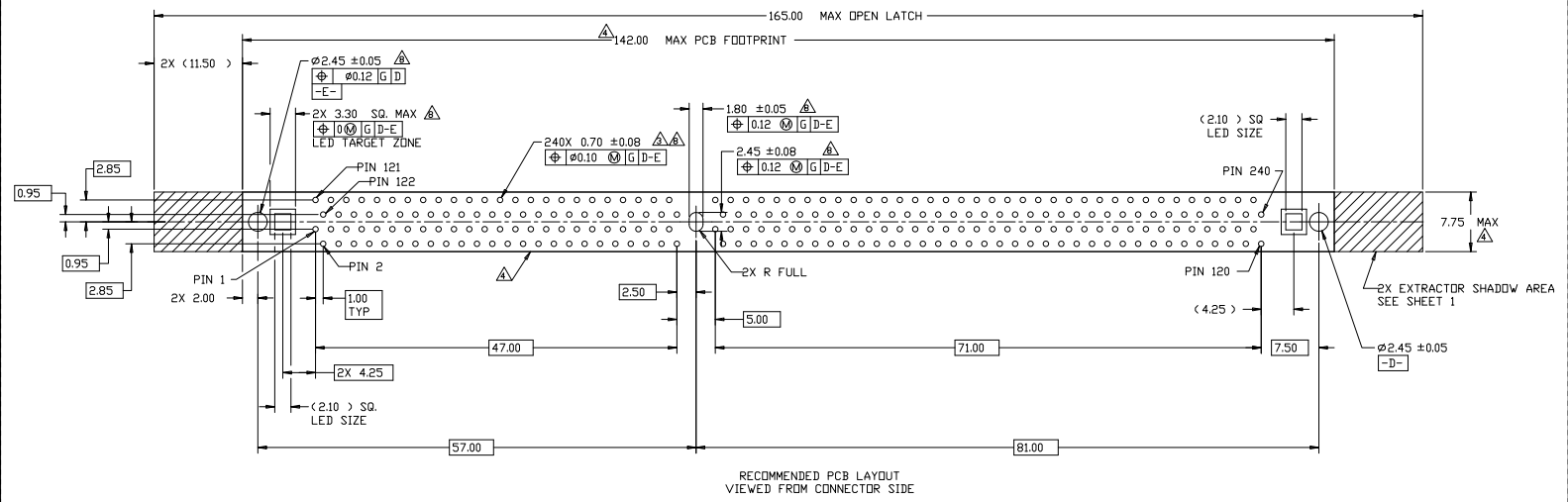
REV 4.1

SHEET 2

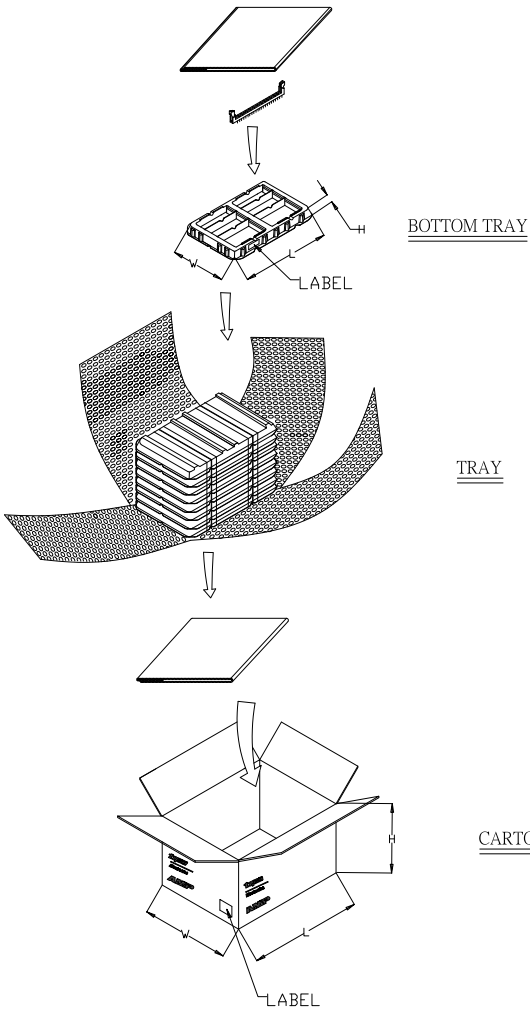
TOTAL 4

CE

THIS DRAWING IS UNPUBLISHED		NECESSARY FOR REPRODUCTION		ALL RIGHTS RESERVED		REVISES		DATE	BY	APP'D
ES	00	TR	TM	DESCRIPTION	DATE	BY	APP'D	-	-	-
								SEE SHEET 1		



THIS DRAWING IS A CONTROLLED DOCUMENT		DESIGNED BY	STANDARD	TE Connectivity	
DRAWN BY		REVISED BY	DATE	SOCKET ASSEMBLY, VERTICAL, GDRS, DIMA SOLDER TAIL, 240 POSITION, LOWER RESISTANCE TYPE	
CHECKED BY		108-60071		DRAWN TO	
APPROVED BY		114-13154		PART NO.	
DATE		A1	00779	C=1932031	
CUSTOMER DRAWING		PAGE 4:1		OF 4	



- NOTES:
1. MATERIAL:
 - 1.1 TRAY: PVC
 - 1.2 SHIPPING CARTON : CORRUGATED FIBERBOARD
 2. DIMENSION :
 - 2.1 TRAY : L=363, W=255, H=33
 - 2.2 SHIPPING CARTON : L=375, W=265, H=280
 3. QUANTITY :
 - 3.1 PRIMARY PACKING : 50 PCS/TRAY
 - 3.2 SECONDARY PACKING : 8 TRAY/CARTON(400PCS)
 4. WEIGHT :
 - 4.1 NET WEIGHT : 3.76 KG
 - 4.2 GROSS WEIGHT: 6.00 KG

THIS DRAWING IS A CONTROLLED DOCUMENT.		DESIGNED BY ED. ZHOU	DRAWN BY S.W. ZHANG	TE Connectivity	
DIMENSIONS mm		DATE 10B-60071	REV 114-13154	SOCKET ASSEMBLY, VERTICAL, DDR3 DIMM SOLDER TAIL, 240 POSITION, LOCKER RESISTANCE TYPE	
APPROVED BY 		DATE A1	ISSUE NO. 00779	REV G=1932031	CHECKED BY DATE SHEET 4
CUSTOMER DRAWING				SCALE UNIT 4 CE	