

4

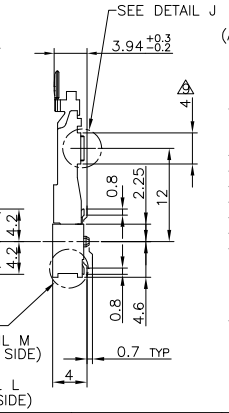
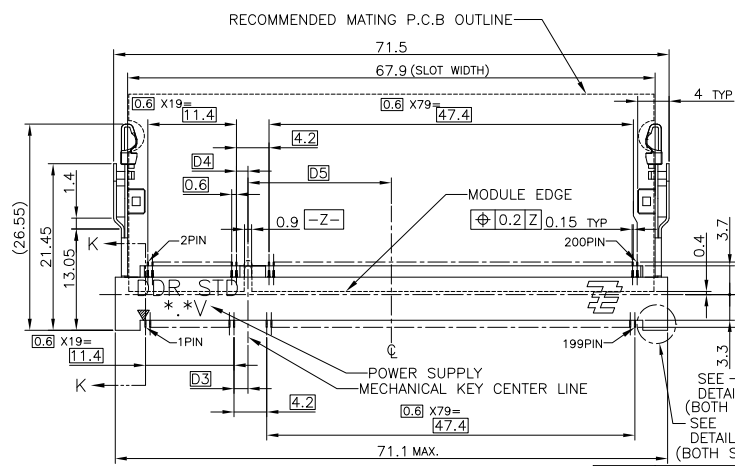
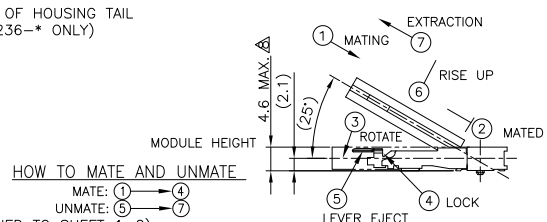
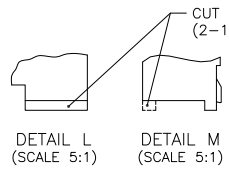
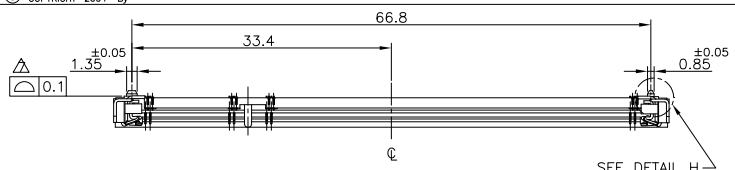
3

2

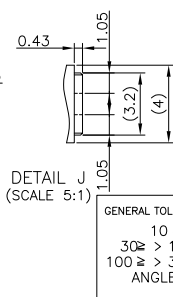
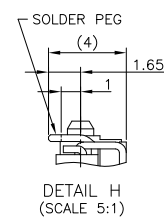
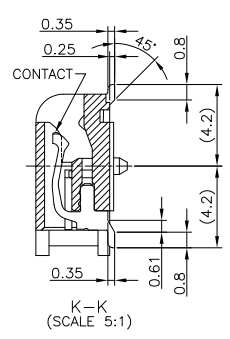
1

THIS DRAWING IS UNPUBLISHED. RELEASED FOR PUBLICATION NOV. 2004.  
 COPYRIGHT 2004 BY -- ALL RIGHTS RESERVED.

LOC	DIST	REVISIONS			
P	LTR	DESCRIPTION	DATE	DWN	APVD
R2		REVISED PER ECO-11-005033	26MAR11	RK	HMR



- HOW TO MATE AND UNMATE (APPLIED TO SHEET 1-2)
- MATE: ① → ④  
 UNMATE: ⑤ → ⑦
- MATERIAL ; HOUSING: HIGH TEMPERATURE THERMO PLASTIC UL94V-0  
 CONTACT: COPPER ARROY  
 LOCK LEVER: STAINLESS STEEL
  - FINISH ; CONTACT AREA: GOLD FLASH ON 0.0013MIN ALL OVER NICKEL.  
 SOLDERING AREA: GOLD FLASH PLATING.  
 LOCK LEVER: TIN PLATING.
  - MECHANICAL KEY POSITION OF CONNECTOR SEE TABLE.
  - TOLERANCES NON-CUMULATIVE.
  - NOT TO SCALE.
  - INSIDE MUST BE RESIST COAT EXCEPT SOLDER PATTERN.
  - COPLANARITY : 0.1 MAX.
  - THE FLOATING VALUE BY SOLDERING IS NOT INCLUDED.
  - NOT MATING CONDITION.
  - IF THE MODULE DOESN'T INSERT AND LOCK IN THE LATCH SMOOTHLY, OPEN WIDE BOTH LATCHES BY MANUAL. AND THE MODULE MUST BE INSERTED AND LOCKED IN THE LATCH.
  - FINISH ; CONTACT AREA: GOLD 0.00076MIN PLATING ON 0.0013MIN ALL OVER NICKEL.  
 SOLDERING AREA: GOLD FLASH PLATING.  
 LOCK LEVER: TIN PLATING.



FINISH	TOOLING STATUS	REMARK	POWER SUPPLY	D5	D4	D3	POS	PART NO.
△	AVAILABLE	POROSITY SEALING	1.8V (DDR2)	17.55	2.4	2.7	200	1827236-6
△	AVAILABLE	CUT OUT OF POROSITY SEALING	1.8V (DDR2)	17.55	2.4	2.7	200	3-1827236-4
△	AVAILABLE	CUT OUT OF HOUSING TAIL	1.8V (DDR2)	17.55	2.4	2.7	200	2-1827236-4
△	AVAILABLE	BOSSLESS	1.8V (DDR2)	17.55	2.4	2.7	200	1-1827236-4
△	AVAILABLE	— H —	1.8V (DDR2)	17.55	2.4	2.7	200	1827236-4
— H —	NOT AVAILABLE	— H —	2.5V (DDR1)	18.45	1.5	1.8	200	—

GENERAL TOLERANCE  
 10 ≥ : ±0.2  
 30 ≥ > 10: ±0.25  
 100 ≥ > 30: ±0.3  
 ANGLES: ±3°

THIS DRAWING IS A CONTROLLED DOCUMENT.

DIMENSIONS: MM

TOLERANCES UNLESS OTHERWISE SPECIFIED:

0	PLC	±
1	PLC	±
2	PLC	±
3	PLC	±
4	PLC	±
5	PLC	±
6	PLC	±
7	PLC	±
8	PLC	±
9	PLC	±
10	PLC	±
11	PLC	±
12	PLC	±
13	PLC	±
14	PLC	±
15	PLC	±
16	PLC	±
17	PLC	±
18	PLC	±
19	PLC	±
20	PLC	±
21	PLC	±
22	PLC	±
23	PLC	±
24	PLC	±
25	PLC	±
26	PLC	±
27	PLC	±
28	PLC	±
29	PLC	±
30	PLC	±
31	PLC	±
32	PLC	±
33	PLC	±
34	PLC	±
35	PLC	±
36	PLC	±
37	PLC	±
38	PLC	±
39	PLC	±
40	PLC	±
41	PLC	±
42	PLC	±
43	PLC	±
44	PLC	±
45	PLC	±
46	PLC	±
47	PLC	±
48	PLC	±
49	PLC	±
50	PLC	±

MATERIAL: FINISH

APPROVED: DWN B.WONG, CHK C.WANG, APVD S.YAO

DATE: 20JUL10

PRODUCT SPEC: 108-5701

APPLICATION SPEC

WEIGHT: 3.2 g

CUSTOMER DRAWING

SCALE: 2:1

SHEET: 1 of 4

REV: R2

RESTRICTED TO

4

3

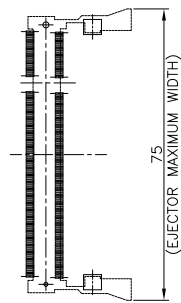
2

1

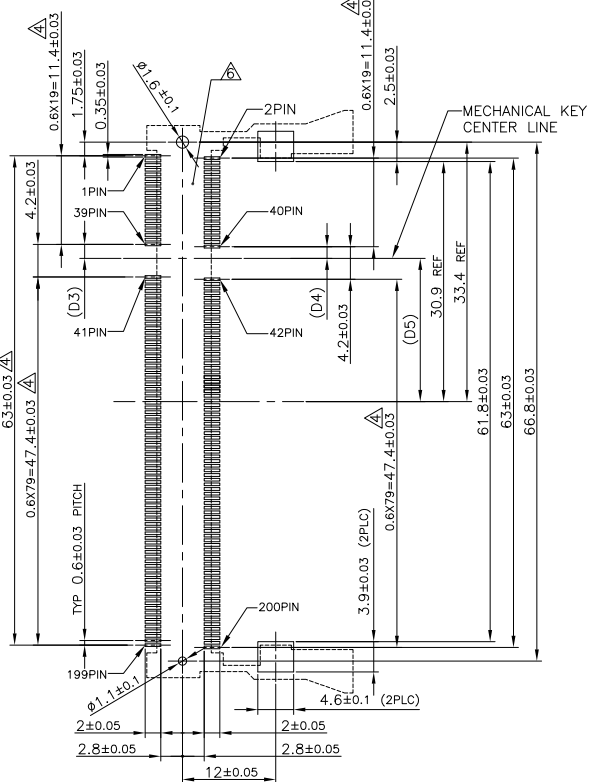
THIS DRAWING IS UNPUBLISHED. RELEASED FOR PUBLICATION NOV. 2004.  
 © COPYRIGHT 2004 By - ALL RIGHTS RESERVED.

LOC	DIST	REVISIONS					
J		P	LTR	DESCRIPTION	DATE	DWN	APVD
				SEE SHEET 1			

REFERENCE P.C. BOARD PATTERN LAYOUT  
 (CONNECTOR MOUNTING SIDE)



REAL SIZE (SCALE 1:1)



1.8V	17.55	2.4	2.7
2.5V	18.45	1.5	1.8
POWER SUPPLY	D5	D4	D3

THIS DRAWING IS A CONTROLLED DOCUMENT.		DWN	TE Connectivity	
DIMENSIONS: MM		CHK		
TOLERANCES UNLESS OTHERWISE SPECIFIED: 0 PLC ± 1 PLC ± 2 PLC ± 3 PLC ± 4 PLC ± ANGLES ±		APVD	NAME	
MATERIAL		FINISH	DDR1 & DDR2 SODIMM SOCKET 0.6mm PITCH 200POS LOW PROFILE STANDARD TYPE (LATCH DIRECT SOLDERING TYPE)	
			SIZE	RESTRICTED TO
			A3	
			CAGE CODE	
			00779	
			DRAWING NO	
			1827236	
			WEIGHT	
			CUSTOMER DRAWING	
			SCALE	2:1
			SHEET	2 of 4
			REV	R2

4

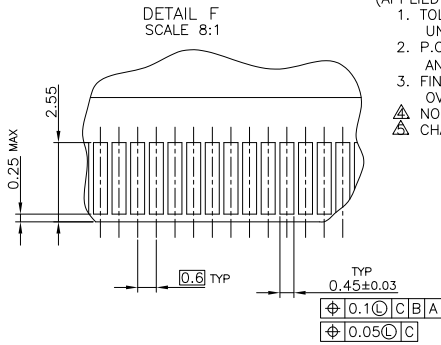
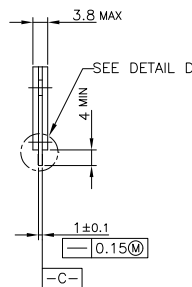
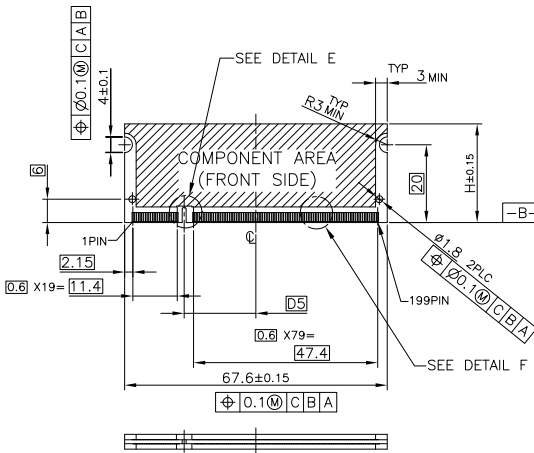
3

2

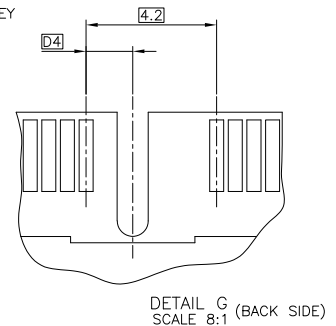
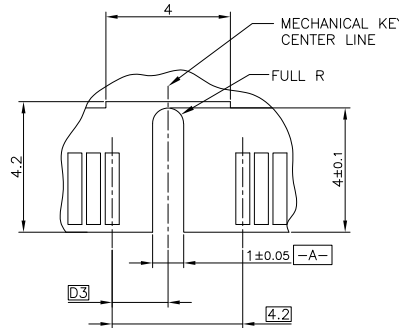
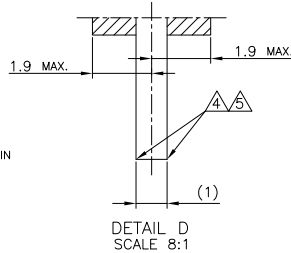
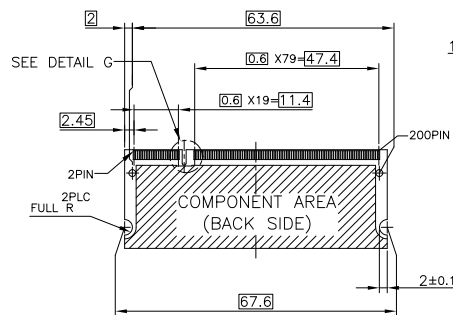
1

THIS DRAWING IS UNPUBLISHED. RELEASED FOR PUBLICATION NOV. 2004. ALL RIGHTS RESERVED.  
 COPYRIGHT 2004 By -

LOC	DIST	REVISIONS				
P	LTR	DESCRIPTION	DATE	DWN	APVD	
-	-	SEE SHEET 1	-	-	-	



- (APPLIED TO SHEET 3)
1. TOLERANCES ON ALL DIMENSIONS ±0.15 UNLESS OTHERWISE SPECIFIED.
  2. P.C.BOARD THICKNESS APPLIES ACROSS TABS AND INCLUDES PLATING AND/OR METALIZATION.
  3. FINISH OF PAD : GOLD PLATING 0.00076 MIN. OVER Ni PLATING 0.002MIN.
- ▲ NO BURR  
 ▲ CHAMFER 0.25 MAX x 45° IF EXIST.



RECOMMENDED MATING P.C.B CONFIGURATION

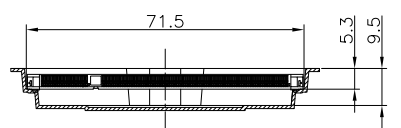
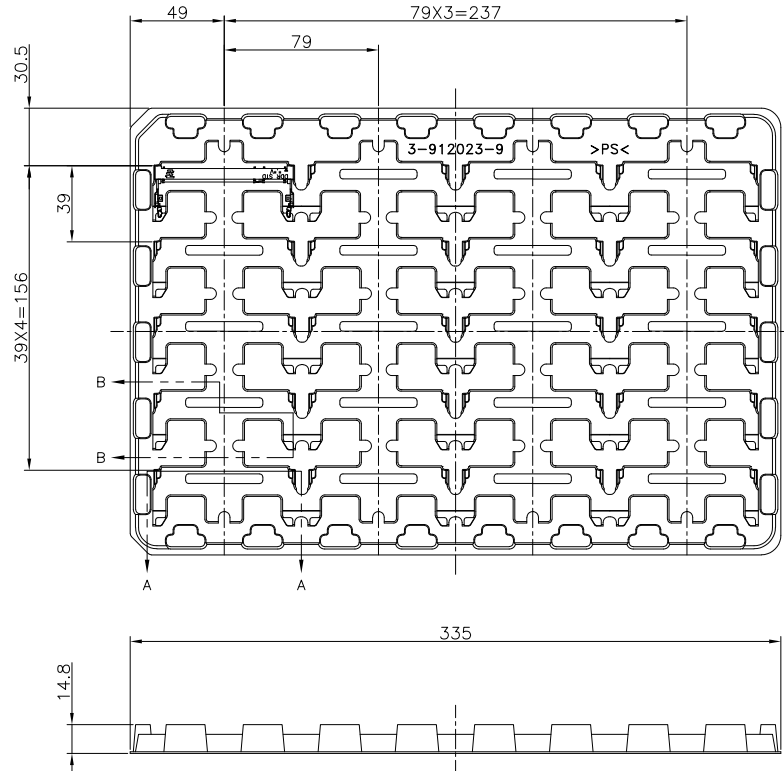
31.75	1.8V	17.55	2.4	2.7
25.4	2.5V	18.45	1.5	1.8
H	POWER SUPPLY	D5	D4	D3

THIS DRAWING IS A CONTROLLED DOCUMENT.

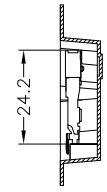
DIMENSIONS:	TOLERANCES UNLESS OTHERWISE SPECIFIED:	DWN	CHK	APVD	NAME
MM	0. PLC ±				TE Connectivity
	1. PLC ±				DDR1 & DDR2 SODIMM SOCKET 0.6mm PITCH
	2. PLC ±				200POS LOW PROFILE STANDARD TYPE
	3. PLC ±				(LATCH DIRECT SOLDERING TYPE)
	4. PLC ±				SIZE CAGE CODE DRAWING NO RESTRICTED TO
	4. BCC ±				A3 00779 C=1827236
	ANGLES ±				
MATERIAL	FINISH	WEIGHT	CUSTOMER DRAWING	SCALE	SHEET
				2:1	3 of 4
					REV R2

THIS DRAWING IS UNPUBLISHED. RELEASED FOR PUBLICATION NOV. 2004. ALL RIGHTS RESERVED. COPYRIGHT 2004 By -

LOC	DIST	REVISIONS			
P	LTR	DESCRIPTION	DATE	DWN	APVD
-	-	SEE SHEET 1	-	-	-



A-A  
SCALE 1:1  
(180DEG. ROTATE)



B-B  
SCALE 1:1

1. THE DIRECTION OF EACH CONNECTOR ON A TRAY IS REFERRED TO THIS DRAWING.
2. GENERAL TOLERANCE : ±0.5

AVAILABLE	20EA/TRAY	1827236-6
AVAILABLE	20EA/TRAY	3-1827236-4
AVAILABLE	20EA/TRAY	2-1827236-4
AVAILABLE	20EA/TRAY	1-1827236-4
AVAILABLE	20EA/TRAY	1827236-4
NOT AVAILABLE	20EA/TRAY	-
TOOLING STATUS	QTY	P/N

THIS DRAWING IS A CONTROLLED DOCUMENT.		DWN	<b>STE</b> TE Connectivity	
DIMENSIONS: MM		CHK		
TOLERANCES UNLESS OTHERWISE SPECIFIED:		APVD	NAME	
0 PLC	±	PRODUCT SPEC	SEMI-HARD TRAY ASSY	
1 PLC	±	APPLICATION SPEC	DDR1 & DDR2 SODIMM SOCKET 200P LOW PROFILE STANDARD TYPE (LATCH DIRECT SOLDERING TYPE)	
2 PLC	±	WEIGHT	SIZE	CAGE CODE
3 PLC	±	CUSTOMER DRAWING	A3	00779
4 PLC	±	SCALE	DRAWING NO	
ANGLES	±	SHEET	C-1827236	
FINISH	±	REV	R2	