

4

3

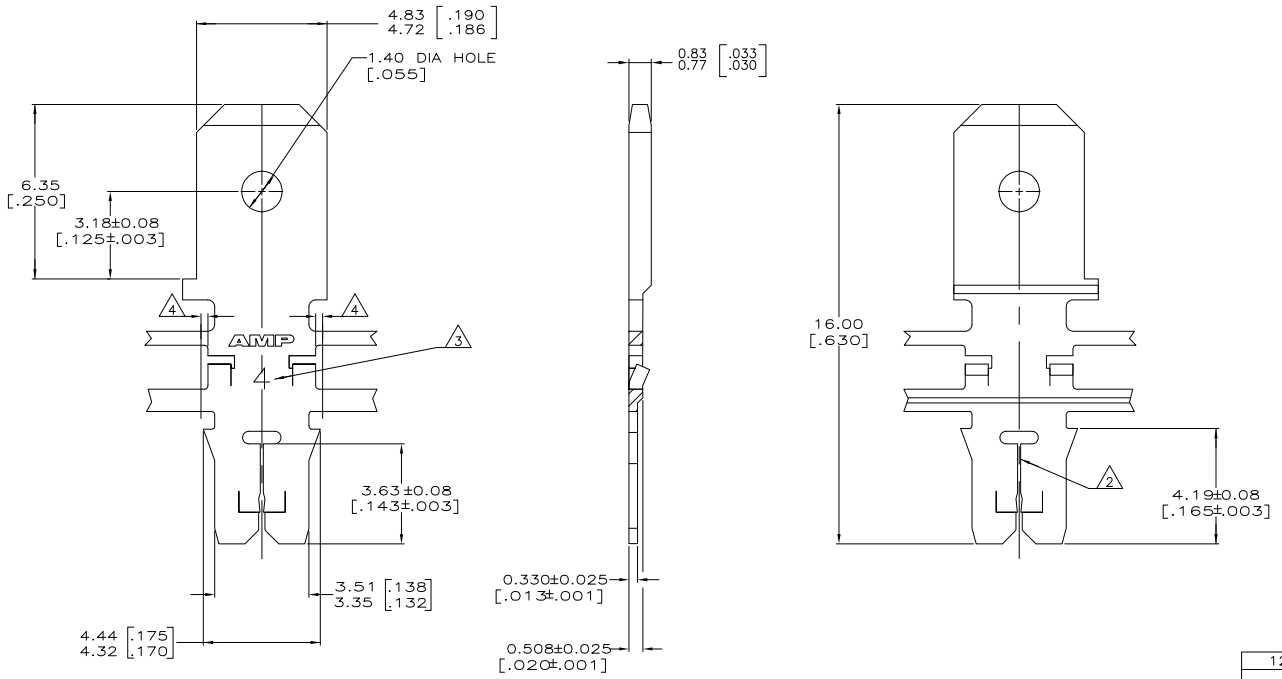
2

1

THIS DRAWING IS UNPUBLISHED. RELEASED FOR PUBLICATION
 BY TYCO ELECTRONICS CORPORATION. ALL RIGHTS RESERVED.

LOC	DIST	REVISIONS			
F	LTR	DESCRIPTION	DATE	BY	APP'D
AF	50	C	REVISED PER ECR-06-010423	13SEP06	HMR KR

- CONTINUOUS STRIP ON REELS WITH TERMINALS LOCATED ON 6.86±0.08 [.270±.003] CENTERS
- SLOT ACCEPTS 0.18-0.23mm [#33-#31] AWG COPPER MAGNET WIRE. TWO WIRES OF THE SAME SIZE MAX PER SLOT
- IDENTIFICATION NUMBER 4 FOR THE MAGNET WIRE SLOT SIZE
- 0.25[.010] MAX CARRIER CUT-OFF TABS



1217666-1
PART NUMBER

THIS DRAWING IS A CONTROLLED DOCUMENT.		DRW: MICHAEL S. FEUER DATE: 06/20/2001	Tyco Electronics Corporation Harrisburg, PA 17105-3608	
DIMENSIONS: mm [INCHES]		CHK: KURT A. RANDOLPH DATE: 06/20/2001	NAME: KURT A. RANDOLPH	
TOLERANCES UNLESS OTHERWISE SPECIFIED:		APPC: 108-1484	TAB, 4.75[.187] FASTON™ MAG-MATE™ Slim Line	
0 PLC ± .010		PRODUCT SPEC: 114-2140	SIZE: A2	CAGE CODE: 00779
1 PLC ± .005		APPLICATION SPEC: 114-2140	DRAWING NO: C=1217666	RESTRICTED TO: -
2 PLC ± .0025		MATERIAL: OR2 PRE-MILLED BRASS	WEIGHT: -	
3 PLC ± .0015		FINISH: 0.002032[.00080] MIN TIN PLATE	CUSTOMER DRAWING	SCALE: 10:1
4 PLC ± .001				SHEET: 1 of 1
ANGLES: ± .5°				REV: C

AMP 1471-9 REV 31MM2000

1217666

A