

4

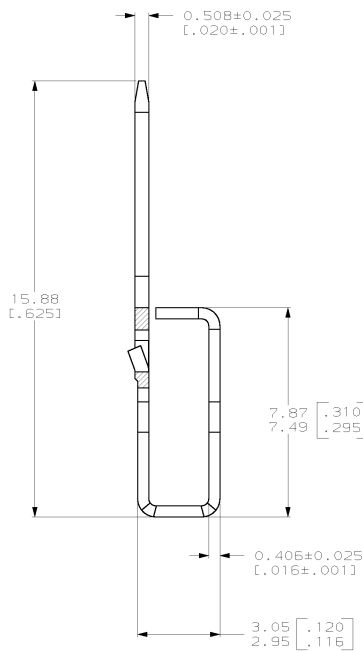
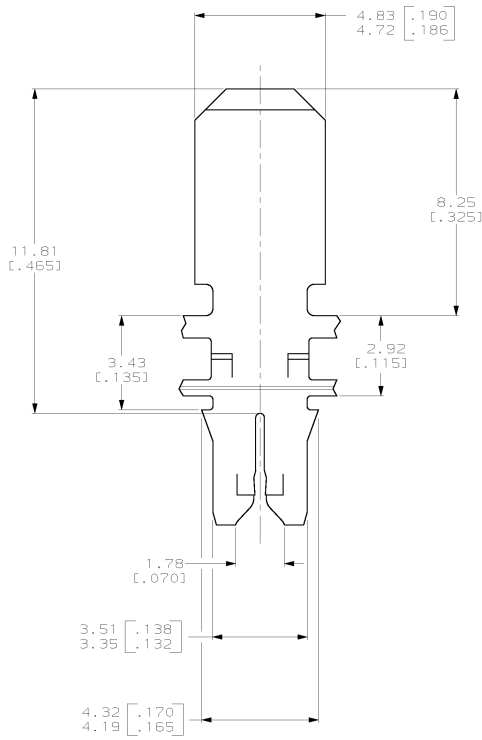
3

2

1

THIS DRAWING IS UNPUBLISHED.  
 RELEASED FOR PUBLICATION  
 BY AMP INCORPORATED. ALL RIGHTS RESERVED.

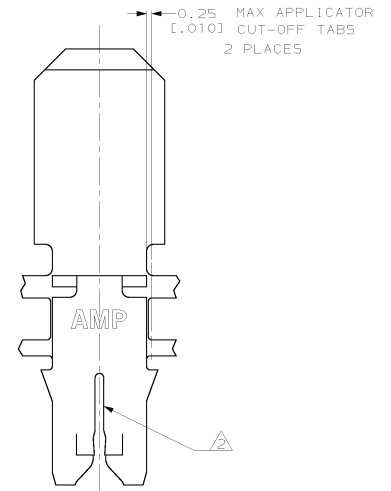
LOC	DIST	REVISIONS			
		DESCRIPTION	DATE	BY	APPD
AF	50				
		D	REVISED PER DG3A-0208-02	17MAY02	MF KR



1 CONTINUOUS STRIP ON REELS WITH TERMINALS LOCATED ON 5.59±0.08 [.220±.003] CENTERS. SLOT TERMINATES EITHER A SINGLE OR DOUBLE MAGNET WIRE OF THE SAME SIZE AND TYPE. COPPER RANGE: 0.36-0.57mm [#27-#23] AWG.

CONTACT LUBE OVER 0.00127 [.000050] MIN NICKEL PLATE.

REVERSE REELED.



1217495-1  
PART NUMBER

THIS DRAWING IS A CONTROLLED DOCUMENT.		DR: MICHAEL S. FEJERS	DATE: 05EP0000	<b>AMP</b> AMP Incorporated Harrisburg, PA 17105-3608
DRAWN BY: KURT A. RANDOLPH		CHK: KURT A. RANDOLPH	DATE: 21EP0000	
DIMENSIONS: mm (INCHES)		APPROVED BY: KURT A. RANDOLPH	DATE: 21EP0000	NAME: TERMINAL, TAB, 4.75 (.187) SERIES, 300 SERIES MAG-MATE™
TOLERANCES UNLESS OTHERWISE SPECIFIED:		PRODUCT SPEC: 108-2012	APPLICATION SPEC: 114-2046	
MATERIAL: 4M PRE-MILLED BRASS		FINISH: -	REWORK: -	STUR: CASE CODE DRAWING NO: A200779
PART NUMBER: 1217495-1		SCALE: 10:1		RESTRICTED TO: -

1217495

A