

4

3

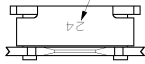
2

1

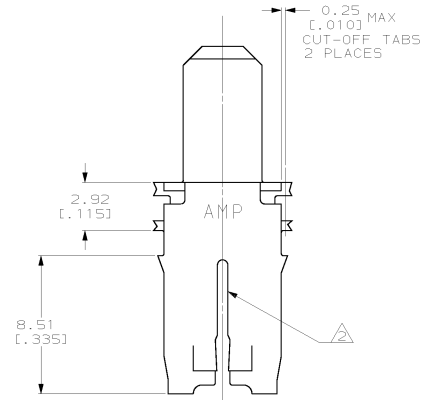
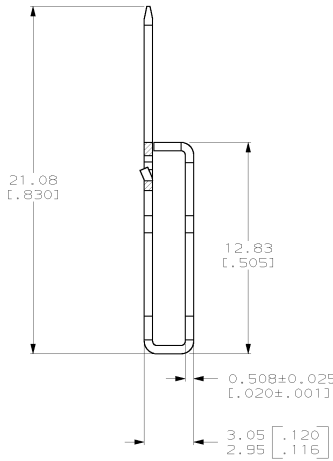
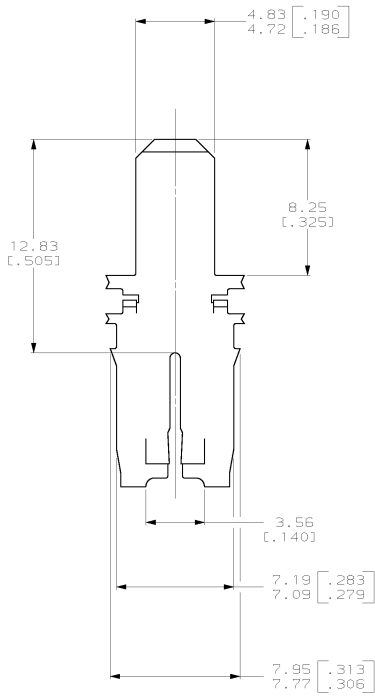
THIS DRAWING IS UNPUBLISHED.  
 RELEASED FOR PUBLICATION  
 BY AMP INCORPORATED. ALL RIGHTS RESERVED.

LOC	DIST	REVISIONS			
		DESCRIPTION	DATE	BY	APPD
AF	50				
		C	REL PER 063A-0212-02	15MAY02	JR KR

IDENTIFICATION NUMBER 24  
 FOR MAGNET WIRE RANGE



- 1 CONTINUOUS STRIP ON REELS WITH TERMINALS LOCATED ON 8.38±0.08 [.330±.003] CENTERS.
- △ SLOT ACCEPTS 0.91-1.15mm [#19-#17] AWG COPPER MAGNET WIRE. 2 WIRES OF THE SAME SIZE MAX PER SLOT.
- △ VARNISH RESIST OVER 0.00127 [.000050] MIN NICKEL PLATE.



1217492-1  
 PART NUMBER

THIS DRAWING IS A CONTROLLED DOCUMENT.		DR: MICHAEL S. FEHNER 01SEP2000	AMP Incorporated Harrisburg, PA 17105-3608	NAME: TERMINAL, TAB, 4.75 [.187] SERIES, 500 SERIES MAG-MATE™	
DIMENSIONS: mm (INCHES)		CHK: KURT A. RANDOLPH 21SEP2000		PRODUCT SPEC: 108-2012	
TOLERANCES UNLESS OTHERWISE SPECIFIED:		APPD: KURT A. RANDOLPH 21SEP2000	APPLICATION SPEC: 114-2066		STUR: CASE CODE (DRAWING NO): A200779
Ø PLC ±.01 Ø PLC ±.02 Ø PLC ±.05 (Ø10) H PLC ±.01 H PLC ±.02 ANGLES ±.5°		MATERIAL: 4M BRASS		REWORK: -	RESTRICTED TO: -
FINISH: -		CUSTOMER DRAWING		SCALE: 6:1	SHEET: 1 OF 1

1217492

A