

4

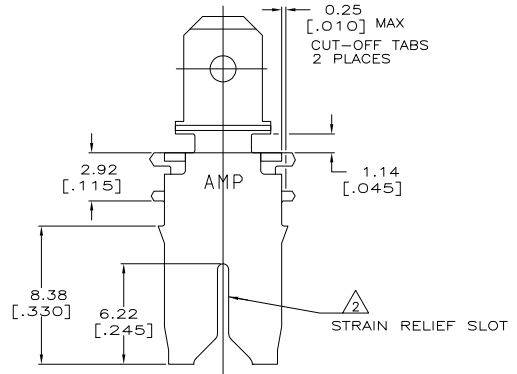
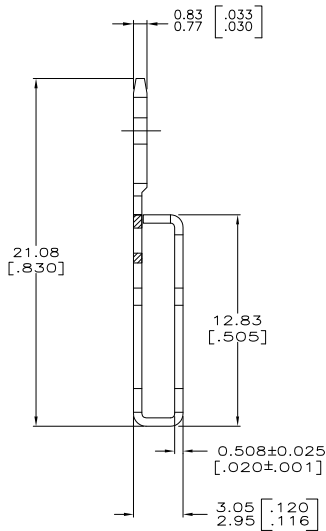
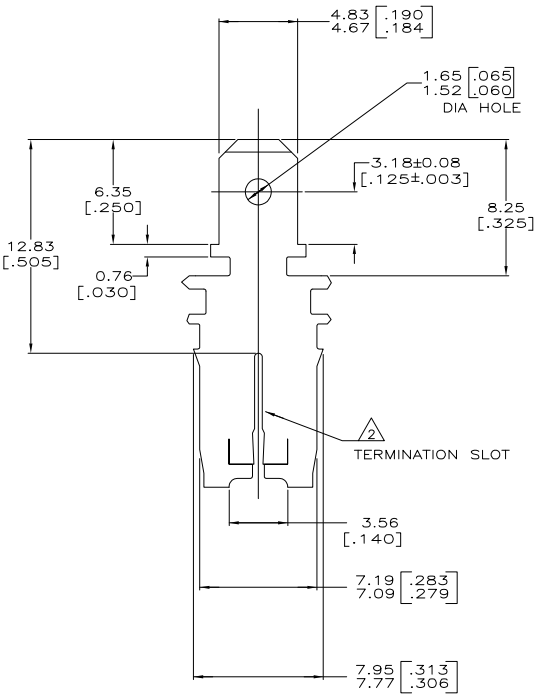
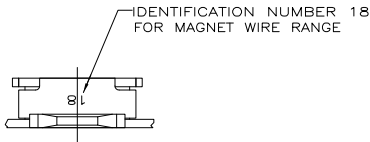
3

2

1

THIS DRAWING IS UNPUBLISHED. RELEASED FOR PUBLICATION
 BY TYCO ELECTRONICS CORPORATION. ALL RIGHTS RESERVED.

LOC	DIST	REVISIONS		
F	LTR	DESCRIPTION	DATE	BY
AF	50	REVISED PER ECR-06-010427	31AUG06	HMR



- CONTINUOUS STRIP ON REELS WITH TERMINALS LOCATED ON 8.38±0.08 [.330±.003] CENTERS. SLOT TERMINATES EITHER A SINGLE OR DOUBLE MAGNET WIRE OF THE SAME SIZE AND TYPE. COPPER RANGE: 0.64-0.81mm [#22-#20] AWG.
- AFTER INSERTION INTO PLASTIC HOLDER, TAB PORTION MUST BE BENT OVER 45° TO 90° OR POTTED-IN TO PREVENT PULL-OUT WHEN MATING RECEPTACLE IS DISCONNECTED.
- VARNISH RESIST OVER 0.002032 [.000080] MIN TIN PLATE
- PRELIMINARY - NOT FOR PRODUCTION

0.002032 [.000080] MIN TIN PL	1217339-2
FINISH	PART NUMBER
1217339-1	

THIS DRAWING IS A CONTROLLED DOCUMENT.		DWG: MICHAEL S. FEYER 23FEB2000		Tyco Electronics Corporation	
DIMENSIONS: mm [INCHES]		CHK: KURT A. RANDOLPH 23FEB2000		Harrisburg, PA 17105-3608	
TOLERANCES UNLESS OTHERWISE SPECIFIED:		APPD: KURT A. RANDOLPH 23FEB2000		NAME: TAB, 4.75[.187] FASTON, 500 SERIES MAG-MATE	
0 PLC ± .010		PRODUCT SPEC: 108-2053		APPLICATION SPEC: 114-2066	
1 PLC ± .0125		MATERIAL: 082 BRASS		SIZE: A2	
2 PLC ± .015		FINISH: SEE TABLE		CASE CODE: C=1217339	
3 PLC ± .025(0.10)		RESTRICTED TO:		DRAWING NO: 1217339	
4 PLC ± .030		CUSTOMER DRAWING		SCALE: 6:1	
ANGLES ± .5°		SHEET: 1 of 1		REV: C	

AMP 1471-9 REV 31MM2000

1217339

A