

4

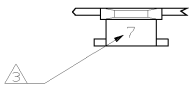
3

2

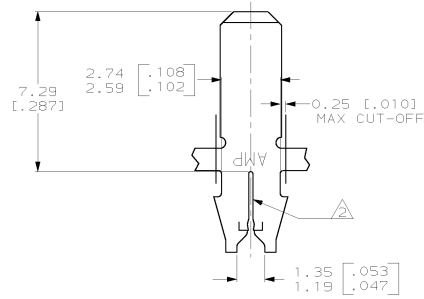
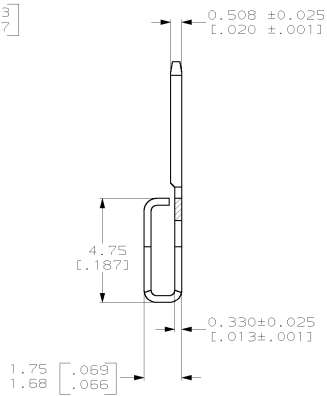
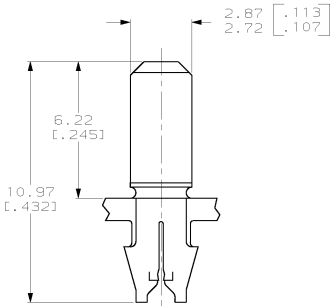
1

THIS DRAWING IS UNPUBLISHED. RELEASED FOR PUBLICATION  
 (C) COPYRIGHT IS BY AMP INCORPORATED. ALL RIGHTS RESERVED.

REV	DATE	BY	APP'D	DESCRIPTION
AF	50			
A				RELEASE TO PRODUCTION 053A-0273-99
	30NOV99	MSF	KAR	



- 1 CONTINUOUS STRIP ON REELS WITH TERMINALS LOCATED ON 5.08±0.08 [.200±.003] CENTERS.
- △ SLOT ACCEPTS 0.29-0.35mm [#29-#27] AWG COPPER MAGNET WIRE 2 WIRES MAX OF THE SAME SIZE PER SLOT.
- △ IDENTIFICATION NUMBER 7 FOR WIRE SLOT SIZE.
- △ 0.00203 [.000080]-0.00381 [.000150] TIN PLATE OVER  
0.00127 [.000050]-0.00254 [.000100] NICKEL UNDERPLATE.



1217196-1  
PART NUMBER

THIS DRAWING IS A CONTROLLED DOCUMENT.		DW MICHAEL S. FEHNER 16A01999 DR FURT A. RANDOLPH 16A01999 APP FURT A. RANDOLPH 16A01999	<b>AMP</b> AMP Incorporated Harrisburg, PA 17105-3608
DIMENSIONS: mm (INCHES)	DIMENSIONS: mm (INCHES)	PRODUCT SPEC: 108-2012 APPLICATION SPEC: 114-2059 WEIGHT: -	TITLE: TAB, 2.79[.110] FASTON™ 187 SERIES MAG-MATE™ CASE CODE: 1217196 DRAWING NO: A200779
MATERIAL: H03 PRE-MILLED BRASS	FINISH: △	CUSTOMER DRAWING	RESTRICTED TO: - SCALE: 8:1 SHEET 1 OF 1 REV A

1217196

1217196-1

PART NUMBER

RESTRICTED TO: -

SCALE: 8:1 SHEET 1 OF 1 REV A