

4

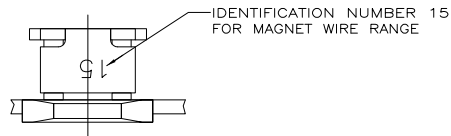
3

2

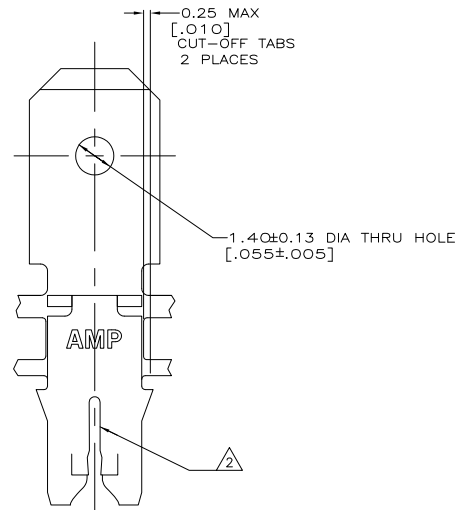
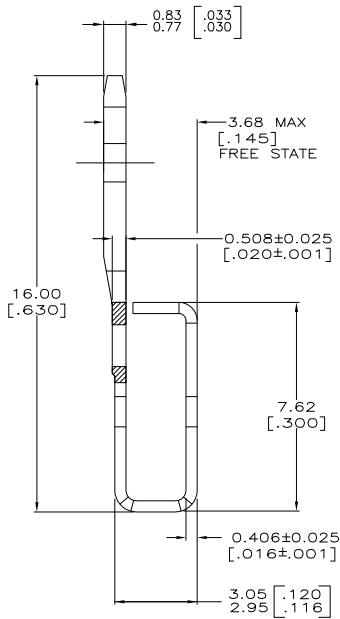
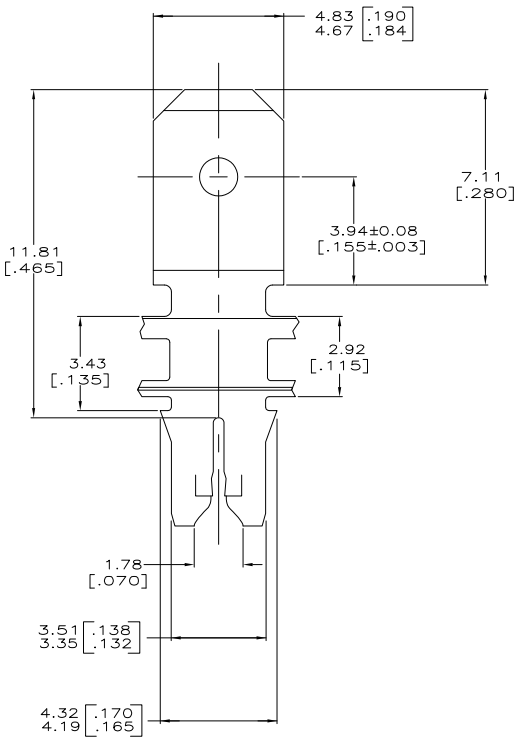
1

THIS DRAWING IS UNPUBLISHED. RELEASED FOR PUBLICATION
 © COPYRIGHT BY TYCO ELECTRONICS CORPORATION. ALL RIGHTS RESERVED.

LOC		DIBT		REVISIONS			
F	LR	DATE	BY	APP'D	DESCRIPTION	DATE	BY
AF	50						
					REVISED PER ECR-06-010412	31OCT06	HMR KR



- 1 CONTINUOUS STRIP ON REELS WITH TERMINALS LOCATED ON 5.59±0.08 [.220±.003] CENTERS.
- 2 SLOT ACCEPTS A SINGLE WIRE MAX OF 0.64-0.81mm [#22-#20] AWG COPPER MAGNET WIRE.
- 3 AFTER INSERTION INTO PLASTIC HOLDER TAB PORTION MUST BE BENT OVER 45° TO 90° OR POTTED-IN TO PREVENT PULL-OUT WHEN MATING RECEPTACLE IS DISCONNECTED.



1217128-1
PART NUMBER

THIS DRAWING IS A CONTROLLED DOCUMENT.		DRW: MICHAEL S. FEYER 23NOV1998	Tyco Electronics Corporation	
DIMENSIONS: mm [INCHES]		CHK: PHILLIP N. FORTIN 23NOV1998	Harrisburg, PA 17105-3608	
TOLERANCES UNLESS OTHERWISE SPECIFIED:		APP: PETE DESANTIS 23NOV1998	TAB, 4.75[.187] FASTON™ 300 SERIES MAG-MATE™	
0 PLG ± -	1 PLG ± -	PRODUCT SPEC: 108-2012	SIZE: A2	CAGE CODE: 00779
2 PLG ± 0.25(010)	3 PLG ± -	APPLICATION SPEC: 114-2046	DRAWING NO: C=1217128	RESTRICTED TO: -
4 PLG ± -	ANGLES ± -	WEIGHT: -	CUSTOMER DRAWING	SCALE: 10:1
MATERIAL: OR2 PRE-MILLED BRASS	FINISH: 0.002032[.000080] MIN TIN	SHEET 1 of 1		REV C

AMP 1471-9 REV 31MM2000

1217128

A