

4

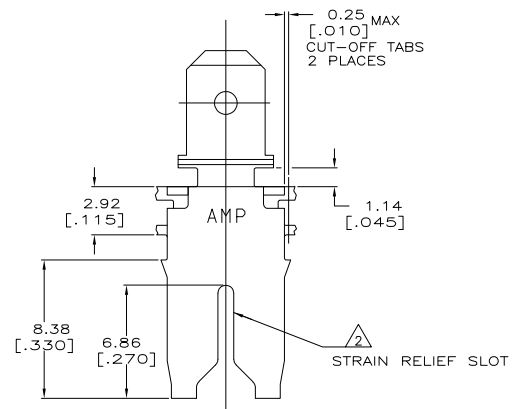
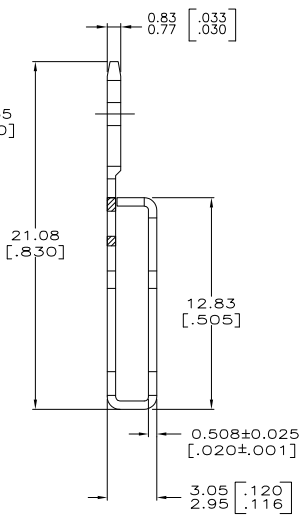
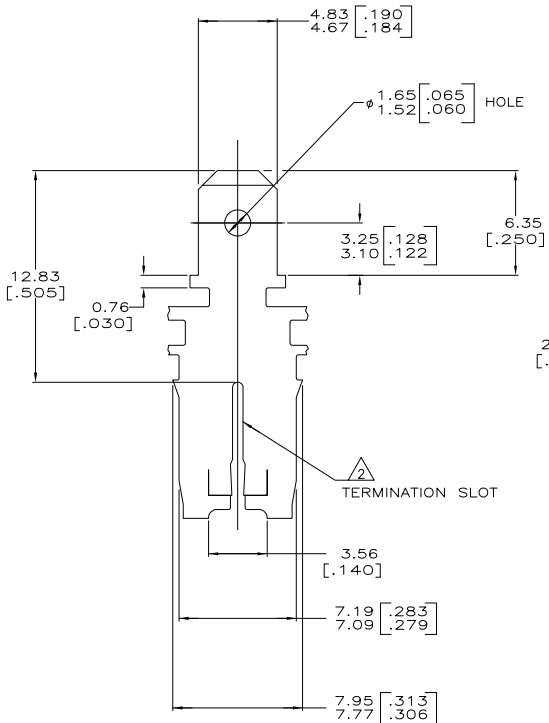
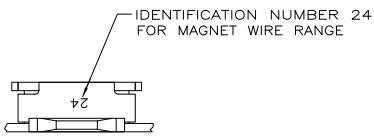
3

2

1

THIS DRAWING IS UNPUBLISHED. RELEASED FOR PUBLICATION
 © COPYRIGHT BY TYCO ELECTRONICS CORPORATION. ALL RIGHTS RESERVED.

LOC		DIBT		REVISIONS			
F	LR	DESCRIPTION	DATE	BY	APP'D		
E		REVISED PER ECR-06-010427	30AUG06	HMR	KR		



- 1 CONTINUOUS STRIP ON REELS WITH TERMINALS LOCATED ON 8.38±0.08 [.330±.003] CENTERS.
- 2 SLOT ACCEPTS 0.91-1.15mm [#19-#17] AWG COPPER MAGNET WIRE RANGE. 2 WIRES OF THE SAME SIZE AND TYPE PER SLOT.
- 3 AFTER INSERTION INTO PLASTIC HOLDER TAB PORTION MUST BE BENT OVER 45° TO 90° OR POTTED-IN TO PREVENT PULL-OUT WHEN MATING RECEPTACLE IS DISCONNECTED.
- 4 VARNISH RESIST OVER 0.002032 [.000080] MIN TIN PLATE
- 5 PRELIMINARY - NOT FOR PRODUCTION

0.002032 [.000080] MIN TIN PL	1217090-2
	1217090-1
FINISH	PART NUMBER

THIS DRAWING IS A CONTROLLED DOCUMENT.		DRN MICHAEL S. FEHLER 27MAY98	Tyco Electronics Corporation	
DIMENSIONS: mm [INCHES]		CHK JEFF R. RUTH 27MAY98	Harrisburg, PA 17105-3608	
TOLERANCES UNLESS OTHERWISE SPECIFIED:		APP NELSON E. NEFF 27MAY98	TAB, 4.75[.187] FASTON, MAG-MATE	
0 PLG ± -		PRODUCT SPEC: 108-2053	APPLICATION SPEC: 114-2066	
1 PLG ± -			WEIGHT -	
2 PLG ± 0.25(0.010)			SIZE CASE CODE DRAWING NO: A2 00779 C=1217090	
3 PLG ± -			RESTRICTED TO	
4 PLG ± -			CUSTOMER DRAWING	
ANGLES ± -			SCALE: 6:1 SHEET 1 of 1 REV E	
MATERIAL: 082 BRASS	FINISH: SEE TABLE			

AMP 1471-9 REV 31MM2000

1217090

A