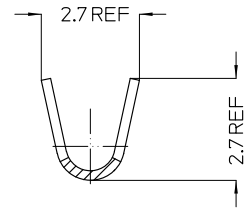
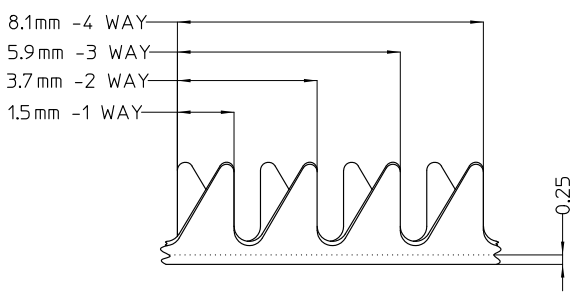


THIS DRAWING IS UNPUBLISHED. RELEASED FOR PUBLICATION
 © COPYRIGHT BY TYCO ELECTRONICS CORPORATION. ALL RIGHTS RESERVED.

LOC		DIST		REVISIONS			
P	LTR	DESCRIPTION		DATE	DWN	APVD	
-	-			-	-	-	

CUT TO LENGTH AS REQUIRED



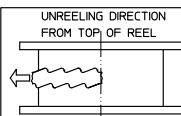
CONTINUOUS STRIP

NOTES

- 1. WIRE RANGE
 CONDUCTOR: 0.5mm² - 1.0mm²

BRASS 70/30	TERMINAL, SHOE LACE H29100	1-1627139-0
MATERIAL DESC.	DESCRIPTION	PART No.

THIS INFORMATION IS CONFIDENTIAL AND PROPRIETARY TO TYCO ELECTRONICS CORPORATION AND IS NOT TO BE RELEASED TO ANYONE OTHER THAN TYCO ELECTRONICS CORPORATION, HARRISBURG, PENNSYLVANIA, USA.



THIS DRAWING IS A CONTROLLED DOCUMENT.		DWN: W,RIEDE 28,4,05
ALL DIMENSIONS IN mm		CHK: H,THAI 28,4,05
TOLERANCES UNLESS OTHERWISE SPECIFIED:		APVD: W,RIEDE 28,4,05
DIMENSION (mm)	TOLERANCE(+/-mm)	PRODUCT SPEC:
LESS THAN 10	0.4	-
OVER 10 TO 30	0.5	APPLICATION SPEC:
OVER 30 TO 80	0.7	-
OVER 80 TO 250	1.0	WEIGHT:
ANGLES	42°	-
MATERIAL	FINISH	
-	-	

Tyco Electronics Corporation AUSTRALIA		NAME:	TERMINAL, SHOE LACE	
SIZE	CAGE CODE	DRAWING NO	RESTRICTED TO	
A3		1627139	-	
CUSTOMER DRAWING		SCALE	SHEET	OF
		10:1	1	1
				REV
				0