

4

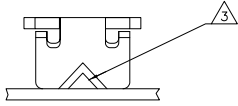
3

2

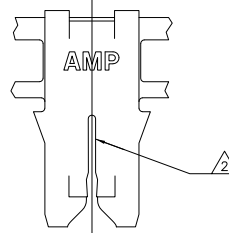
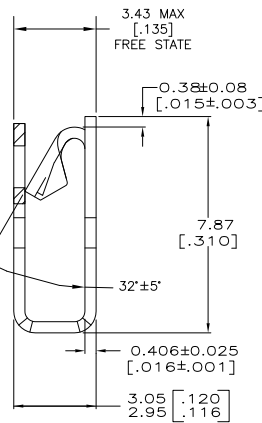
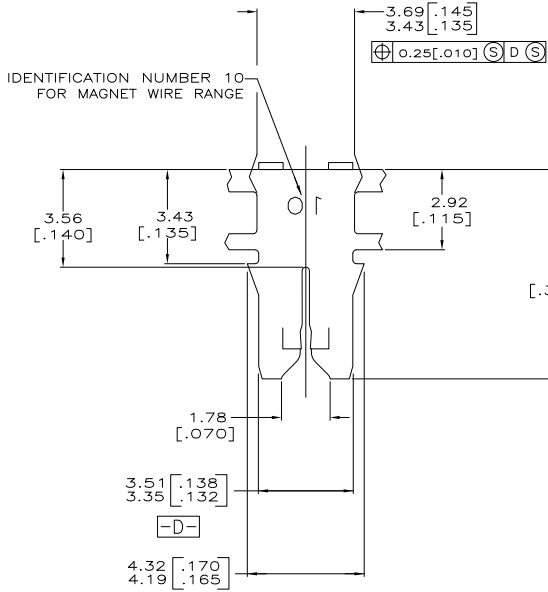
1

THIS DRAWING IS UNPUBLISHED. RELEASED FOR PUBLICATION  
 © COPYRIGHT BY TYCO ELECTRONICS CORPORATION. ALL INTERNATIONAL RIGHTS RESERVED.

LOC	DIST	REVISIONS		
P	LTR	DESCRIPTION	DATE	BY
AF	50			
		AH4	REVISED PER ECR-10-021565	22OCT10 HMR KR



- 1 CONTINUOUS STRIP ON REELS WITH TERMINALS LOCATED ON 5.59±0.08 [.220±.003] CENTERS.
- 2 SLOT ACCEPTS EITHER A SINGLE OR DOUBLE MAGNET WIRE OF THE SAME SIZE AND TYPE. COPPER RANGE 0.36-0.57mm [#27-#23 AWG].
- 3 POKE-IN ACCEPTS A 0.50-0.90mm [#20-#18] AWG SOLID OR FUSED STRANDED LEAD WIRE.
- 4 SPECIAL REEL QUANTITY - AMP SPAIN PRODUCTION ONLY.
- 5 PRELIMINARY - NOT FOR PRODUCTION.
- 6 FOREIGN PRODUCTION ONLY.
- 7 PREPRODUCTION - FASR REQUIRED.



STANDARD	PAPER SPLICE	WITHOUT PAPER	0.002032[.000080] MIN TIN PLATE	R620S CU-NI-SI	7	62935-9
STANDARD	PAPER SPLICE	WITHOUT PAPER	0.002032[.000080] MIN TIN PLATE	4M BRASS	5	62935-8
STANDARD	SPLICE FREE	WITH PAPER	0.002032[.000080] MIN TIN PLATE	4M BRASS	6	62935-7
REVERSE	WELD SPLICE	WITHOUT PAPER	0.002032[.000080] MIN TIN PLATE	4M BRASS	5	62935-6
STANDARD	WELD SPLICE	WITHOUT PAPER	0.002032[.000080] MIN TIN PLATE	4M BRASS	4	62935-5
STANDARD	SPLICE FREE	PLASTIC REEL W/O PAPER	0.002032[.000080] MIN TIN PLATE	4M BRASS		62935-4
STANDARD	WELD SPLICE	WITH PAPER	0.002032[.000080] MIN TIN PLATE	4M BRASS		62935-3
STANDARD	WELD SPLICE	PLASTIC REEL W/ PAPER	NONE	4M BRASS	6	62935-2
STANDARD	WELD SPLICE	WITHOUT PAPER	0.002032[.000080] MIN TIN PLATE	4M BRASS		62935-1
REELING DIRECTION	SPLICE	REELING	FINISH	MATERIAL	PART NUMBER	

THIS DRAWING IS A CONTROLLED DOCUMENT.

DESIGNED BY: MICHAEL S. FEYER (15MAR2004)  
 CHECKED BY: KURT A. RANDOLPH (15MAR2004)  
 APPROVED BY: KURT A. RANDOLPH (15MAR2004)

TYCO ELECTRONICS Corporation  
 Harrisburg, PA 17105-3608

PRODUCT SPEC: 108-2012  
 APPLICATION SPEC: 114-2046  
 WEIGHT: -

SIZE: A2  
 CASE CODE: 00779  
 DRAWING NO: C-62935

CUSTOMER DRAWING  
 SCALE: 10:1  
 SHEET: 1 of 1  
 REV: AH4

62935

A