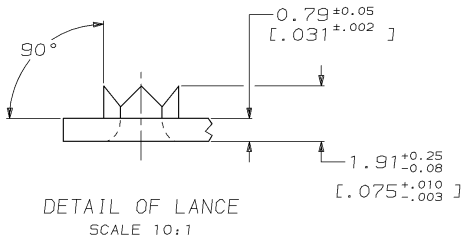
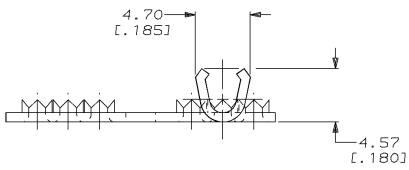
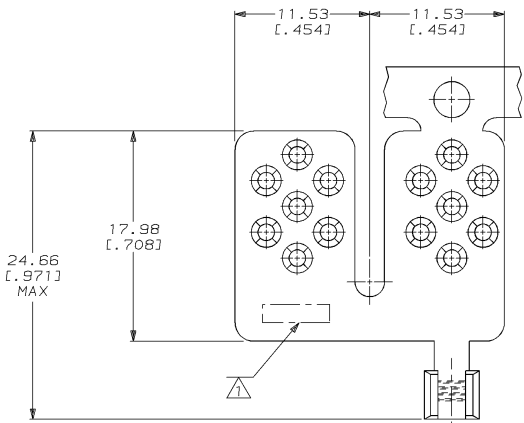


DRAWING MADE IN THIRD ANGLE PROJECTION  
 THIS DRAWING IS UNPUBLISHED. RELEASED FOR PUBLICATION 19  
 © COPYRIGHT 19 BY AMP INCORPORATED. ALL INTERNATIONAL RIGHTS RESERVED.

LOC		DIST		ZONE		LTR		REVISIONS		DATE	APPD
6	86	P	F					0	RELEASED PER 0720-0052-94	6/16/94	86 AJK

**METRIC**  
 DIMENSIONS LISTED IN mm [ INCHES ]

△ STAMP AMP APPROX AS SHOWN



DETAIL OF LANCE  
 SCALE 10:1

<b>AMP INCORPORATED</b> <b>CUSTOMER SERVICE SYSTEMS</b>		MAX RECOMMENDED OPERATING TEMPERATURE: 170°C MAX	DO NOT SCALE PRINT. UNLESS SPECIFIED DIMENSIONS IN mm [INCHES] TOLERANCES ON: 2 PLC DEC ± - 3 PLC DEC ± - ANGLES ± -	DR 6/16/94 DK SCHRUM CHK 6/20/94 AJ KAUFMAN APPD 6/20/94 RE ROSER APPD 6/20/94 JL MECKLEY	<b>AMP</b> AMP Incorporated Harrisburg, PA 17105-3608	
FOR ADDITIONAL PRODUCT INFORMATION OR COPIES OF DRAWINGS AND TECHNICAL DOCUMENTS PRODUCT INFORMATION CENTER 1-800-522-6752	VOLTAGE RATING: NOT APPLICABLE	WIRE CROSS SECTIONAL AREA RANGE: 1.04-2.62mm² [2,050-5,180] CIR MILS SOLID OR STRANDED	MATERIAL COPPER PER ASTM B-152	FINISH TIN PLATE 0.00254 [0.000100] MIN THK PER MIL-T-10727	NAME <b>TERMINAL, W/ OPEN BARREL, TAP, TERMI-FOIL™, WIRE SIZE: 16-14 AWG</b>	
FOR APPLICATION TOOLING INFORMATION TOOLING ASSISTANCE CENTER 1-800-722-1111	THIS DRAWING IS A CONTROLLED DOCUMENT FOR AMP INCORPORATED. IT IS SUBJECT TO CHANGE AND THE CONTROLLING ENGINEERING ORGANIZATION SHOULD BE CONTACTED FOR THE LATEST REVISION.	APPLICATION SPEC -	PRODUCT SPEC -	SIZE C 00779	CAGE CODE C-53645	DRAWING NO C-53645
FOR ORDER ENTRY 1-800-526-5142	AMP 1471-6 REV 3-92	WEIGHT -	SCALE 4:1	SHEET 1 OF 1	PART NO 53645-2	

CUSTOMER DRAWING