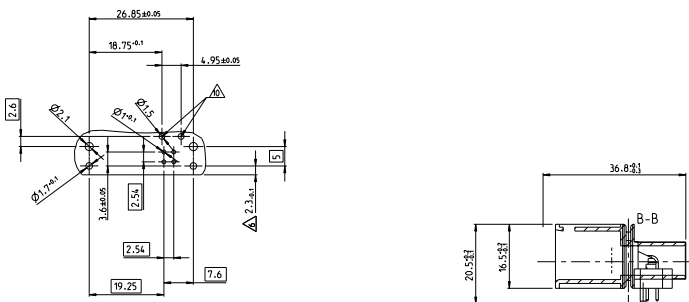


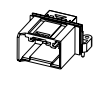
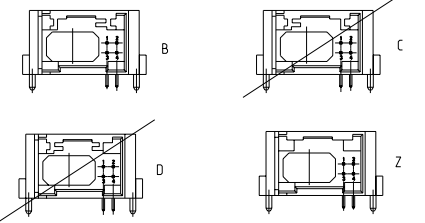
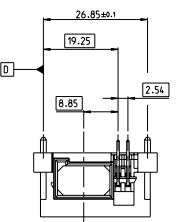
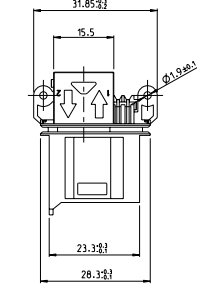
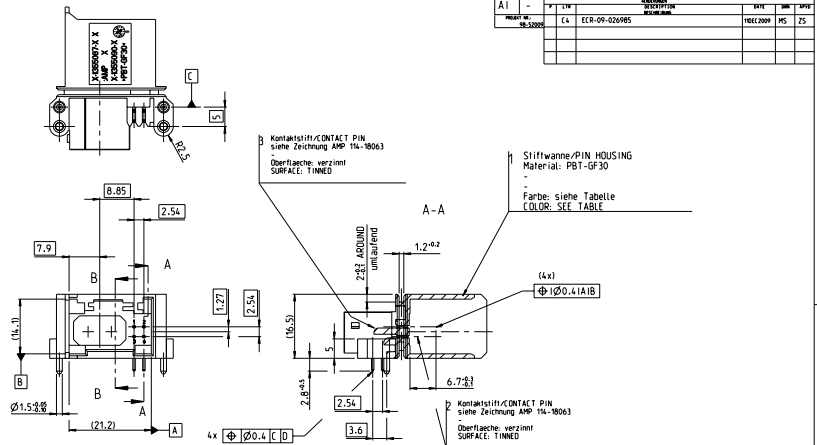
DATE OF PUBLICATION		REVISIONS	REVISED BY	DATE	DESCRIPTION
		1

REVISED BY		DATE	DESCRIPTION
...

**PRINTED CIRCUIT BOARD
LOADING SIDE**
Leiterplatte
von Bestückungsseite



- NOTES
Bemerkungen
- 1. Conformant gemäß DIN IEC 68 Teil 2-20, Abstrich 3
Solderability ACCORDING DIN IEC 68 PART 2-20 SLUG 3
 - 2. Kontaktausgangskraft: 25mN mit Vorschub 25mm/min für 0.43 mm PINS
PRESS OUT FORCE: 25mN with 25 mm/min for 0.43 mm PINS
 - 3. Verpackung in Produktträger, Non-returnable
PACKING: IN TRAY, NON-RETURNABLE
 - 4. Kodierung A wie gezeichnet
CODING: AS SHOWN
 - 5. Masse 2.3 -0.1 erforderlich bei Nutzung der umlaufenden Nut
DIMENSION 2.3 -0.1 FUNCTION WITH ACCORDING GROOVE
 - 7. Einzelheiten der Ausführung bleiben dem Hersteller überlassen
DETAILS OF DESIGN ARE LEFT TO MANUFACTURER
 - 8. Maßgebend ist nur der deutsche Text
ONLY THE GERMAN LANGUAGE SHALL BE BINDING
 - 9. Zulässiger Regenerationsanteil max. 25%
RECYCLED MATERIAL MAX. 25% PERMISSIBLE
 - 10. Massehaltungsstelle fuer Schirmblech
MASS BASES FOR SHIELD
 - 11. Hierzu gehören 2 pos. Pig Tail nach TE Spezifikation 108-94228
SUITABLE FOR 2 POS. PIG TAIL ACCORDING TO TE SPECIFICATION 108-94228
- Verpackung: **P** in Produktträger, Einweg
PACKING: **P** IN TRAY, NON-RETURNABLE



TE BEST.-NR. ORDER NO.	REV.	POS.	SI-BOX	BEZUGS- FLÄCHE	DESCRIPTION	PROZESS- FÄHIGKEIT	ANMERKUN- GEN	GEWICHT WEIGHT	MADE FROM
1-1355090-3	A	-	-	-	-	-	-	-	1-1355090-2
9-1355090-2	C	Z	2	Kontaktstift/CONTACT PIN	verzinkt/TIN	K	6.5	9-1355090-1 1-1355090-1 1-1355090-1 1-1355090-1	
4-1355090-2	-	D	2	Stiftwanne-A-2-polig/PIN HOUSING	schwarz/SWARZ			4-1355090-1 9-1355090-1	
3-1355090-2	-	C	2	Kontaktstift/CONTACT PIN	verzinkt/TIN			3-1355090-1 9-1355090-1	
2-1355090-2	C	B	2	Kontaktstift/CONTACT PIN	verzinkt/TIN			2-1355090-1 9-1355090-1	
1-1355090-2	C	A	2	Kontaktstift/CONTACT PIN	verzinkt/TIN			1-1355090-1 9-1355090-1	
9-1355090-1	A	Z	2	Kontaktstift/CONTACT PIN	verzinkt/TIN	K	6.5	9-1355090-1 1-1355090-1 2-1355090-1 4-1355090-1	
4-1355090-1	-	D	2	Stiftwanne-A-2-polig/PIN HOUSING	violett/VIOLETT			4-1355090-1 9-1355090-1	
3-1355090-1	-	C	2	Kontaktstift/CONTACT PIN	verzinkt/TIN			3-1355090-1 9-1355090-1	
2-1355090-1	A	B	2	Kontaktstift/CONTACT PIN	verzinkt/TIN			2-1355090-1 9-1355090-1	
1-1355090-1	A	A	2	Kontaktstift/CONTACT PIN	verzinkt/TIN			1-1355090-1 9-1355090-1	

TE Best.-Nr.: 007799 (CS)=1355090			Kundenzzeichnung: 108-94228-2.1		
Rev. A			Rev. 1		
Date: 04.12.2013			Date: 11.12.2013		