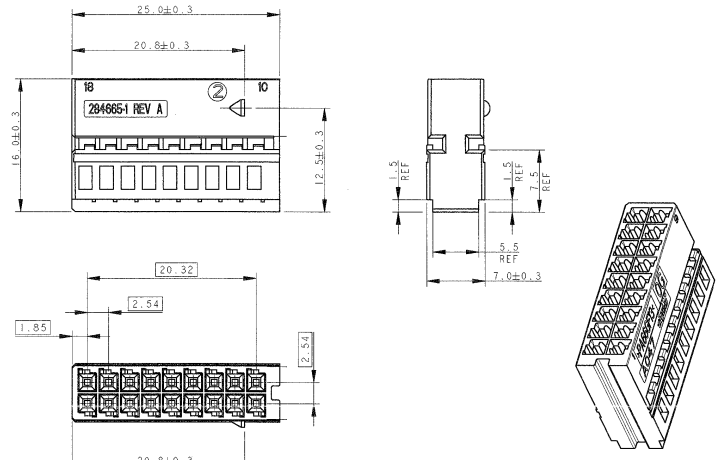
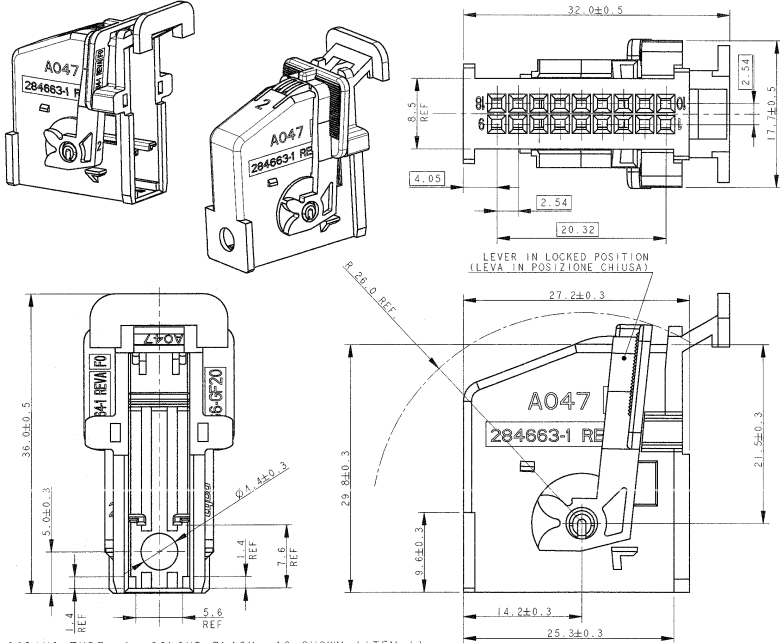
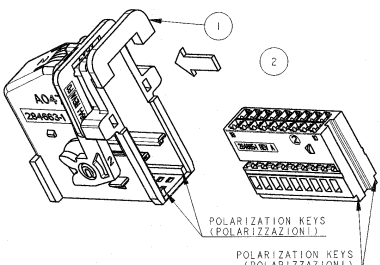


REVISONS		DATE	BY	APPD
0	FIRST ISSUE	05JUL2000	M. P.	R. M.
1	UPDATED	13JUL2000	M. P.	R. M.
A	UPDATED DRAWING PER ET00-0241-00	28SEP2000	F. C.	O. C.
AI	RELEASED FOR PRODUCTION PER ET00-0100-02	03NOV02	F. C.	O. C.



CODING TYPE -A- COLOUR BLACK, AS SHOWN (ITEM 1)
 (POLARIZZAZIONE -A- COLORE NERO, COME INDICATO -COMPONENTE 1-)

CODING TYPE -A- COLOUR BLACK, AS SHOWN (ITEM 2).
 (POLARIZZAZIONE -A- COLORE NERO, COME INDICATO -COMPONENTE 2-)



- 1) CAVITIES (ITEM 2) SUITABLE FOR MICRO QUADLOK SYSTEM RECEPTACLE CONTACT P/N 928999-... AND 963715-...
- 2) FOR POLARIZATION KEYS DIMENSIONS SEE SHEET 2 OF 3
- 3) FOR COUNTERPART DIMENSIONS SEE SHEET 3 OF 3
- 4) RELEVANT TO REC. CONTACT ONLY.
- 5) LEVER COLOUR: BLACK.
- 6) THE PRODUCT IS SUPPLIED WITH LEVER IN CLOSED POSITION.
- 7) No 1 COVER WITH LEVER + No 1 PLUG HOUSING ARE SUPPLIED IN KIT ACCORDING TO TABLE WITH EQUIVALENT NUMBER OF PIECES FOR EACH COMPONENT IN A BOX.

ITEM	DESCRIPTION	COLOR	CODE	REMARKS
1	BLUE (BLU)	BLUE (BLU)	D	SEE NOTE 3) (VEDERE NOTA)
1	BROWN (MARRONE)	BROWN (MARRONE)	C	SEE NOTE 3) (VEDERE NOTA)
1	WHITE (BIANCO)	WHITE (BIANCO)	B	SEE NOTE 3) (VEDERE NOTA)
1	BLACK (NERO)	BLACK (NERO)	A	SEE NOTE 3) (VEDERE NOTA)
-1	-2	-3	-4	COVER+LEVER -ITEM 1- (CORAZZA+LEVA -COMPONENTE 1-)
-1	-2	-3	-4	PLUG HOUSING -ITEM 2- (BLOCCETTO -COMPONENTE 2-) (POLARIZZ.)

NOTES (NOTE)

- 1) LE CAVITA' (COMPONENTE 2) SONO ADATTE PER CONTATTO FEMMINA MICRO QUADLOK SYSTEM P/N 928999-... E 963715-...
- 2) PER LE DIMENSIONI DELLE POLARIZZAZIONI VEDERE FOGLIO 2/3.
- 3) PER LE DIMENSIONI DELLA CONTROPARTE VEDERE FOGLIO 3/3.
- 4) RELATIVA SOLO AL CONTATTO FEMMINA.
- 5) LEVA IN COLORE NERO.
- 6) IL PRODOTTO VIENE FORNITO CON LEVA IN POSIZIONE CHIUSA.
- 7) No 1 CORAZZA CON LEVA + No 1 BLOCCETTO SONO FORNITI IN KIT SECONDO TABELLA CON FARI NUMERO DI PEZZI PER SCATOLA.

DIMENSIONS: mm TOLERANCES UNLESS OTHERWISE SPECIFIED: 0 P/C ±0.3 1 P/C ±0.3 2 P/C ±0.3 3 P/C ±0.3 4 P/C ±0.3 FINISH: #2		DATE: 05JUL2000 BY: M. PALMA CHK: 05JUL2000 BY: S. MARTIN DATE: 05JUL2000 BY: A. GENTA	AMP Italia S.p.A. C.so F.lli Cervi 15 Colleago (TO)
MATERIAL: PA 66 GF FILLED		PRODUCT SPEC: 108-18030 APPLICATION SPEC: 114-18021	SIZE: A2 CASE CODE: 00779 DRAWING NO: 284666
CUSTOMER DRAWING		SCALE: 3:1 SHEET 1 OF 3 REV A1	

4

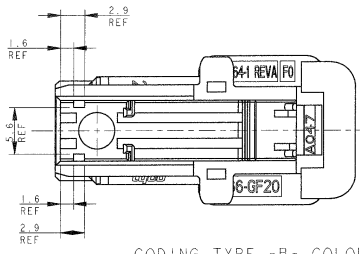
3

2

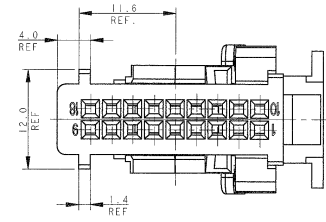
1

THIS DRAWING IS UNPUBLISHED. RELEASED FOR PRODUCTION. 174
 COPYRIGHT © BY AMP INCORPORATED. ALL RIGHTS RESERVED.

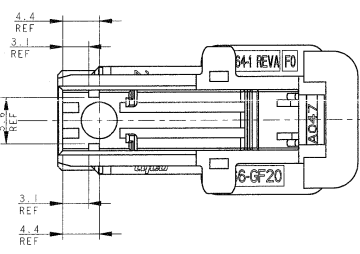
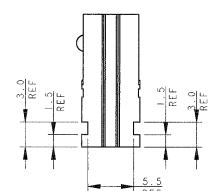
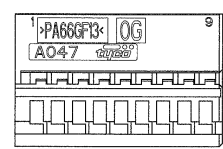
REVISIONS						
LOC	DIST	REV	DESCRIPTION	DATE	BY	APPD
1	-	-	SEE SHEET 1	-	-	-



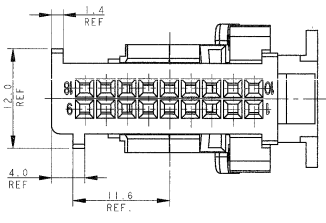
CODING TYPE -B- COLOUR WHITE, (ITEM 1)
 (POLARIZZAZIONE -B- COLORE BIANCO, -COMPONENTE 1-)



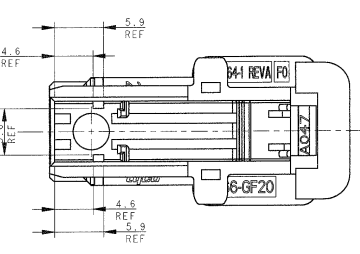
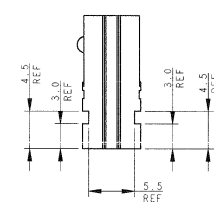
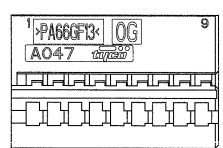
CODING TYPE -B- COLOUR WHITE, (ITEM 2)
 (POLARIZZAZIONE -B- COLORE BIANCO, -COMPONENTE 2-)



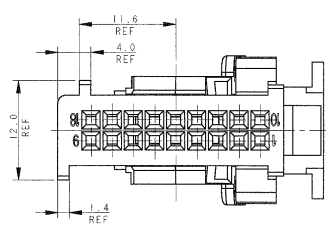
CODING TYPE -C- COLOUR BROWN, (ITEM 1)
 (POLARIZZAZIONE -C- COLORE MARRONE, -COMPONENTE 1-)



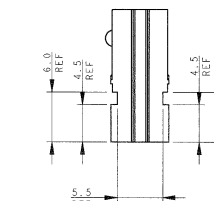
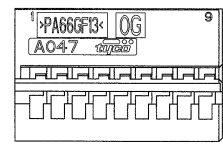
CODING TYPE -C- COLOUR BROWN, (ITEM 2)
 (POLARIZZAZIONE -C- COLORE MARRONE, -COMPONENTE 2-)



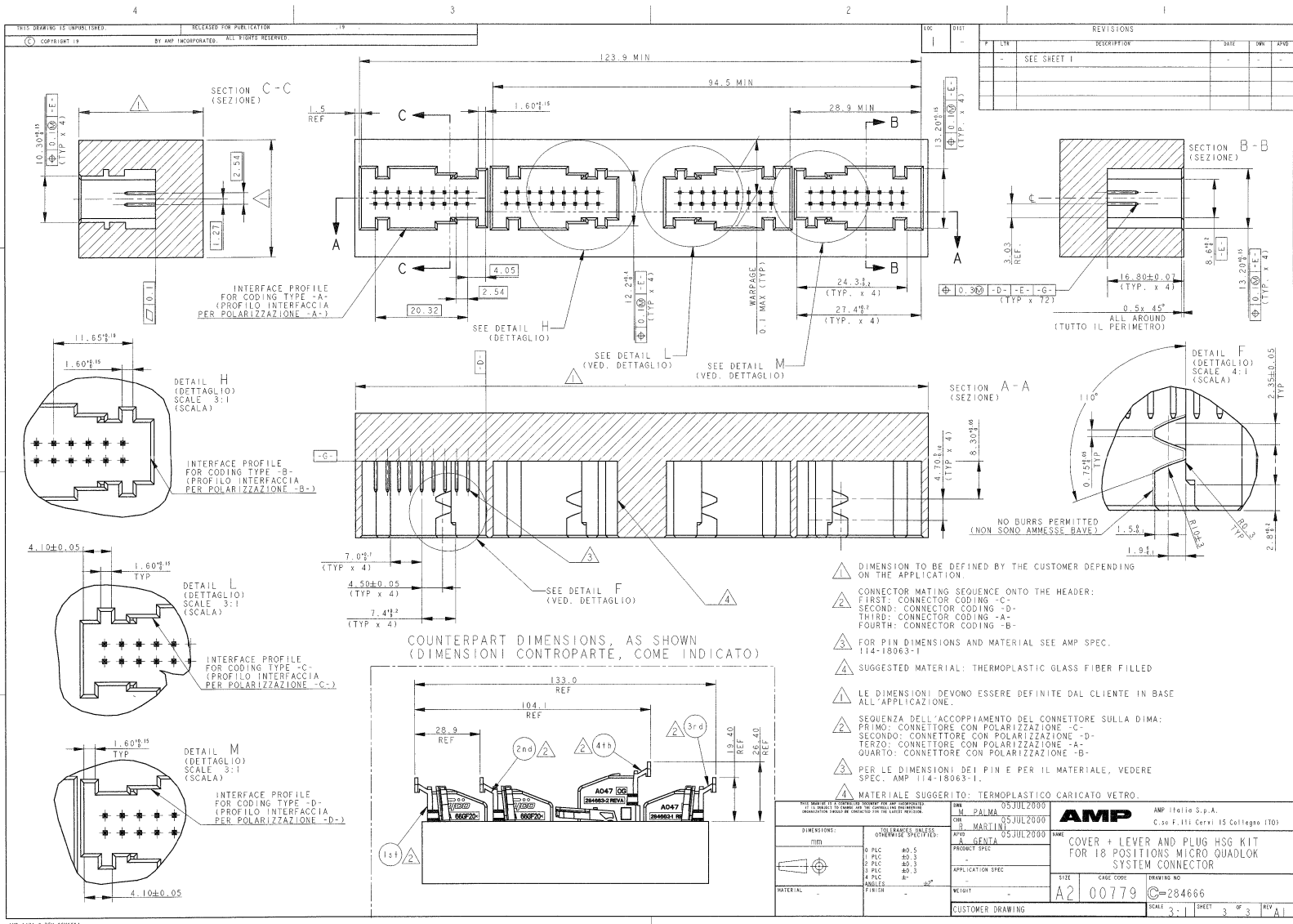
CODING TYPE -D- COLOUR BLUE, (ITEM 1)
 (POLARIZZAZIONE -D- COLORE BLU, -COMPONENTE 1-)



CODING TYPE -D- COLOUR BLUE, (ITEM 2)
 (POLARIZZAZIONE -D- COLORE BLU, -COMPONENTE 2-)



THIS DRAWING IS UNPUBLISHED. RELEASED FOR PRODUCTION. 174 ALL RIGHTS RESERVED.		DWG: PALMA 05JUL2000 CHK: PALMA 05JUL2000 APD: MARTINI 05JUL2000 PRODUCED BY: GENIA 05JUL2000	AMP AMP Italia S.p.A. C.so F.lli Cervi 15 Colleugo (TO)
D. DRAWING: 072000013 (REV.15) (REV.15)	0 P.L.C. 40.5 1 P.L.C. 40.3 2 P.L.C. 40.3 3 P.L.C. 40.3 4 P.L.C. 40.3 ANGLE: 90°	APPLICATION SPEC: REF:	NAME: COVER + LEVER AND PLUG HSG KIT FOR 18 POSITIONS MICRO QUADLOK SYSTEM CONNECTOR DATE: 00779 DRAWING NO: 284666
MATERIAL:	REF:	CUSTOMER DRAWING	SCALE: 3:1 SHEET 2 OF 3 REV. A1



REV.	DATE	BY	APPV.	DESCRIPTION
1				SEE SHEET 1

DIMENSIONS: mm		SOLARACES UNLESS OTHERWISE SPECIFIED:		DATE: 05JUL2000 BY: M. PALMA CHK: A. MARTINI APPV: A. GENTA	AMP AMP Italia S.p.A. C.so F.lli Cervi 15 Colligato (TO)
0 PIC	#0.5	0	#0.5	PRODUCT SPEC	COVER + LEVER AND PLUG HSG KIT FOR 18 POSITIONS MICRO QUADLOK SYSTEM CONNECTOR
1 PIC	#0.5	1	#0.5	APPLICATION SPEC	
2 PIC	#0.3	2	#0.3	WEIGHT	
4 PIC	#0.3	4	#0.3	CUSTOMER DRAWING	
MATERIAL:		FINISH:		SIZE: A2	CAGE CODE: 00779
				DRAWING NO: ©284666	SCALE: 3:1
				SHEET: 3	REV: A1