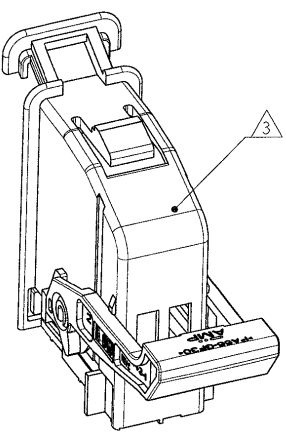
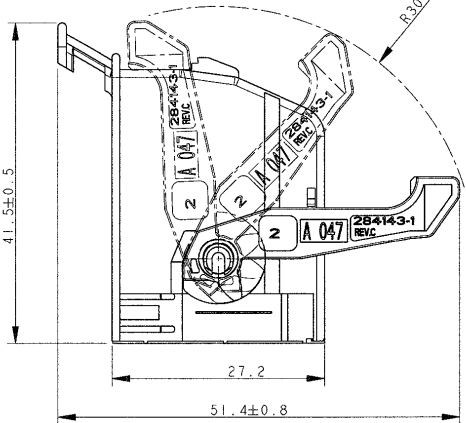
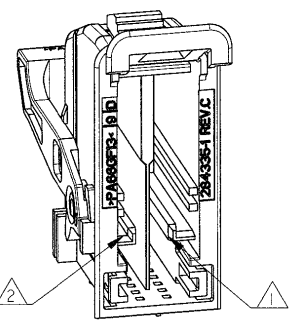
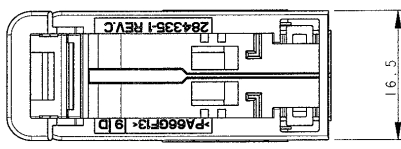
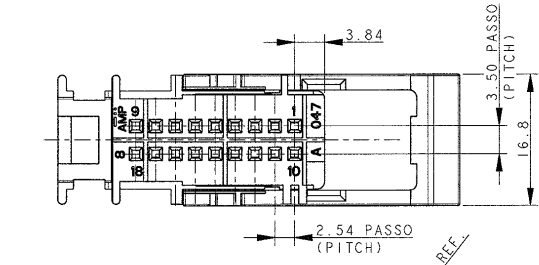


THIS DRAWING IS UNPUBLISHED
 QUESTO DISEGNO NON DEVE ESSERE DIVULGATO O RIPRODOTTO
 RELEASED FOR PUBLICATION
 E' CONSENTITA LA DIVULGAZIONE
 BY AMP INCORPORATED. ALL RIGHTS RESERVED.
 TUTTI I DIRITTI SONO RISERVATI

| LOC | DIST | REVISIONS | | | |
|-----|------|--|-----------|------|--------------------|
| P | LTR | DESCRIPTION | DATE | DWR | APVD |
| REV | | DESCRIZIONE | DATA | DIS. | APP. |
| A | | (FIRST ISSUE) PRIMA EMISSIONE ET00-0364-99 | 17NOV99 | G.S. | A.G. |
| A1 | | UPDATED DRAWING (ET00-0126-00) | 09MAY00 | M.S. | O.C. |
| B | | RELEASED FOR PRODUCTION ET00-0164-00 | ...JUN-00 | M.S. | <i>[Signature]</i> |



NOTE:
 (NOTES:)
 MATERIALI: (MATERIALS)
 1) SEDE ADATTE PER MODULO CRIMP 2.54 mm PITCH
 P/N 284134 -1 E -2 VEDI TAB. FOGLIO 2/2
 (SLOT SUITABLE FOR HOUSING CRIMP 2.54 mm PITCH
 P/N 284134-1 END -2 SEE TAB SHEET 2/2)
 2) SEDE ADATTA PER MODULO CRIMP 2.54 mm PITCH
 P/N 284134-3 E -4 VEDI TAB. FOGLIO 2/2
 (SLOT SUITABLE FOR HOUSING CRIMP 2.54 mm PITCH
 P/N 284134-3 END -4 SEE TAB. SHEET 2/2)
 MATERIALI: (MATERIALS)
 3) CORAZZA: PA6.6 CARICATO VETRO VEDI TAB. FOGLIO 2/2
 PER COLORE:
 (SHELL: PA 6.6 GLASS FILLED SEE TAB. SHEET 2/2 FOR COLOUR)
 4) LEVA: PA 6.6 CARICATO VETRO COLORE ROSSO
 (LEVER: PA 6.6 GLASS FILLED RED COLOUR)
 4) IL PRODOTTO VIENE FORNITO CON LEVA IN POSIZIONE CHIUSA.
 (THE FRAME IS SUPPLIED WITH LEVER IN CLOSED POSITION)

284360-1 COME MOSTRATO (AS SHOWN)

| | | | |
|--|---|--|--|
| THIS DRAWING IS A CONTROLLED DOCUMENT FOR AMP INCORPORATED. IT IS SUBJECT TO CHANGE AND THE CONTROLLING ENGINEERING ORGANIZATION SHOULD BE CONTACTED FOR THE LATEST REVISION. QUESTO DISEGNO E' UN DOCUMENTO DI PRODOTTO. PER INFORMAZIONI IN RELAZIONE AMP INCORPORATED, E' SUGGERITO A PARLARE CON UN UTENTE IN UN REVISIONE DEL SERVIZIO CLIENTI. IL SERVIZIO TECNICO E' RESPONSABILE. | | DWN/DIS. 17NOV99 G. STELLA CHIAVANTI O. CANUTO APVD/APP. 17NOV99 A. GENTA | NAME NONE AMP Italia S.p.A. C.so F.lli Cervi 15 Collegno (TO) |
| DIMENSIONS: DIMENSIONI: (MM) | TOLERANCES UNLESS OTHERWISE SPECIFIED: TOLLERANZE, SE NON DIVERSAMENTE SPECIFICATE | PRODUCT SPEC. SPEC. DI PRODOTTO APPLICATION SPEC. SPEC. DI APPLICAZIONE | SIZE A3 CAGE CODE 00779 DRAWING NO. C=284360 NUMBER RESTRICTED TO |
| MATERIAL MATERIALE 3 | FINISH FINITURA 3 | WEIGHT PESO CUSTOMER DRAWING | SCALE 2:1 SHEET 1 OF 2 REV B |

THIS DRAWING IS UNPUBLISHED. RELEASED FOR PUBLICATION
 COPYRIGHT 19 BY AMP INCORPORATED. ALL RIGHTS RESERVED.

| LOC | | DIST | | REVISIONS | | | |
|-----|-----|---------------------------------|------|-----------|------|--|--|
| 9 | LTR | DESCRIPTION | DATE | DWN | APVD | | |
| | | VED1 FOGLIO 1/2 (SEE SHEET 1/2) | | | | | |

| P/N | RAPPRESENTAZIONE GRAFICA (GRAPHICAL REPRESENTATION) | COLORE (COLOUR) | CONNETTORE CRIMP (HOUSING CRIMP P/N) | COLORE CONN. (HSG.COLOUR) | CONTROPARTE (COUNTERPART) |
|----------|--|--------------------|--|------------------------------|--|
| 284360-1 | | NERO (BLACK) | 284134-1 | NERO (BLACK) | DIMA P/N 953466 (HEADER P/N 953466) |
| | | | 284134-3 | BLUE (BLUE) | |
| 284360-2 | | GRIGIO (GRAY) | 284134-2 | GRIGIO (GRAY) | DIMA P/N 953466 (HEADER P/N 953466) |
| | | | 284134-4 | MARRONE (BROWN) | |

| | | | | | | |
|--|--|--------------------------|--------|---|--------------------|------------------------|
| <small>THIS DRAWING IS A CONTROLLED DOCUMENT FOR AMP INCORPORATED. IT IS SUBJECT TO CHANGE AND THE CONTROLLING ENGINEERING ORGANIZATION SHOULD BE CONTACTED FOR THE LATEST REVISION.</small> | | DWN G. STELLA 19NOV99 | | AMP Italia S.p.A. C.so F.lli Cervi 15 Collegno (TO) | | |
| DIMENSIONS: mm | | CHK O. CANUTO 19NOV99 | | NAME FRAME 18 POSITION CRIMP/CRIMP 2.54 mm PITCH | | |
| | | APVD A. GENIA 19NOV99 | | SIZE A3 | CAGE CODE 00779 | DRAWING NO C-284360 |
| <small>TOLERANCES UNLESS OTHERWISE SPECIFIED:</small> 0 PLC ±0.3 1 PLC ±0.1 3 PLC ±0.05 4 PLC ± ANGLES ± | | PRODUCT SPEC - | | RESTRICTED TO | - | |
| MATERIAL | | APPLICATION SPEC - | WEIGHT | - | | |
| FINISH | | CUSTOMER DRAWING | | SCALE | 2:1 | |
| | | | | SHEET | 2 OF 2 | |
| | | | | REV | B | |